

*Sau*

ISSN 0734-4988

# Ancestors WEST



Volume 17, Number 2 June 1991

SANTA BARBARA COUNTY GENEALOGICAL SOCIETY

## TABLE OF CONTENTS

<i>President's Message</i>	41
<i>Approaching a New Century</i>	42
<i>First Christian Church of SB</i>	43
<i>Genealogy – The Adventure Begins</i>	46
<i>A Genealogical Trip of East Germany</i>	49
<i>North County News</i>	53
<i>Book Reviews</i>	54
<i>The de la Guerra Chart</i>	56
<i>The Dibblee Chart</i>	57
<i>The Seed Bed</i>	58
<i>Bible Records</i>	61
<i>New in the SBCGS Library</i>	63
<i>Addresses of Vital Statistic Offices</i>	65
<i>Questions and Answers</i>	67
<i>Computer Chips</i>	68
<i>1888 Santa Barbara City Directory</i>	69
<i>Surname Index</i>	77

# SANTA BARBARA COUNTY GENEALOGICAL SOCIETY

## PAST PRESIDENTS

**Location:** Goleta Valley Community Center  
5689 Hollister Avenue  
Goleta, California

**Mailing Address:** P.O. Box 1303, Santa Barbara, CA 93116-1303

Area code (805)

<b>Board of Directors- 1990</b>	Beatrice Mohr McGrath	<i>President</i>	967-8954
	Nadine Gauthier Heppell	<i>First Vice President Programs</i>	964-4994
	Al Hardy	<i>Second Vice President Membership</i>	736-9637
	Peggy Becker Miller	<i>Treasurer</i>	966-3278
	Arlene Langstaff Doty	<i>Recording Secretary</i>	968-1162
	Margery Hughes Ummel	<i>Corresponding Secretary</i>	687-6190
	Janice Gibson Cloud	<i>Parliamentarian</i>	965-7423
	Doris Batchelder Crawford	<i>Librarian</i>	962-3040
	Howard Menzel	<i>Director at Large</i>	967-6778
Michel Nellis	<i>Director at Large</i>	964-5030	
William Root	<i>Director at Large</i>	967-4288	

Forbes Roth 1972-73

Harry R. Glen 1974-75

Selma Bankhead West\* 1975-76

Carlton M. Smith 1977

**Purpose** Established in 1972, the Santa Barbara County Genealogical Society became incorporated as a non-profit organization in 1986. Its aim is to promote genealogy by providing assistance and educational opportunities for those who are interested in pursuing their family history.

Mary Ellen Galbraith 1978

**Membership Fees:**

Active (individual)	\$15	Donor	\$50
Family (husband & wife)	\$20	Patron	\$100
Friend	\$25		

Harry Titus 1979

**Meetings** Membership benefits include subscriptions to ANCESTORS WEST (quarterly), TREE TIPS (monthly newsletter), reduced rates for monthly bus trips to Los Angeles libraries, reduced prices for special events, and free queries in ANCESTORS WEST.

Bette Gorrell Kot 1980

**Publications** Regular monthly meetings are held on the second Saturday of each month except August. Meetings begin at 10:30 a.m. and are preceded by sessions for beginners starting at 9:30 a.m. Locations of meetings within the Center are subject to change, but are posted on the directory in the lobby.

Emily Perry Thies 1981

ANCESTORS WEST	<i>Editor,</i>		
	Virginia McGraw Paddock	969-5158	
	<i>Assistant Editor,</i>		
	Beatrice Mohr McGrath	967-8954	
	<i>Artwork and Design,</i>		
	Cheryl Fitzsimmons Jensen	969-4974	
	Valerie Kalupa	968-5405	
TREE TIPS	<i>Editor,</i>		
	Diane Stubblefield Sylvester	967-1742	

Harry Titus 1982

Norman E. Scofield 1983

ANCESTORS WEST is published quarterly in March, June, September and December. As available, current and back issues are \$3 plus mail cost. Library subscription to ANCESTORS WEST is \$10 per year.

Doreen Cook Dullea 1984

Articles of family history or historical nature are solicited and accepted as space permits. If materials are to be returned, include a self-addressed, stamped envelope. Copying for publication is by permission of SBCGS. Abstracting with credit is permitted. Our staff is voluntary and cannot check the accuracy of material submitted or accept responsibility of errors. The Editorial Committee reserves the right to edit copy submitted.

Janice Gibson Cloud 1985-86

Ken Mathewson 1987-88

\*Deceased

## President's Message



The big news this quarter is the appointment of Virginia Paddock as new editor of ANCESTORS WEST. Virginia has been so very helpful during my turn as editor and is the most logical member to assume this challenging, yet rewarding, responsibility. I am delighted that she accepted this post.

We have been fortunate, too, to have so much support from other members. Beginning in March 1989 with Doreen Dullea's account of Zev's search for his father, we have continued to welcome articles submitted by members. For example: Jayne Caldwell's item on a visit to Russia, December, 1989; J. J. Hollister's four-part story about his family and his history of the area, 1990; Marge Nefstead's "Graffiti and Genealogy", the tale of finding her great grandfather's name carved on a rock along the Oregon Trail, September 1990; Howard Menzel's interesting two-parter about his and Marie's visit to East Germany; Alma Lauritsen's account of her family reunion with relatives coming all the way from Germany, both in March 1991. In this issue, Virginia Scott begins a two-part review of her history of the First Christian Church of Santa Barbara, and in the September edition, we have a thought-provoking article on the Civil War by Richard Dunn.

This interest shown by our members makes the editor's task so much easier, and I encourage you to review your own histories for articles that would have appeal to other genealogists. To paraphrase a line used by a national corporation, "Participation is our most important product".

Beatrice Mohr McGrath

\* \* \* \* \*

### THE JOYS OF BEING AN EDITOR

Getting out this little paper is no picnic!  
If we print jokes, people say we are silly.  
If we don't, they say we are too serious.  
If we clip things from other sources, we  
are too lazy to write them ourselves.  
If we don't, we are too fond of our own stuff!  
If we don't print contributions, we don't  
appreciate true genius.  
If we do print them, the paper is full of junk.  
If we make a change in the other person's  
writing, we are too critical.  
If we don't, we are asleep.  
Now, likely as not, someone will say we  
swiped this from some other publication.  
We did!

[Taken from Heritage Quest #33, which was  
taken from Kinfolk & Connections, Alexander  
Co. NC Vol 8 #3, who copied from Wake Co.  
Gen. Soc. Vol. 9 #3, June, 1990]

With the help of Bea McGrath and  
the regular volunteer staff ANCESTORS  
WEST will continue to publish infor-  
mation of the Santa Barbara area,  
articles emphasizing methodology,  
instructions for the beginner, as  
well as for the experienced researcher.  
SBCGS members are encouraged to submit  
articles for publication.

Staff volunteers are: Patsy Brock,  
Julie Carr, Carlene Chagnon, Janice  
Cloud, Doris Crawford, Greeta & Al  
Hardy, Cheryl Jensen, Julie Johnston,  
Valerie Kalupa, Carol Kosai, Marilyn  
Owen, Helen Rydell

Virginia McGraw Paddock

## APPROACHING A NEW CENTURY

The following was taken from the February 1, 1991, issue of FAMILIES, the quarterly publication of the Ontario Genealogical Society.

Other genealogical magazines and newsletters in Canada and other countries are asked to please copy this article. Give this some thought and express your opinion. Write to:

Editor of Families  
Ontario Genealogical Society  
Suite 251  
40 Orchard View Blvd.  
Toronto, Ontario, M4R 1B9 Canada

The Editor will evaluate the suggestions and perhaps be able to announce a standard acceptable to all countries where genealogy is a popular hobby.

The question: HOW ARE WE GOING TO WRITE 3 FEBRUARY 2001? That date is only 10 years away, and if we do nothing, there will be some misunderstanding. Consider:

Those with computers will write 010203  
Our American friends will write 2/3/1  
LDS will call it 03FEB2001  
NATO may call it 03FEB01  
Our relatives will write Feb.3/01  
Legal documents may have: On the third day  
of February in the year two thousand and one.

Of all the arrangements, the LDS one seems most useful to the genealogist, for it can only be interpreted one way, and is reasonably short.

However, will it permit computers to record various items in chronological order? - And does FEB offend genealogists using other languages?

During the next decade, we should try to standardize this matter - at least for genealogists. What is needed is a method that is acceptable in all countries where genealogy is an active hobby.

Think it over, then compose a letter to the Editor of FAMILIES and mail it to the address above.

- Patrick Boulton

CENTENNIAL HISTORY OF THE FIRST CHRISTIAN CHURCH  
OF SANTA BARBARA

by

Virginia Pulliam Scott

PART I

The recently published Centennial History of the First Christian Church (Disciples of Christ) of Santa Barbara contains documented information regarding the founder, charter members and ministers of this church which was organized on 28 July 1888. At that time, Santa Barbara had two Catholic parishes and eight Protestant churches.

Rev. B.F. Coulter of Los Angeles arrived in Santa Barbara in July 1888 and arranged to conduct a revival in the brick church outbuilding on Gutierrez St. The Trinity Episcopal congregation had just moved to their new, second edifice constructed of redwood and located where the Santa Barbara Public Library now stands. The Episcopalians had not anticipated that about two decades later the tracks bringing the first train to Santa Barbara would be laid down the center of Gutierrez St.

Benjamin Franklin Coulter was born 9 August 1832 in Trenton, Kentucky. After completing his formal education, he was employed in a hardware store. At age 21 he confessed his faith in Christ and began studying to teach Bible classes. He married Isabella Moore on 6 May 1856. Following ordination, he continued working in stores to support himself and his family refusing payment for preaching.

By 1872, he moved his family to California and worked as a partner in a hardware business. His wife died 25 December 1875. On 22 October 1878, with the help of his three sons, he opened the first dry goods store in Los Angeles. On Sundays he began searching in the town (then less than 10,000) to find where he might teach or preach. He found Rev. John Hay preaching at the old courthouse to a little group who had been meeting there--or anywhere they could find--since 1876 "to break bread together". In 1880, with the help of his sister back East, he bought a lot and in two years they built the first Christian Church in Los Angeles. Later, when his store was financially successful, Rev. Coulter turned its management over to his sons which freed him to apply his efforts to other groups who wanted to build Christian (Disciples of Christ) churches. He helped build at least seven churches in Southern California. His managerial genius helped these new churches, but he left to each congregation the responsibilities of decision-making. No record of his financial contributions has been found. He believed in following the Scripture of not letting your "right hand know what your left hand does". Later, at his own expense, he built the Broadway Christian Church and was its minister, interspersing his evangelical work, for the rest of his life.

THE TWELVE CHARTER MEMBERS OF THE FIRST CHRISTIAN CHURCH

Booth, Robert Lane, b ca 1848 Michigan. Wife Maria J. d 12 Apr 1921, SB, CA. Son, Henley became the first City Attorney after the town received its American charter. By 1918, Henley had become a lawyer for the Southern Pacific Rr.

The Booth family came to Santa Barbara from Appleton City, MO. to assist Mrs.

Booth's elderly relative, Fielding Belt, who owned a hardware store. Mrs. Booth was the first church historian; Mr. Booth served as the first historian of this church.

Other relatives who later became affiliated with this church were: Rev. William Robinson Warren who served as minister from 1893 to 1896. He was born 24 March 1868 in Higginsville, MO, son of Rev. James and Anne Warren. Two brothers of Rev. William R. Warren were James and John, who were later members of this Santa Barbara congregation. James was a banker here for over 25 years. The Booths were buried in the Santa Barbara Cemetery.

Fern, Henry b Gloucestershire, England 6 August 1834, parents William and Lucy Reed Fern. Mar. Elizabeth Fewkes who was b ca 1838 in Nottingham, England. In 1871, when daughter Lizzie was 10 and son John was 8, the family emigrated from England and settled in Kansas City, MO, where daughter, Dora was born in 1873. They then moved to Yolo County, CA, where Henry was naturalized 8 April 1879. Other CA residences: Lake County and Pasadena. They were living in Santa Barbara by 1888, where he was a building contractor and manufactured bricks. On 16 July 1888, Lizzie, b ca 1861 in England, mar. John T. Peed, b 1859 in England, son of James and Mary Peed. We have no information about Kate Fern except that she was deceased by 1906.

Friel, Mrs. Minerva E. b December 1816 in TN. Widow of Jeremiah who died in 1881 and was buried in Santa Barbara when 65 years old. Minerva lived with her daughter, Annie, and son-in-law, Robert J. Broughton, b Ireland 19 September 1847. He was sheriff of Santa Barbara County. There were two sons. Charlie Friel was buried in Santa Barbara Cemetery 30 August 1883. The other son is reported to have lived in Yolo County, CA. Minerva was buried in the family lot 7 July 1905.

Hamer, Joseph Clark b 1825 in Massachusetts. He and his wife, Mary F. Tillford b ca 1843 in Arkansas, were charter members of this congregation. In 1869, Mr. Hamer was elected County Superintendent of Santa Barbara Schools. At that time, this county included what is now Ventura County. The census of 1870 listed Mary F. Hamer's occupation as "keeps house"; however, in 1871, she opened a millinery shop on State Street. Supt. Hamer kept his position until 1875. In 1880, Mr. Hamer was serving as a City Councilman and his brother-in-law, G.D. Tillford lived in their household. By 1884, Mr. Hamer's occupation was listed in a directory as "orchardist".

In 1891, Joseph Clark Hamer was serving as an elder in this church. Rev. Burris Adkins Jenkins arrived with his mother from Kansas City, MO. to begin his first ministry as a Disciples preacher. The congregation was still renting the brick church built by the Episcopalians on Gutierrez St. However, in 1887 the Southern Pacific Rr. had built their tracks right down the center of this street only a few feet from the front of the edifice.

Elder Hamer tried to change the way the young preacher believed and conducted the services until Rev. Jenkins resigned having lost his own faith and health. Upon recovery, Rev. Jenkins later became nationally known for his ministeries in Kansas City, MO. and other activities.

We are told by historian, Isabelle Macfarlane, who was present in this congre-

gation that the next minister called to the Santa Barbara church, Rev. Mahlon H. White, "was thrown into nervous prostration by the old elder and remained less than a year".

During 1893, when a wide-spread economic depression started, Rev. William R. Warren arrived as their next minister. Elder Hamer also disapproved of Rev. Warren Isabelle Macfarlane reported, "...One of the first things Mr. Warren did was to organize a Christian Endeavor Society and his brother, James M. Warren became its president. Missionary offerings were taken in the church over Elder Hamer's protest. He resigned as Elder and stayed away from the church. At the end of three months, he returned saying "Brethren, I can't live without the church". From that time, his attitude changed and he lived several years in his beloved church. Years later, Rev. Warren told Rev. Jenkins that Elder Hamer expressed regret at what he had done to Burris Jenkins.

Musselman, Miss Armilda "Milda" may have come from Indiana or Texas where she had relatives she mentioned in her will. She was a nurse in Santa Barbara when the church was organized and had a strong interest in missionary work. She donated a lot on Micheltorena St. to the Christian Women's Board of Missions at Indianapolis. She was buried in the Santa Barbara Cemetery 21 January 1921.

Peer, E.D., was the wife of John D. Peer, a carpenter of Santa Barbara. There was no other Peer family listed in the City Directory of Santa Barbara 1895-6. The church calendar of 30 October 1898 reported that Mr. Peer had traded their home here for one in Corvallis, Oregon. Another item dated 3 June 1899 stated Mrs. Peer had moved to 984 Central Ave., Joplin, MO. In 1906, the church historian reported the death of Mrs. E.D. Peer.

Show, Eliza J. (Harvey) was born in Tennessee 6 February 1821. In the 1850s, she accompanied her husband, Major Daniel Show over the Oregon Trail to the Washington Territory. Their son, Walter C., was born at Douglas Island, WA, in 1853. Soon after, they moved to Petaluma, CA, where their daughter, Ella, was born. About 1863, they moved to a ranch at the west end of Micheltorena St., Santa Barbara. Daniel Show d at age 75. By 1886, Ella was married to Walter Hunt. Walter Hunt and Walter C. Show formed a partnership grocery and feed store which became an outstanding commercial establishment in Santa Barbara.

To be continued.

\* \* \* \* \*

GENEALOGY - THE ADVENTURE BEGINS by Carol Kosai  
begins on page 46. This is the first of a series  
for those beginning family research.

\* \* \* \* \*

## GENEALOGY - THE ADVENTURE BEGINS

By Carol Kosai

It is not too important how you got infected. Once you have the genealogy virus you have it for life. Most beginners suspect they might easily get entrapped in this remarkable pastime, but they don't know how to go about it, or just what is involved.

What is genealogy anyway? Genealogy is the study of family lines, including the descent of a person from his ancestry. It is an ancient and important study. One fine example of a family tree is in the Bible, where generations of begats rhythmically come down the centuries.

Genealogy used to be the province of the rich, leisured and scholarly for tracing the lines of kings. Today the emphasis has shifted from the descent of kings to the descent of Every Man. Boy Scouts earn a merit badge in genealogy, while teachers use it as a meaningful way to approach history. In fact, many colleges and universities are involved in the "Anonymous Families History Project," which is to preserve the history of ordinary settlers. As Shakespeare said, "There is a history in all men's lives."

As a hobby genealogy makes good sense for yourself or your whole family. It can be your legacy to future generations or a reflection of family pride, ethnic heritage or one's religion. Genealogy is a gigantic combination puzzle/mystery where the solution includes 1024 parents over ten generations. It can lead you to history, sociology, law, eugenics, geography, psychology and on to membership in a local historical or patriotic society.

Your genealogy is not just history. It is also part of your identity. It is a root in a changing, ever more mobile society. It is a unique and personal inheritance that will not be reduced to a series of numbers in a computer. Each search is individual as no families are exactly alike, though they may have common ancestry. So genealogical research, pursued for many different reasons, in many different ways, is an intensely personal experience.

Doing your own family history is easier now than ever before. Special thanks for this go to the Church of Jesus Christ of the Latter-day Saints. Their family history libraries in communities all over this country, give us access to the premier collection of genealogical materials they have collected from all over the world. The LDS Main Library is in Salt Lake City, Utah, but its information is available to us on microfilm, microfiche and computer.

As interest in genealogy has grown, so has the number of supporting magazines, books, courses, societies, etc. The US Government holds valuable records for the searcher. Computer software for genealogy abounds. It is an exciting time to find your family history.



How far back you can trace your family depends on many factors. Many can easily go back three or five generations in this country to immigrant ancestors. If this is all you can do, don't feel you have failed. You'll probably have some ideas about why you can't go back further. Record these speculations. In time you can approach the material with a fresh eye. In any case, you have set the foundation for someone to use a hundred years from now. You will be one of those whom Edmund Burke commended with his remark, "People will not look forward to posterity who never look backward to their ancestors."

Anyone with curiosity and persistence can trace a family line. No one is barred from the search for lack of credentials, because it is a personal search. A good genealogist will have several of the traits summarized by Ethel Williams, author of *Know Your Ancestors*. After a detective she lists, "...a thorough historian, an inveterate snoop, and at the same time a confirmed diplomat, a keen observer, a hardened skeptic, an apt biographer, a qualified linguist, a part-time lawyer combined with quite a lot of district attorney, a studious sociologist, and - above all, an accurate reporter."

This is a comprehensive job description! Can any ordinary person manage all of this? Like anyone else, a genealogist started with the basics. It's easy to begin. Simply write down what you know, what you've heard, family anecdotes, everything you remember about your family. Start with yourself. Where and when were you born? Who are your parents? Where are they from?

Ask relatives what they remember. Once you know who the oldest family member is, interview that person extensively. We will discuss interviewing in a future article. More than one genealogist regrets not asking that eldest family member about the family before he/she died.

Take good notes from the beginning. List your source so you'll know who to go back to when questions come up. When you're talking to people about the family, try to locate a family bible. Traditionally genealogical data is often recorded there. Check for family diaries, journals, letters, legal papers, newspaper clippings and photographs.

To keep this information in some order, you'll want to make up a working lineage or pedigree chart and family information charts or family group sheets. The pedigree chart is a good way of lining up ancestors for an overview. The family group sheets summarize information for a specific family. Additional notes can be attached to the family group sheet or chart.

Published pedigree chart forms and family group sheets are available. Our society has some for sale in the library. Examples of a pedigree chart and a family group sheet can be found in any basic genealogy book, such as *Ancestry's Guide to Research*. This book is also available for sale at our society library.

Use these standard rules when filling out charts and sheets to keep the information in a consistent format:

\*Record each person's full name. You may include nicknames. You may capitalize the surname.

\*Record the day, the month, the year, so an entry will read 29 Aug. 1944.

\*Record from the smallest geographical area to the largest, i.e., city, county, state (use the two letter Postal Service abbreviations). Examples would be Spokane, Spokane Co, WA, or Hikone, Shiga Ken, Japan.

\*Information which is in doubt should be followed by a question mark in parenthesis.

\*If only an initial is known, place it in quotation marks.

\*You may want to underline unusual names, to show that you know they are unusual and are not a mistake on your part.

\*In family group sheets place an X by your ancestor's name.

In filling out a pedigree chart, start with yourself on the far left side of the paper. List your parents beside your name, your grandparents beside your parents and so on until you run out of room. Take one of the names where you ran out of space and make that person the first on a new page. Continue on for as many charts as necessary for the information you have. It helps to identify the chart with a sequence number and family name.

Begin a family group sheet with the name of the person you are researching at the top of the page. Use the parents full names including the wife's maiden name. You can also add nicknames and any known spelling variations. Next list birth information for this individual, including day, month, year, city, county, state (or foreign equivalent). Add marriage date and place and full name of spouse. List date and place of death and burial, or residence if still living. Children should be listed in order of birth. Again you will want to record date and place of birth and death, when married, where and to whom for each child. Leave spaces blank where you do not have the information.

For multiple marriages make separate sheets on each spouse and offspring. List spousal information first, including date and place of birth and death, other marriages for the spouse, and parents names. Follow with information on any children born to this marriage.

You'll want more information than the bare facts listed above, so add personal facts like occupation, military service, community service, religion and the anecdotes that show your ancestors were flesh and blood, not dull statistics.

So, the great adventure begins at home, with the information at hand put into two summary charts, the pedigree chart and the family group sheet. These forms are your personal road maps. You can see what you have and what you need to discover. This is just the start. There is much more to come.

## A GENEALOGICAL TRIP TO EAST GERMANY

July 9 - 13, 1990

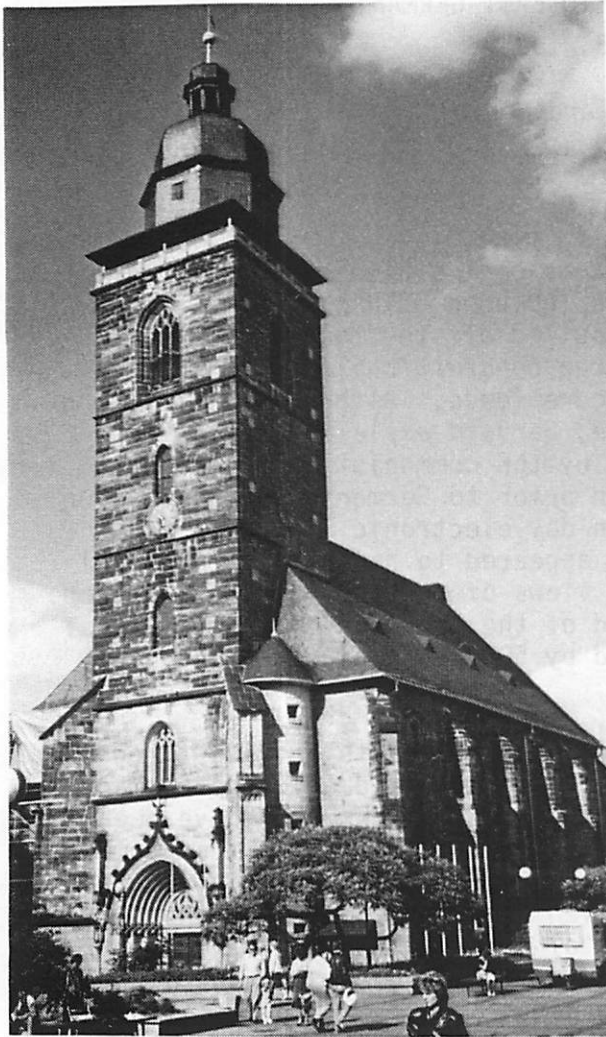
by: Maria & Howard Menzel

### Part II

On our return to GOTH A, the road took us over a high hill commanding views of the surrounding region which included GOTH A, MOLSCHLEBEN and other small villages and towns. We pulled off the road and Gerhard pointed out what appeared to be a large concrete building bristling with antennas and surrounded by a secure fence. Although the building did not seem to be in use at the time, Gerhard explained that it had been the eavesdropping facility used by the communist authorities to tap all telephone calls in the region prior to Germany's reunification. Just across the road from this modern day electronic listening post was the crumbling stone ruin of what appeared to have been a medieval watch tower whose similar commanding views of the surrounding landscape had in earlier times, perhaps, warned of the approach of enemy forces. The ancient and the modern, separated by 500 years of technology and only 100 yards of distance!

The following day, our third in GOTH A, was devoted to a drive through the rural countryside. GOTH A is located in what today is the German state of THURINGEN, one of the five new German states that have been formed by consolidating the former 14 districts (counties) that comprised East Germany. "THURINGIA" appears as a separate and distinct geographical area on maps of middle aged Europe, even before the names Saxony or Germany appeared. ERFURT is the capitol city of THURINGEN and GOTH A, one of the principle cities. With its rolling countryside and dense forests, THURINGEN is known as "the green heart of Germany". It's highest point, Mt. Insel, is 916 meters high and a walk through the forest to the top of "Inselberg" is a popular pastime for locals and tourists. Gerhard parked the Wartburg and we took a commuter bus to the summit to save time and energy. Here, also, was a phalanx of communication equipment in the form of antennas and "dishes". Views of the surrounding countryside were obscured by haze so we had to be content with visiting the souvenir shop and eating hot dogs that protruded from both ends of a delicious bun and drinking beer. The Germans, we found out, do know how to prepare and enjoy their delicious food and drink. We found little similarity between American beer, with its carbonization and pasturization, and the wonderful German variety.

Some of our impressions of GOTH A: It appears not to have changed significantly since the middle ages, particularly in the old part of town. There is, however, a modern suburban area. Overlooking the city from a high point on the north side of the old town is the huge



St. Margaret's Church, Gotha, East Germany. Howard Menzel's great grandparents baptised here in 1816.

friendly and helpful and at times we got the distinct impression that we were the first Americans many of them had seen. We guessed that we were something of an oddity.

In Guttenberg Strasse, a downtown side street, we saw building walls consisting of half timbers filled in with exposed bricks and stones, displaying construction techniques hundreds of years old. We had seen the same thing in MOLSCHLEBEN but instead of brick or stones forming the walls between half timbers, there had been "wattle" or interwoven tree branches which formed the foundation for mud or mortar to complete the wall.

Schloss (castle) Friedenstien, ancestral palace of the reigning monarch who ruled over the area several hundred years ago. Today it houses museums and libraries, a church and miscellaneous offices. Sights of scaffolding around one of the towers and sounds of workmen inside attest to vigorous renovation work underway.

Daily open markets in the plazas adjacent to city hall and the churches offer farm produce, clothing, household items and whatever. Sieglinde said she shopped the produce stalls daily for fresh items. We observed Russian soldiers in groups of three shopping or just looking. Howard approached them on two occasions in a friendly manner but was brusquely waved off. The occupying Russian military contingent was housed in concrete - obviously not originally designed for temporary use - barracks at the edge of town.

Children appeared happy, well clothed and well fed and toddlers especially are decked out in colorful finery by proud parents. Store shelves are somewhat barren of items for sale and, although choices were few, people did not appear to be unhappy. They were

In GOTHA, a goodly amount of renovation was underway and most of the downtown buildings were newly repaired and painted. Someone told us that GOTHA was one of the nicest appearing towns they had seen on a visit to East Germany. We predict that it will be discovered soon and become a popular tourist stop. We noted a load of the polluting "brown coal" briquets offloaded on the sidewalk by a store building and recalled that this principal energy source of East Germany had been blamed for the heavy pollution there. However, pollution was not very noticeable in GOTHA and perhaps this was because industry - an automobile factory - was operating at reduced production.

A word about Gerhard and Sieglinde Menzel: They were one of the few families with a telephone and then only because Gerhard kept the office phone for his former costume jewelry factory at their home. The Communists had expropriated his factory, employing him as a worker but allowing him to retain the phone. At about 60 years of age, he has heart trouble and planned to retire in 1991. Sieglinde works but we do not know where. She is younger than her husband, laughs easily and tolerates his heavy smoking and wild driving. They live in the upper story of a two story flat and rent out the bottom story. They have a very nice vegetable, fruit and flower garden in the backyard where his former factory was located. They derive much enjoyment from their garden. They appear better off economically than many in their age group and, although life under communism treated them harshly, they retain a positive outlook.

And, a word about our interpreter, the young schoolteacher, Regine Franke. She is a charming mother of two: 14 year old daughter, Romy, and 10 year old son, Andre. Her husband, Peter, operates a computer in the local automobile assembly plant. Regine is a devoted teacher and when we asked her what she would most like from America, she replied: "Books that will show my English students what life in America is like." We have plenty of information about life in Russia and, having made several trips there, I can explain that to them but, we have nothing about America." [NOTE: After returning home we mailed Regine several of our own books together with some obtained at a used book store. We asked Congressman Robert Lagomarsino for assistance, pointing out that here was a wonderful public relations opportunity for America. He promptly responded and it was not long before Regine got some material from the American Embassy in West Berlin.]

On our last night in GOTHA Regine invited us to visit their apartment. She picked us up in their small, but newer model, auto and drove to a recently completed apartment complex at the edge of town. Regine, Peter and their two children live in a very nice and comfortable prefabricated second floor unit of the modular apartment complex. Though the rooms are small, they are very nicely furnished, with each of the children having their own room.

Their son, Andre, has a model electric train layout suspended from pulleys above the floor of his room. The children have their own computer. We concluded that both parents earn substantial salaries, although their future economic outlook was bleak in the face of substantial future factory closures and unemployment following reunification. Peter faced certain unemployment because the automobile factory was slated to be closed but Regine's teaching job appeared to be secure. Because both Peter and Regine are young, intelligent and ambitious, as well as in fields for which the demand should be high, their future economic outlook does not appear to be as grim as that of over two million residents, of what was East Germany, who are currently unemployed - out of a population of about 16 million! Hence, for the majority of those citizens, the future is fraught with uncertainty and anxiety. Privatization of the former state run enterprises is proceeding slowly and it is expected to be several years before current economic hardships are overcome. Meanwhile, despite unemployment, higher taxes and inflation, there is one overriding ingredient and that is hope. Hope for a future free from the shackles of communism and where, once more, there will exist opportunities for individual initiative and growth.

On our last morning in GOTHHA, Gerhard and Sieglende took us to the railroad station for the return trip to Frankfurt. Meeting us at the station, Regine presented us with a miniature German electric model train switch-engine like the one that Howard had admired on her son's model train layout. It was a sad moment, parting from our warm newfound friends whose future was so uncertain, but we promised to keep in touch and, God willing, return at some future date.

Today hanging on our dining room wall is a beautiful framed poster of GOTHHA viewed from Schloss Friedenstein on its high point overlooking the town. We would like to return perhaps in a few years or, hopefully, after a living relative whom we might visit is discovered. In retrospect, there were times during our visit to East Germany when we thought our timing was terrible because so many things were in turmoil, but we finally convinced ourselves that we had chosen an exciting time to be there - in the midst of a peaceful revolution taking place all around us.

[CORRECTION: Vol. 17, #1, page 7: The first part of Maria & Howard Menzel's trip, it was stated that the date of baptism was 26 May 1840, whereas it should read "1850".]

\* \* \* \* \*

RESOLVE to be tender with the young, compassionate with the aged, sympathetic with the striving and tolerant of the weak and the wrong. Sometime in life you will have been all of these.

\* \* \* \* \*

# North County News

Greeta & Al Hardy

PART I



The following article is based on a presentation by Beth Christman of Guadalupe to the Vandenberg Genealogical Society, Lompoc, California. There are additional comments by your columnists.

Today about nine miles west of Santa Maria lies the City of Guadalupe at the intersection of Main Street (originates East of Santa Maria and extends to the Pacific Ocean at the Guadalupe Dunes Beach Park, where the Santa Maria River empties into the ocean) and Highway 1.

We are getting ahead of ourselves. Let's go back in time to 21 March 1840 when the Mexican Government granted 30,000 acres to Olivera and Teodoro Arellanes. And so, Guadalupe Rancho was born.

It wasn't until 12 May 1857 that the District Court got around to confirming the grant. It was 1 March 1870, thirty years after the grant was made, that a patent was issued. Two years later, in 1872, John Dunbar was named postmaster and Guadalupe became a fact. The post office occupied part of Dunbar's store.

From this small start it didn't take long for Guadalupe to grow to 100 homes, six stores, one fruit store, two hotels, five saloons, two livery stables, a blacksmith shop, a Wells Fargo Express Company Office and a post office.

A Frenchman by the name of Leroy came to Guadalupe with his family in the early 1870s. He had previously sold mining equipment to miners and established a dry goods store in Sacramento and other cities. Being an agent for a chain of French banks, he was able to provide loans to the ranch owners when they ran into financial difficulties. When the loans were defaulted, the Leroy interests were able to acquire the land. Eventually the Leroy's sold off the California interest, except for those in the Guadalupe area. They helped lay out the town of Guadalupe and established Leroy Park. The park is still there today.

The growth of Guadalupe in 1874 saw the establishment of the First Methodist Church; the Guadalupe Telegraph (a newspaper); the Odd Fellows Lodge (the first in northern Santa Barbara County); and the Masonic Lodge.

The Guadalupe Cemetery was platted by James T. Stratton in November 1871. It had been part of the original Rancho Guadalupe. On 29 November 1880 it was deeded to the Leroy interests. Although there is no record of the first burial, there are markers dating from 1875. The first people to be buried here were from the Swiss and Portuguese families of Guadalupe. The original people of Guadalupe were Swiss-Italian dairymen from the Ticino area of Switzerland.

The cemetery was deeded to the Guadalupe Cemetery Association on 2 February 1920. First Trustees were: J. D. Waller, J. H. Franklin and H. L. Anderson, with F. Abernathy as secretary.

To be continued.....



RANCHO SAN JULIAN: The story of a California Rancho and its people by A. Dibblee Poett, 233 pages. Hardbound, 6½ x 9. Illustrated. Santa Barbara Historical Society. (Available at the gift shop of the Society, 136 E. De la Guerra Street, Santa Barbara). \$19.00

Mr. Poett, known as Dibbs, is a fifth-generation Santa Barbaran and a descendent of the de la Guerra, Dibblee and Poett families. From a vast collection of family papers, letters and documents, Dibbs has researched and written an endearing account of his families and the land on which they lived. Indeed, the story of the Rancho is almost another genealogy with its growth and loss of member parts described in a parallel history with that of the family.

One of Dibbs' immigrant ancestors was Capitan José Antonio de la Guerra y Noriega who first saw the area of what would become the Rancho. In 1815 he persuaded the governor to declare the area a royal rancho to serve the Presidio of Santa Barbara and in 1836 the land was granted to him by Governor Alvarado. The history of the ranch continues through the partnership of Dibblee-Hollister to the present owners, descendents of the Capitan. Most of the famous names of California are involved at some time with the ranch.

As a genealogist, Dibbs was familiar with many stories and family heirlooms. In 1972 Dibbs and his sister went to Spain to visit their roots and to find the birthplace of Don José in the village of Novales near Oreña. They met cousins who had thought the new world branch of the family had virtually disappeared. Dibbs recited the family motto for them as they brought out the family escutcheons.

Dibbs' family research took him to London where he found the names of Dibblee ancestors in the Great Register listed as emigrants to America in 1635. Dibbs' grandfather, Alfred Poett was born in Chile of British parents. Eventually, this worldwide ancestry converged, through various means, to Rancho San Julian. (An ancestor chart follows the review).

Many vignettes of the ancestors are included in the history and they add warmth and charm to the book. My favorite is one concerning Dibbs' father. Fred Poett was not a big man. While he



courted his future wife, he had a rival in an Italian count who was large and imposing. Poett challenged the man to a horse race running from near Stearns Wharf to what is now Pershing Park. Poett saw he was "leading by about eight lengths...Crossing the finish line he quickly reined in his horse and vaulted to the ground to greet his rival. At this, the other suitor's horse came to an abrupt halt, throwing its rider to the ground in a most unceremonious manner." The Italian count disappeared from the scene.

Many beautiful old family portraits have been carefully restored and reprinted in the book. There are also numerous maps and pictures of the Rancho itself.

Dibbs has lived on the Rancho most of his life. He knows all its parts and histories as well as he knows the personalities and adventures of members of his families. All their stories have been faithfully recounted in this lovely book.

Submitted by Patsy L. Brock

oooo0oooo

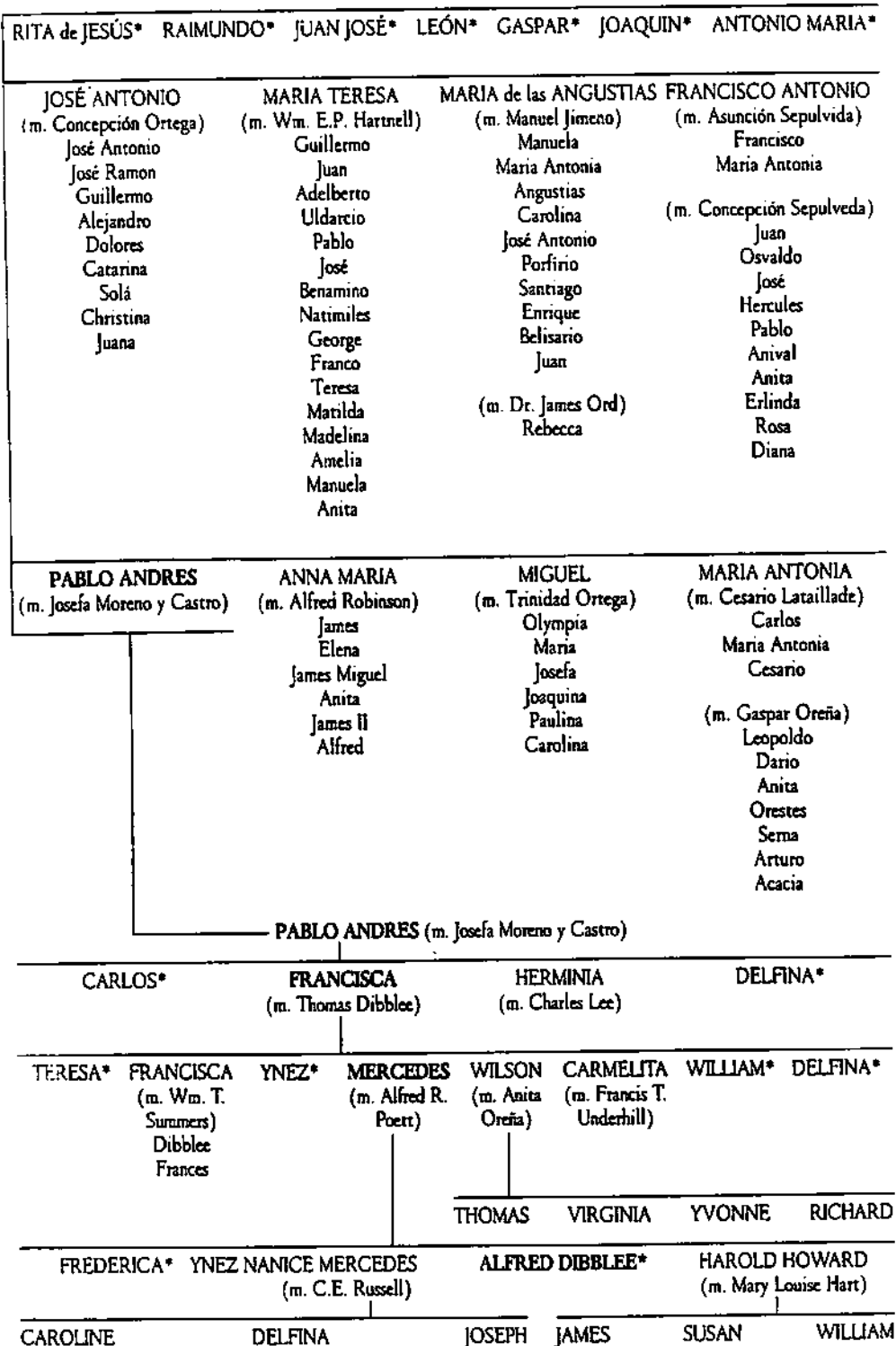
#### 1790 CALIFORNIA CENSUS

The earliest "padrons", or census, for California was 1790. The census taken that year in the eastern part of the United States records only the name of the head of the family, the number of members in the household and the various age groups. California was not a state in 1790, but its census includes additional information. It listed the man's name, lists him "soltero" (single) or "casado" (married), his age, where he was from, his occupation, his wife's maiden name (if he was married), her age and where she was from, the names of their children and their ages.

Additional information given was: Espanol, mestizo, coyote, mulato, etc. This designation was often considered race, or caste, designation. Upon more careful examination, it has been found that the various terms changed in meaning. Where one may have been called "mulato" in one record, another record may give "coyote". In a later record the designation may be "Espanol". These terms may have been used as color description, or the individual may have changed his caste purposely as his status in society changed. Be alert to variations in spelling of names.

# The de la Guerra Family

JOSÉ ANTONIO JULIAN DE LA GUERRA (m. Maria Antonia Juliana Carrillo)



\* unmarried

# The Dibblee Family

ROBERT DIBBLEE

THOMAS DIBBLEE

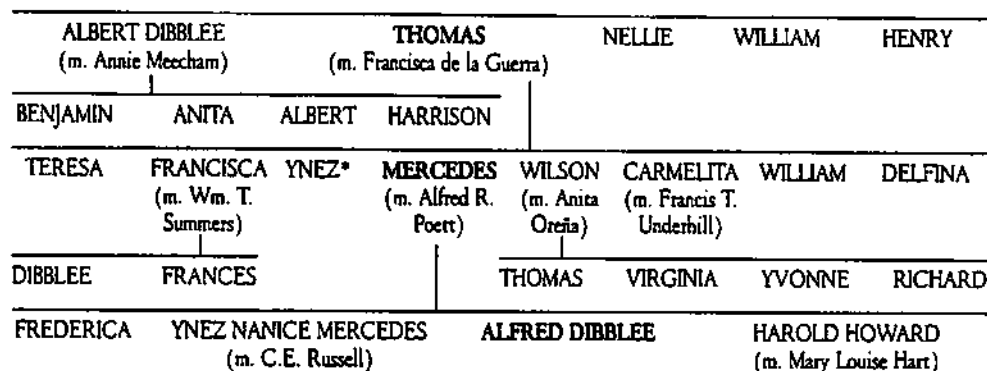
EBENEZER DIBBLEE (m. Mary Wakefield)

WAKEFIELD DIBBLEE (m. Jane Fyler)

EBENEZER DIBBLEE

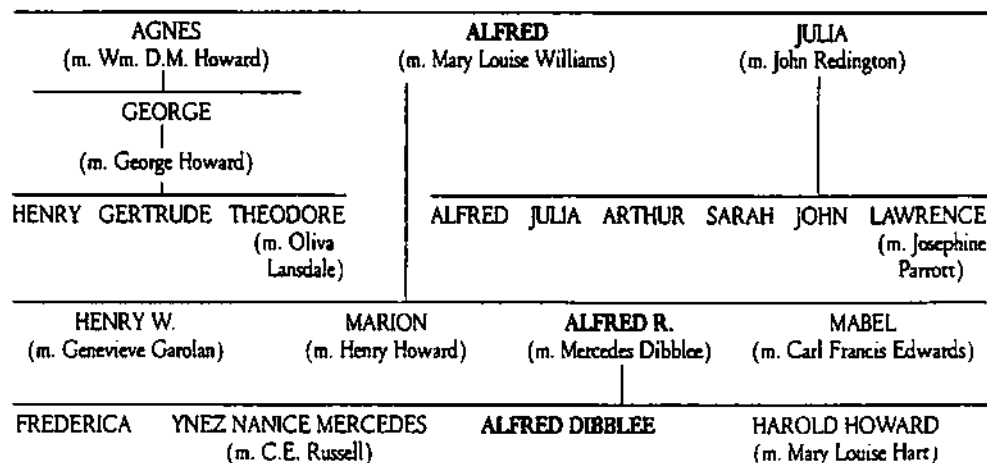
EBENEZER DIBBLEE Jr. (m. Mary Hardy)

FYLER DIBBLEE (m. Frances Wilson)



# The Poett Family

DR. JOSEPH HENRY POETT (m. Sarah Susanna Wood)



[Permission to print ancestor charts granted by  
A. Dibblee Poett, author of RANCHO SAN JULIAN.]

*The Seed Bed*  
*A Column of Local Sources*  
Marilyn Owen

Researching at the National Archives--Pacific Southwest Division

This branch of the National Archives (formerly known as Laguna Niguel) is within driving distance of Santa Barbara (about three hours). The Archives contains more than 16,000 cubic feet of paper records, and about 50,000 rolls of microfilm.

The records on microfilm are of general interest to family researchers, as they are made up, in a large part, of all the Federal censuses from 1790 through 1910. Also on microfilm are the Revolutionary War Pension Applications and Military Service Indexes; Union and Confederate Military Service Indexes and Diplomatic Despatches from our Embassies and Consulates, around the world.

Some Microfilmed Court Records of General Geographic Interest:

The Revolutionary War Prize Cases: Records of the Court of Appeals in Cases of Capture, 1776-1787. M162. 15 rolls  
Minutes of the Supreme Court of the United States, 1790-1950. M215. 41 rolls.  
Appellate Case Files of the Supreme Court of the United States, 1792-1831. M21. 96 rolls  
Index to Appellate Case Files of the Supreme Court of the United States, 1792-1909. M408. 20 rolls.

Some Microfilm Records of Regional Interest:

Naturalization Records of the U.S. District Court for the Southern District of California, Central Division (Los Angeles), 1887-1940 M1524 244 rolls  
Naturalization Index Cards of the U.S. District Court of the Southern District of California, Central Division (Los Angeles) 1915-1976. M1525  
California Private Land Claims Dockets. T-910. 118 rolls.  
Index to Private Land Grant Cases-U.S. District Court, Northern District, 1853-1903. T121. 1 roll.  
Index to Private Land Grant Cases U.S. District Court, Southern District. T-1215. 1 roll.  
Index by County to Private Land Grant Cases-U.S. District Court, Northern and Southern District of California. T1216. 1 roll.  
Declarations of Intentions, San Diego County [County Superior Court], 1871-1951. 9L-RA-1. 8 rolls.

THE SEED BED  
Pacific Southwest National Archives, cont.

Other Naturalization Records are found among the paper records. Some of them are:

California Southern District, Central Division Court

LOS ANGELES

Index to Naturalization Records 1887-1931  
Naturalization Index Cards, 1915-1976  
Declarations of Intention, 1887-1966  
Petitions for Naturalization, 1887-1960  
Military Petitions for Naturalizations, 1918-1946  
Records Relating to Repatriations, 1936-1952  
Petitions for Military Repatriations, 1922-1946  
Overseas Military Petitions, 1942-1954  
Naturalization Depositions, 1925-1961  
Naturalization Depositions for Military Petitions,  
1933-1948  
Naturalization Cases, 1916-1957  
Memoranda of Naturalization Cases, 1944-1950  
Lists of Alien Naturalization Notices 1942-1951

County Superior Courts

LOS ANGELES COUNTY

Naturalization Index, 1852-1915  
Naturalization Records, 1851-1888  
Certificates of Citizenship, 1876-1906  
Declarations of Intentions, 1887-1915  
Petitions for Naturalizations, 1907-1915

SAN DIEGO COUNTY

Index to Declarations of Intention, 1853-1955  
Declaratons of Intention, 1941-1955  
Index to Citizens Naturalized, 1853-1956  
Naturalization Index Cards, 1919-1956  
Certificates of Citizenship, 1883-1903  
Naturalization Record Books, 1903-1906  
Petitions of Naturalization, 1906-1956  
Military Petitions for Naturalization, 1918-1919  
Court Orders on Naturalization Petitions, 1929-1958  
Court Orders Transferring Petitions for  
Naturalizations, 1953-1955  
Court Orders on Repatriation Petitions, 1936-1955

Arizona Territorial and State Records make up part of the holdings of the Pacific Southwest Regional Archives. Some of the Arizona Naturalization Records found here are:

THE SEED BED  
Pacific Southwest National Archives, cont.

Arizona Territorial Courts

Records of Naturalization, 1882-1912  
Declarations of Intention, 1864-1912  
Certificates of Naturalization, 1907-1912  
Index to Naturalization Records of Pima County,  
1864-1911  
Index to Naturalization Records of Yavapai County,  
1865-1906  
Records of the Clerk Relating to Naturalization,  
1903-1911

Arizona District Courts

TUCSON DIVISION

Declarations of Intention, 1915-1966  
Naturalization Petitions, 1915-1965  
Military Naturalization Petitions, 1918-1946  
Naturalization Petitions Transferred, 1953-1966  
Naturalization Orders Granted & Denied, 1929-1965  
Naturalization Certificates, 1915-1926  
Naturalization Petitions, Superior Court,  
Pima County, 1912-1914

There are all kinds of additional Arizona Court Records, found at the Pacific Southwest National Archives, including:

Arizona Territorial Supreme Court

Transcripts of Testimonies, 1873-1876  
Miscellaneous Records, 1895-1900

The National Archives-Pacific Southwest Region, is located at 24000 Avila Road, Laguna Niguel, California. (714) 643-4241. Take I-5 going South of Santa Ana, ten miles or so past Leisure World, to La Paz off ramp. Turn right (going South) & proceed about two miles until you cross Avila. The address of the Archives is actually on Avilia, but you must continue going South to the next street, which is Allegra & turn right. Follow Allegra until you come to the foot of the Archives and park in the lot on the right.

The hours are Monday through Friday, 8.00 a.m. to 4:30 p.m. Until recently the Archives was also open on the first Saturday of the month (microfilm research only) from 8:00 a.m. to 4:30 p.m., but the government has discontinued this opening on a trial basis. They may soon decide again to go back to the first Saturday openings, so if you're interested, you might phone and see what the present policy is.

THE  
NEW TESTAMENT  
OF OUR  
LORD AND SAVIOUR JESUS CHRIST  
TRANSLATED OUT OF THE ORIGINAL GREEK

This bible is in the possession of  
Rosemary Glennen Behrens of Greensboro,  
NC, who is first cousin to Beatrice  
Mohr McGrath. The date of the bible  
is no longer available.

BIRTHS:

William Willett Bancker Was Born Jan 7th, 1849  
Charles Wesley Bancker Was Born Jan 3rd, 1851  
Hiram L. Bancker was born May 16th 1854  
Ida Minerva Banker Born Dec 27th 1860. New York City  
Mary Frances Maloney at Whiteport Ulster Co. March 17th 1857  
Beatrice Irene Bancker at New York Nov 24, 1888  
Maisie Ann Bancker at New York May 5, 1891  
John Willett Bancker at New York Aug 2, 1892

BAPTISMS:

William Willett Bancker Was Baptised July 1849

MARRIAGES:

William Willett Bancker to Mary Ann Cannon at Pittsburgh P.A.  
December 21st 1847, by Rev. William Coa  
Charles Wesley Bancker to Mary Frances Maloney at Whiteport Ulster Co  
Sept. 25th 1887 NY, by Rev. J. J. Gleason  
Beatrice Irene Bancker to Thomas P. Glennen at N. Y. City  
Oct. 11, 1915 at St. Thomas Apostle, 118th St. & Nicholas Ave.

Children:

Rosemary Beatrice born Oct 7, 1917, N.Y.City  
Thomas P. Jr. born Aug 17, 1920  
Irene Beatrice born May 16, 1926 (Died Nov 5, 1943)

Rosemary Beatrice Glennen to John R. Behrens June 1, 1940  
at St. Mary Gate of Heaven, Ozone Park

Children:

Rosemary Ann Sept 7, 1942, Ozone Park  
Irene Beatrice June 3, 1945, Ozone Park  
Patricia Ann, July 15, 1949, Ozone Park  
Barbara Jean, Apr 5, 1955, Baldwin, NY

Thomas P. Jr. Married Margaret A. Hegerich, April 13, 1947

## DEATHS:

William Willett Bancker Departed this Life July 8th 1852

Aged 3 years, 6 months, 3 days

Hiram L. Bancker departed this Life Sep 30th 1855.

In Memory of Mary Ann Bancker. Departed to a Brighter Sphere June 20th 1855

Aged 29 years

Addie O. Bancker, Wife of W. W. Bancker Departed from Earth Aug 16th 1864.

Aged 27 years, 7 months, 4 days, Covington, KY

Abram. V. Bancker Departed this life November 21th 1869 Aged 65 years

In Memory of Elisabeth Bancker Died on the 1st day of March 1875.

Wife of A. V. Bancker. His son will ever keep her grave green while he lives. (s) W.W.Bancker



### GEORGIA STATE ARCHIVES HALTS MAIL REFERENCE SERVICE

The Georgia Department of Archives and History's staff ceased responding to mail inquiries effective January 1, 1991, for research from the public. This was due to current and expected budget shortfalls and staff vacancies in the department.

The Archives will still provide general information about their holdings through finding aids and descriptive guides available within the building. Anyone requiring more specific information can visit the Archives or contact an independent researcher for his services. The Archives can supply a list of independent researchers.

The Archives are currently open Monday through Friday, 8:00 AM to 4:30 PM and on Saturday 9:30 AM to 3:30 PM It is closed for most federal and state holidays.

ooooo00000000ooooo

### NEW YORK STATE VITAL RECORDS PROBLEM WORSENS

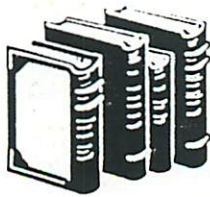
New York State Department of Health has withdrawn public access to the Vital Record indexes. The Department indicated that a copy of the indexes might be placed in the State Library, but this has not been done as of a few months ago.

The Department is accepting orders for copies of certificates for genealogical purposes. Checks are deposited on receipt, but further processing is officially taking a minimum of 6 months, and in most instances much longer.

If you know the city, town or village in which the event took place, you may be able to obtain a certificate from the Registrar of Vital Statistics in that jurisdiction. These offices had previously been referring vital records requests to Albany. If you do not know the local jurisdiction, without the State indexes you have no choice but to go to the Health Department's waiting list.

The problem has been attributed to New York State's severe budget problems, as well as the impact of the AIDS crisis on the Health Department. The State policy is in contrast to that of New York City, which has long made its vital records indexes available to the public. The Family History Library has been allowed to film these records.





## New in the SBCGS Library

Doris Batchelder Crawford



### GENERAL

- Confederate Soldiers in the Civil War. Campaigns, Battles, Sirges, Charges, and Skirmishes, The Confederate States Navy, Foundation of Confederacy.  
Donated by D. D. Hughes 973.7 CON
- Discovering Your Heritage. An Introduction to Family History/ by Alice Eichholz (1977) 929 EIC
- Ellis Island, Gateway to America/ by Loretto Dennis Szucs (1986) 325 SZU
- The Erie Canal/ by Ralph K. Andrist (1964) 974.7 AND
- Germans to America. Lists of Passengers Arriving at U.S. Ports, Vol. 13, Aug. 1859-Dec. 1860/ edited by Ira A. Glazier & P. William Filby (1990) 943 GLA v.13
- As Above, Vol. 14, Jan. 1861-May 1863 (1990) 943 GLA v.14
- Here Rolled the Covered Wagons/ by Albert & Jane Salisbury (1948)  
Donated by Merna McClanathan 979.7 SAL
- Was Your Grandfather a Railwayman? Directory of Railway Archive Sources for Family Historians/ compiled by Tom Richards (1988) 929.72 RIC

### UNITED STATES

- ARKANSAS-Arkansas Gazette Obituaries Index, 1819-1879/ by Stephen J. Chism (1990) 976.7 CHI
- CALIFORNIA-Trail to California. The Overland Journal of Vincent Geiger & Wakeman Bryarly/ edited by David Morris Potter (1945)  
Donated by Merna McClanathan 979.4 POT
- DELAWARE-Delaware Advertiser, 1827-1831, Genealogical Extracts/ by Margaret Mendenhall Frazier (1987) 975.1 FRA
- KANSAS-Obituary Indexes, Phillips County (KS) Genealogical Society  
Donated by Norma Johnson 978.1 PHI
- MARYLAND-The Maryland Militia in the Revolutionary War/ by S. Eugene Clements & F. Edward Wright (1987) 975.2 CLE
- OHIO-Ancestors, Ohio in 1818/ by William Maxwell (1971)  
On Loan by Jayne Craven Caldwell 977.1 MAX
- Early Ohio Settlers. Purchasers of Land in East & East Central Ohio, 1800-1840/ compiled by Ellen Thomas Berry & David A. Berry (1989)  
977.1 BER
- The Frontiersmen. A Narrative/ by Allan W. Eckert (1967)  
On Loan by Jayne Craven Caldwell 977.1 ECK
- Highland Pioneer Sketches & Family Genealogies/ by Elsie Johnson Ayres (1971) On Loan by Jayne Craven Caldwell 977.1 AYR
- TENNESSEE-Fifth Survey District of Tennessee, 1816-1823, Grants 1601-2548, Vol. C/ transcribed by Diane E. Pedersen (1989) 976.8 PED
- Fourth Survey District of Tennessee, 1808-1810, John McClellan, Surveyor/ by James L. Douthat (1988) 976.8 DOU
- WASHINGTON-Washington Pioneers/ by Washington State Genealogical Society, (1991) Vol. 1; Vol. 2 979.7 WAS v.1; v.2

## GREAT BRITAIN

- Catalogue of Searches in the Genealogical Records of England/ The Centre  
for English Genealogy (1989) 929 ENG  
Census Returns on Microfilm, 1841-1881. A Directory to Local Holdings  
in Great Britain, Channel Islands, Isle of Man/ compiled by Jeremy  
Gibson (1988) 5th Edition 929.72 GIB  
Heraldry, Ancestry and Titles. Questions and Answers/ by L. G. Pine  
(1965) 929.6 PIN  
Poll Books c1696-1872: A Directory to Holdings in Great Britain/ by  
Jeremy Gibson & Colin Rogers (1990) 2nd Edition 929.72 GIB

## SURNAMES

- CRAVEN - The House of Cravens/ by Ruth H. McConathy (1972)  
On Loan by Jayne Craven Caldwell 929.2 CRA  
FLINT - Genealogical Register of the Descendants of Thomas Flint of Salem/  
compiled by John Flint & John H. Stone (1860)  
Donated by Henry J. Guerin 929.2 FLI

## TAPES

- Canadian Research, Jan Cloud, 9 February 1991.  
Wales, Genealogy and Bibliography, Annie Lloyd, 12 January 1991.

oooooooo000oooooooo

## COPYRIGHT OFFICE POLICIES

Copyright protects tangible output, not the method of arriving at a certain result. If genealogical material has been arranged in an original way, the compilation is copyrightable; or, if the genealogist has edited the text in a way that is original, a claim can be registered in the editing authorship.

Material copied from a public domain source and merely arranged chronologically, alphabetically, or in some other routine manner can present a problem. This kind of compilation is considered mechanical. Unless the work contains the original authorship that Congress requires for copyright protection, the Copyright Office is not authorized to register the claim.

In the majority of cases, there is some copyrightable authorship to be registered involving original compilation authorship in the selection of material and its arrangement, or in editing annotations, or in the preface, or in describing the material the genealogist has researched.

[This is paraphrased from a letter dated 27 June 1989, U.S. Senator Samuel A. Munn wrote to an inquiry from Georgia Genealogical Society Pres. Rita Binkley Worthy concerning Copyright Office policies.]

ADDRESSES OF VITAL STATISTICS OFFICES

Fees listed below are subject to change. Some states may no longer respond to mail requests.  
For detailed information on each state, write for publication WHERE TO WRITE FOR VITAL RECORDS to:

U. S. Department of Health and Human Services  
Public Health Service  
Office of Health Research, Statistics, and Technology  
National Center for Health Statistics  
3700 East-West Highway  
Hyattsville, Maryland 20782

Alabama	State Dept. of Public Health, Montgomery, AL 36130	\$ 5.00
Alaska	Dept. of Health and Social Services, Pouch H-02G, Juneau, AK 99611	7.00
American Samoa	Registrar of Vital Records, Pago Pago, AS 96799	2.00
Arizona	State Dept. of Health Services, P.O. Box 3887, Phoenix, AZ 85030	8.00-B 5.00-D
Arkansas	Arkansas Dept. of Health, 4815 W. Markham St., Little Rock, AR 72201	5.00-B 4.00-D
California	State Dept. of Public Health, 410 N. St., Sacramento, CA 95814	11.00-b 7.00-D
Canal Zone	Panama Canal Commission, APO Miami, FL 34011	2.00
Colorado	Colorado Dept. of Health, 4210 E. 11th Ave., Denver, CO 80220	6.00
Connecticut	Dept. of Health Services, 150 Washington St., Hartford, CT 06106	5.00
Delaware	Office of Vital Statistics, P.O. Box 637, Dover, DE 19903	5.00
District of Columbia	D.C. Dept. of Human Resources, 425 I St., NW, Washington, DC 20001	8.00
Florida	Dept. of Health, P. O. Box 210, Jacksonville, FL 32231-0042	8.00-B 4.00-D
Georgia	Dept. of Human Resources, 47 Trinity Ave., SW, Atlanta, GA 30334	3.00
Guam	Dept. of Public Health, P.O. Box 2816, Agana, GU 96910	5.00
Hawaii	State Dept. of Health, P. O. Box 3378, Honolulu, HI 96801	2.00
Idaho	Bureau of Vital Statistics, Statehouse, Boise, ID 83720	8.00
Illinois	State Dept. of Public Health, Springfield, IL 62761	15.00
Indiana	State Board of Health, P.O. Box 1964, Indianapolis, IN 46206	6.00-3 4.00-D
Iowa	Dept. of Health, Lucas State Office Bldg., Des Moines, IA 50319	6.00
Kansas	State Dept. of Health, Forbes Field Bldg., 740 Topeka, KS 66620	6.00
Kentucky	Dept. for Health Services, 275 E. Main St., Frankfurt, KY 40621	5.00-B 4.00-D
Louisiana	Office of Health Services, P.O. Box 60630, New Orleans, LA 70160	8.00-B 5.00-D
Maine	Dept. of Human Services, Station 11, State House, Augusta, ME 04333	5.00
Maryland	State Dept. of Health, P.O. Box 13146, Baltimore, MD 21203	4.00
Massachusetts	Registry of Vital Statistics, 150 Tremont St., Boston, MA 02111	6.00
Michigan	Dept. of Public Health, 3500 N. Logan St., Lansing, MI 48909	10.00
Minnesota	Minnesota Dept. of Health, P.O. Box 9441, Minneapolis, MN 55440	11.00-B 8.00-D
Mississippi	State Board of Health, P. O. Box 1700, Jackson, MS 39215	11.00-B 5.00-D

Missouri	Dept. of Public Health, P.O. Box 570, Jefferson City, MO 65102	4.00
Montana	State Dept. of Health, Helena, MT 59620	5.00
Nebraska	State Dept. of Health, P.O. Box 95007, Lincoln, NE 68509-5007	6.00-B 5.00-D
Nevada	Dept. of Human Resources, Capitol Complex, Carson City, NV 89710	7.00
New Hampshire	Health & Welfare Bldg., Hazen Dr., Concord, NH 03301	3.00
New Jersey	State Dept. of Health, Trenton, NJ 08625	4.00
New Mexico	New Mexico Health Dept., P.O. Box 968, Santa Fe, NM 87504-0968	10.00-B 5.00-D
New York	State Dept. of Health, Tower Bldg., Albany, NY 12237	15.00
New York City	Dept. of Health of New York City, 125 Worth St., New York, NY 10013	5.00
North Carolina	Dept. of Human Resources, P. O. Box 2091, Raleigh, NC 27602	5.00
North Dakota	Division of Vital Records, Bismark, ND 58505	7.00-B 5.00-D
Ohio	Ohio Dept. of Health, 65 S. Front St., Columbus, OH 43215	7.00
Oklahoma	State Dept. of Health, P. O. Box 53551, Oklahoma City, OK 73152	5.00
Oregon	Oregon State Health Division, P. O. Box 116, Portland, OR 97207	8.00
Pennsylvania	State Dept. of Health, P.O. Box 1528, New Castle, PA 16103	4.00-B 3.00-D
Puerto Rico	Dept. of Health, San Juan, PR 00908	2.00
Rhode Island	State Dept. of Health, 75 Davis St., Providence, RI 02908	5.00
South Carolina	South Carolina Dept. of Health, Columbia, SC 29201	6.00
South Dakota	State Dept. of Health, Joe Foss Office Bldg., Pierre, SD 57501	5.00
Tennessee	Dept. of Public Health, Cordell Hull Bldg., Nashville, TN 37219	10.00-B 5.00-D
Texas	Texas Dept. of Health, 1100 W. 49th St., Austin, TX 78756	8.00
Utah	Utah State Dept. of Health, Salt Lake City, UT 84145-0500	
Vermont	Vermont Dept. of Health, Burlington, VT 05402	5.00
Virginia	State Dept. of Health, P.O. Box 1000, Richmond, VA 23208-1000	5.00
Virgin Islands		
St. Croix	Charles Harwood Hospital Complex, P. O. Box 520, Christiansted, St. Croix, VI 00820	5.00
St. Thomas	Knud Hansen Hospital Complex, P. O. Box 7309, St. Thomas, VI 00801	5.00
Washington	Vital Records, P. O. Box 9709, Olympia, ET-11, WA 98504	11.00
West Virginia	Dept. of Health, State Office Bldg., No. 3, Charleston, WV 25305	5.00
Wisconsin	Wisconsin Div. of Health, P. O. Box 309, Madison, WI 53701	8.00
Wyoming	Dept. of Health and Social Services, Hathaway Bldg., Cheyenne, WY 82002	5.00-B 3.00-D
U.S. CITIZEN IN FOREIGN COUNTRY	DEPT. OF STATES PASSPORT SERVICES, CORRESPONDENCE BRANCH, WASHINGTON DC (202/326-6128)	20524 4.00

# Q&A

## Questions & Answers

Address your questions to:  
Questions & Answers Editor, Ancestors West  
Post Office Box 1303  
Santa Barbara, CA 93116-1303

Q: What is the "Yellow Book of Funeral Directors"?

A: The National Yellow Book of Funeral Directors is another source to check in looking for family information. This book lists all the funeral homes in the United States and Canada. Funeral home records may contain valuable information on the deceased for genealogical purposes.

The book contains information on where to send for death certificates and what information to give when sending for the certificate. The entries under each state lists the town, county, area code, zip code, followed by the name of funeral homes, address and phone numbers. Each entry has numbers enclosed in brackets, which refer to daily newspapers published in that area. Newspapers may contain an obituary for the deceased. If the name of a funeral home is not listed where you think your ancestor lived, write to one of those listed in the surrounding area.

To obtain a copy of the book contact: NOMIS PUBLICATIONS, INC. P.O. Box 5122, Youngstown, OH 44514. Call toll free 1-800-321-7479. Pocket size (5"x7") \$20; Standard size (8½"x11") \$40.

Q: Who were the Huguenots?

A: "Huguenot" was the name given to French Protestants from the 16th to 18th century. John Calvin (1509-1564) preached opinions opposed by the Catholic Church. Calvinism was particularly advocated by the middle class and some of the nobility. In 1572 thousands of Protestants were killed in the Saint Bartholomew's Day massacre. Many fled France at that time to nearby countries. The massacre only served to strengthen their cause. By 1598 they had gained official acceptance when King Henry IV signed the Edict of Nantes which guaranteed the Huguenots religious and civil liberties.

Many of those who fled to Holland and the German states found their way to England and to the friendly English Colonies in North America.

The major collection of information can be found at:  
Huguenot Historical Society, Box 339, New Palta, NY 12561

The National Huguenot Society was formed in 1951 as a federation of state societies. Individual applicants join a local state society and automatically become a member of the national society.

Address: The National Huguenot Society  
Hearst Hall  
Washington National Cathedral  
Wisconsin Ave. and Woodley Road, N.W.  
Washington, DC 20016

## COMPUTER CHIPS

by  
JAMES C. Paddock

If you are a first time purchaser, or if you are upgrading, talk with several friends about their units. Ask questions about warranties, utility, expansion, etc. Cheapness may be poor economy. Let someone else experiment with minor brands. Narrow your search to one or two brands or sources; consider the memory requirements of the software you will be using. Your software selection, if possible, should be made first, to accommodate your objectives. After the brand, source, and memory factors are determined, follow the advise of your supplier. Allow room for expansion for computer memory and slots for internal cards. Quality manufacturers and suppliers, even via catalogue, want your business. Most will be happy to guide you as to peripheral and internal devises.

The computer "brain" is the CPU (central processing unit). It is on the mother board in your computer. The original IBM or compatible were called "XT types", and most have 8088 intel or similar CPUs. They handle 8 data items at a time.

The "AT types" have 80286 CPUs. These are commonly called 286s. They typically operate 5 to 10 times faster than the XTs, and may handle 16 data items at a time.

The most popular computers today have 80386 CPUs. Those operate 10 to 30 times faster than the XTs, and may handle 32 data items at a time, depending upon the software or peripheral devices in use.

The economy unit for 386s use a 386SX CPU, which will perform almost equal to a regular 386.

There are 486 units and now even 586 units available, at expensive prices. They will be next decade's machines.

Most genealogy users currently find an AT type computer with the 80286 CPU is adequate. Those with older 8088 units have monochrome screens only. Those systems will soon be candidates for gifts to grandchildren, or to a charity.

By going about the task with an open mind, a plan, and the realization that the job is going to require either one's precious time, precious money, or both, the process can be educational, worthwhile, and perhaps even rewarding.

\* \* \* \* \*

COMPUTER CHIPS is addressed to beginning users or buyers. There is no intent to recommend or replace, any brand of hardware or software.

\* \* \* \* \*

**CALIFORNIA SOUTHERN RAILROAD CO.**, Gen. Freight and Pass. Agency, John L. Tinslow, Genl. Agent, C. W. Rasey, Ticket Agent, 637 State st.

**CASEBEN, J. W.**, res. Haley st., below Garden.

**CASTLE, JOHN**, carpenter, (with H. J. Burdick), res. N. cor. Anacapa and Carrillo sts.

**CASTLE, ROBERT**, decorator, (with Bell & McCann.)

**CASTRO, FRANCISCO**, painter, res. Cañon Perdido st., bet. Chapala and De la Viña.

**CASTRO, FRANK**, carpenter, res. Chapala st., bet. Ortega and De la Guerra.

**CASTRO, POFIRIO**, painter, res. Gutierrez st., bet. Chapala and De la Viña.

**CASTRO, MRS. TOMASA**, dressmaker, res. Chapala st., bet. Ortega and De la Guerra.

**CATLIN, P. H.**, confectionary and fruit stand, 506 State st., res. same.

**CAVALLETTI, ANTONIO A.**, sailor, res. Santa Barbara st., bet. Yunonuli and Montecito.

**CAVALLETTI, MISS ANNIE**, housekeeper, res. Gutierrez st., bet. Santa Barbara and Anacapa.

**CAVALLETTI, JOSE**, laborer, res. Ortega st., bet. State and Anacapa.

**CAVALLETTI, MRS. MANUELA**, res. N. cor. San Andres and Arrellaga sts.

**CAVALLETTI, MRS. RAMONA**, dressmaker, res. Chapala st., bet. Cañon Perdido and Carrillo.

**CAVALLETTI, VIGNTE**, farmer, res. Carrillo st., bet. San Pascual and San Andres.

**CAVALLETTI, VIGNTE**, laborer, res. E. cor. San Andres and Arrellaga sts.

**CAVANAUGH, MISS ALICE**, domestic, res. 1607 Bath st.

**CAVE, JOSEPH**, stair-builder, Nixon's Mills, res. on Hollister Avenue.

**CESTER, GEORGE**, carpenter, res. Cota st., bet. Bath and Castillo.

**CENTRAL RESTAURANT**, H. W. Lawrence, proprietor, 985 State st.

**CEROWICZ & MORELL**, tailors, 511 State st.

**CEROWICZ, M.**, (of Cerowicz & Morell), res. 102 Haley st.

**CHAFF, S. S.**, pastor Faith Mission, res. E. cor. Cota and Gutierrez sts.

**CHAMBERS, E. B.**, watchmaker and jeweler, 706 State st., res. same.

**CHAMBERS, F. J.**, barber, res. De la Viña st., bet. Gutierrez and Haley.

**CHAMBERS, MRS. F. J.**, dressmaker, Clock Building, res. De la Viña st., bet. Gutierrez and Haley.

**CHAMPION STABLES**, A. F. McPhail, proprietor, 531 and 536 State st.

**CHANNEL CITY MILLS CO.**, proprietors, Joseph V. Elliott, George W. Humphrey and Irving W. Reeves, Chapala st., bet. Cota and Ortega.

**CHAPMAN, MRS. FERNOSA**, res. Santa Barbara st., bet. De la Guerra and Cañon Perdido.

**CHAND, JOSEPH WILLIAM**, butcher, (with Leon Carteri), res. S. cor. Figueroa and Garden sts.

**CHAPMAN, LORENZO**, carpenter, res. 224 State st.

**CHAUVEL, LOUIS**, laborer, res. Gutierrez st., bet. Rancheria and San Pascual.

**CHEYNEY, CHARLES**, engineer, S. B. E. L. & P. Co., res. Mason st., bet. Garden and Santa Barbara.

**CHICAGO CLOTHING STORE**, 719 State st.

**CHICAGO LAGER BEER BOTTLING AGENCY**, Julius J. Lafleur, 106 State st.

**CHICAGO SANTA FE & CALA. Ry. Co.**, Gen. Freight and Pass. Agency, John L. Tinslow, Gen. Agent, C. W. Rasey, Ticket Agent, 637 State st.

**CHILDS, GEO. E.**, capitalist, res. N. cor. Anacapa and Haley sts.

**CHILDS, SAMUEL**, stage driver, res. Commercial Hotel.

**CHISLETT & SONS**, boot and shoe store, 726 State st.

**CHISLETT, H. G.**, (of Chislett & Sons), res. N. cor. Laguna and Anapamu sts.

**CHISLETT, JOHN, JR.**, (of Chislett & Sons), res. N. cor. Laguna and Anapamu sts.

**CHISLETT, JOHN, SR.**, (of Chislett & Sons), res. N. cor. Laguna and Anapamu sts.

**CHITTENDEN, MRS. M. V.**, res. Sola st., bet. Castillo and Rancheria.

**CHRISTOPHERSON, ALFRED**, painter, res. Gutierrez st., bet. Castillo and Bath.

**CHUNG WONG**, dealer in Japanese and Chinese curios, 927 State st., res. same.

**CHURCH, N.**, res. De la Viña st., bet. Cota and Ortega.

**CHULEN, JOSEPH**, laborer, res. St. Charles Hotel.

**CITY PHARMACY**, Louergan & Lucas, proprietor, Clock Building State st.

**CLARK, ARTHUR**, gardener, res. E. cor. Sola and Santa Barbara sts.

**CLARK, MRS. A. I.**, res. 1926 Santa Barbara st.

**CLARK, A. M.**, proprietor American Steam Laundry, res. I. O. O. F. Building, State st.

**CLARK, ABRAM W.**, farmer, res. 223 W. Ortega st.

**CLARK, E. D.**, carpenter, res. Victoria st., bet. Anacapa and Santa Barbara.

**CLARK, FRANK H.**, contractor and builder, res. W. cor. Figueroa and Garden sts.

**CLARK, GEORGE A.**, proprietor Sulphur Baths, res. Burton Mound.

**CLARK, G. W.**, foreman, (with Chas. Pierce), res. 611 State st.

**CLARK, H. A.**, carpenter, res. Anacapa st. bet. Haley and Gutierrez.

**CLARK, HENRY**, (of Santa Barbara Planing Mill Co.), res. Santa Barbara House, Haley st.

**CLARK, J. L.**, surveyor, (with Geo. F. Wright.)

**CLARK, J. R.**, merchant, State st., res. Santa Barbara st., bet. Figueroa and Anacapa.

Continued from Vol. 17, #1, March 1991

1888 SANTA BARBARA CITY DIRECTORY

CLARK, JOHN W., carpenter, res. W. cor. Figueroa and Garden sts.  
 CLARK, L. M., policeman, res. Milpas st., bet. Cañon Perdido and De la Guerra.  
 CLARK, MITCHELL, capitalist, res. E. cor. Gutierrez and San Pascual sts.  
 CLARK, THOMAS, JR., (of Santa Barbara Planing Mill), res. Santa Barbara House, Haley st.  
 CLARKE, J. ROBERT, dry goods, No. 629 State st., res. Santa Barbara st., bet. Figueroa and Anacapa.  
 CLARKE, MISS M. H., res. 1314 Anacapa st.  
 CLARNO, WILLIAM H., stockman, res. N. cor. Rose Avenue and Gutierrez sts.  
 CLEGG, ROBERT, druggist, res. Chapala st., bet. Carrillo and Figueroa.  
 CLEMENS, LEON M., trimmer, (with Roador & Ott), res. Cañon Perdido st., bet. Rancheria and Castillo.  
 CLIFFORD, J. M., res. De la Guerra st., bet. De la Viña and Bath.  
 CLIFTON, HENRY, (of Wilson & Clifton,) res. 720 Anacapa st.  
 CLINTON, MISS MARY A., cook, res. 223 W. Anacapa st.  
 COATS, GEORGE W., well borer, res. S. cor. Figueroa and Castillo sts.  
 COATS, JAMES, well borer, res. S. cor. Figueroa and Castillo sts.  
 COATS, WILLIAM M., well borer, res. S. cor. Figueroa and Castillo sts.  
 COATS, W. H., hydraulic and sanitary engineer, res. Brinkerkhoff Avenue, bet. Cota, Haley, Chapala and De la Viña sts.  
 COBB, WILLIAM B., laborer, res. 1517 Chapala st.  
 COCHRANE, MRS. MARGARET, res. 234 E. Haley st.  
 COCHRANE, ROBERT A., clerk, res. 234 E. Haley st.  
 COE, MRS. E. F., res. Quarantina st., bet. Ortega and De la Guerra.  
 COFFIN, GEO. W., ex-Mayor, real estate agent, office, 337 State st., res. E. cor. Solá and Anacapa sts.  
 COLBATH, H. M., contractor and builder, res. E. cor. Chapala and Anacapa sts.  
 COLE, E. W., policeman, res. De la Viña st., bet. Cota and Ortega.  
 COLE, FRANK, res. Bath st., bet. Figueroa and Anacapa.  
 COLE, HENRY, res. Castillo st., bet. Micheltorena and Solá.  
 COLE, JOHN F., res. Bath st., bet. Figueroa and Anacapa.  
 COLEMAN, T. D., carpenter, Stourms' Wharf, res. S. cor. Montecito st. and Gray Avenue.  
 COLEMAN, W. S., carpenter, res. De la Viña st., bet. Cota and Ortega.  
 COLLEGIATE SCHOOL ROOMS, proprietors, McCune & Wallace, 25 and 26 Clock Building.  
 COLLINS, CHARLES P., book-keeper, res. Quinientos st., bet. Milpas and Nopal.  
 COLLINS, MRS. G. N., res. Quinientos st., bet. Milpas and Nopal.  
 COLLINS, GEORGE F., surveyor, (with Cooper & Dreyfus), res. Rose Avenue, bet. Garden, Tagana, Haley and Gutierrez sts.  
 COLLINS, J., contractor, res. Ortega House.  
 COLLINS, J. C., carpenter, res. Leland House, State st.

COLLINS, JAMES, carpenter, res. De la Viña st., bet. Haley and Cota.  
 COLLINS, W. O., carpenter, res. Santa Barbara st., bet. Montecito and Gutierrez.  
 COLLINS, W. F., carpenter, Nixon's Mills, res. 109 W. Cañon Perdido st.  
 COLT, SAMUEL, miner, res. N. cor. Anacapa and Arrellaga sts.  
 COMMERCIAL BANK, 1241 State st.  
 COMMERCIAL HOTEL, W. S. Low, proprietor, 531 to 537, State st.  
 COMPTON, ROBERT, teamster, res. Milpas st., bet. Cota and Ortega.  
 CONSTOCK, G. L. M., General Superintendent Transfer Co.  
 CONANT, FRANK R., watchmaker and jeweler, 619 State st., res. same.  
 CONANT, PAUL B., surveyor, (with Alfred Poott), res. Ortega House.  
 CONRAD, CHARLES, night clerk at San Marcos Hotel, res. same.  
 CONNOLLY, MRS. B., res. Cañon Perdido st., bet. San Pascual and San Andres.  
 CONNOLLY, JAMES J., contracting plasterer, res. Cañon Perdido st., bet. San Pascual and San Andres.  
 CONRAD, F. W., Principal of Public Schools, res. Milpas st., bet. Quinientos and Mason.  
 CONRAD, MRS. J. E. B., res. Milpas st., bet. Quinientos and Mason.  
 CONRAD, NICOLAS, painter, (with Longawa), res. Anacapa st., bet. Ortega and De la Guerra.  
 COSTANTO, O., carpenter, Nixon's Mills.  
 CONWAY, JAMES, laborer, res. Santa Barbara st., bet. Mason and Yononali.  
 COOK, MRS. ELIZABETH, res. S. cor. San Andres and Micheltorena sts.  
 COOK, G. G., saddler, (with S. Loomis), res. State st., bet. Montecito and Gutierrez.  
 COOK, I. N., proprietor Cook's Photographic Studio, res. 1006 Bath st.  
 COOK, JAMES, (of Hayward & Cook), res. Cota st., bet. De la Viña and Chapala.  
 COOK'S PHOTOGRAPHIC STUDIO, 814 State st.  
 COOPER & DREYFUS, real estate agents, 563 State st.  
 COOPER, A. S., (of Cooper & Dreyfus), res. De la Guerra st., bet. De la Viña and Bath.  
 COOPER, J. W., capitalist, Director of Commercial Bank, res. 1405 Chapala st.  
 COOPER & GOYER, artists, room 11, 1208 State st.  
 COOPER, MISS MAY, (of Cooper & Goyer), res. 1208 State st.  
 COPE, WALTER BURTON, (of Fernald, Cope & Boyce), res. 813 State st.  
 COPPLAND, J. H., printer, in DAILY INDEPENDENT office, res. Gutierrez st., bet. De la Viña and Bath.  
 CORDEIRO, ALBERTO, porter, (with C. E. Hoffman), res. Anacapa st., bet. De la Guerra and Cañon Perdido.



# Santa Barbara Nursery!

\* \* \* \* \*

Located  
Seven Miles  
west  
of  
Santa Barbara.



\* \* \* \* \*

Depot:  
N. cor. Mon-  
tecito and  
Castillo Sts.,  
Santa Barbara.

\* \* \* \* \*

JOSEPH SEXTON, Proprietor.

—WHERE—

ALL : FRUIT : TREES

Best adapted to the locality can be found.

ALSO, Pot Plants and hardy Evergreen Trees.  
Shrubbery, consisting of Pine, Cypress, Blue  
Gum, Pepper, Palms and Roses.

Flowering Plants, Etc., in Great Variety.

- CORDERO, Miss AMELIA, dressmaker, res. S. cor. Cañon Perdido and Garden sts.
- CORDERO, Mrs. O., cook, res. W. cor. De la Viña and Arrellaga sts.
- CORDERO, Mrs. O., res. Figuerou st., bet. State and Chapala.
- CORDERO, CHARLES, hostler, Champion Stables, res. same.
- CORDERO, Mrs. EDUVISA, res. Cañon Perdido st., bet. Santa Barbara and Garden.
- CORDERO, ESTANISLAUS S., capitalist, res. Chapala st., bet. Carrillo and Cañon Perdido.
- CORDERO, FRANCISCO, carpenter, res. Laguna st., bet. Cañon Perdido and Carrillo.
- CORDERO, FRANCISCO, res. Carrillo st., bet. Santa Barbara and Anacapa.
- CORDERO, GUADALUPE, laborer, res. Carrillo st., bet. Garden and Santa Barbara.
- CORDERO, GUILLERMO, laborer, res. N. cor. Santa Barbara and Carrillo sts.
- CORDERO, JOSE, laborer, res. Garden st., bet. Arrellaga and Michel-  
torona.
- CORDERO, JOSE ANTONIO, laborer, res. Garden st., bet. Figueroa and Carrillo.
- CORDERO, JOSE D., omnibus proprietor, res. Garden st., bet. Cañon Perdido and Carrillo.
- CORDERO, JOSE DE JESUS, laborer, res. N. cor. Garden and Cañon Perdido sts.
- CORDERO, JUAN, teamster, res. Carrillo st., bet. Garden and Laguna.
- CORDERO, JUAN A., hostler, Johnson's Stables, res. Anacapa st., bet. State and Chapala.
- CORDERO, JUAN DE JESUS, laborer, res. Garden st., bet. Cañon Perdido and Carrillo.
- CORDERO, LUCAS, gardenor, res. Cañon Perdido st., bet. Garden and Laguna.
- CORDERO, Miss LUISA, nurse, res. W. cor. Valerio and Garden sts.
- CORDERO, MANUEL, laborer, res. Chapala st., bet. Ortega and De la Guerra.
- CORDERO, MANUEL, laborer, res. Cañon Perdido st., bet. Laguna and Garden.
- CORDERO, Miss MARIA DE LOS ANGELES, domestic, res. De la Guerra st., bet. State and Anacapa.
- CORDERO, MARIANO, omnibus proprietor, res. Garden st., bet. Cañon Perdido and Carrillo.
- CORDERO, MIGUEL, teamster, res. N. cor. Santa Barbara and Carrillo sts.
- CORDERO, Mrs. RAMONA P. DE, res. Canal st., bet. Carrillo and Figuerou.
- CORDERO, Miss ROSENDA, res. Carrillo st., bet. Garden and Laguna.

**CORDERO, SALVADOR**, vaquero, res. N. cor. Santa Barbara and Carrillo sts.  
**CORDERO, TOMAS**, laborer, res. Carrillo st., bet. Santa Barbara and Anacapa.  
**CORDERO, TOMAS**, whitewasher, res. Carrillo Avenue, bet. State, Anacapa, Carrillo and Cañon Perdido sts.  
**CORDERO MRS TOMASA**, domestic, res. De la Guerra st., bet. Chapala and De la Viña.  
**CORDERO, TRANQUILINO**, vaquero, res. Cañon Perdido st., bet. Santa Barbara and Garden.  
**CORREA, CLEMENTE A.**, laborer, res. Santa Barbara st., bet. Haley and Cota.  
**CORREA, MRS FELIPA**, res. Santa Barbara st., bet. Haley and Cota.  
**COTA, AUGUSTO**, laborer, (with Santa Barbara Lumber Co.), res. Laguna st., bet. Haley and Cota.  
**COTA, BENITO**, vaquero, res. Carrillo st., bet. Chapala and De la Viña.  
**COTA, EMILIO**, laborer, res. Ortega st., bet. Salsipuedes and Quantilino.  
**COTA, FEDERICO**, laborer, res. Carrillo st., bet. Santa Barbara and Anacapa.  
**COTA, FRANCISCO**, painter, res. Carrillo st., bet. Anacapa and Santa Barbara.  
**COTA, JOSE MARIA**, laborer, res. Cañon Perdido st., bet. Santa Barbara and Garden.  
**COTA, MISS M. M.**, res. Figueras st., bet. State and Anacapa.  
**COTA, PACIFIC**, hair rope maker, res. W. cor. Chapala and Figueras sts.  
**COTA, VICTOR**, laborer, (with Santa Barbara Lumber Co.), res. Laguna st., bet. Haley and Cota.  
**COUNTY NATIONAL BANK**, 800 State st.  
**COUBINS, DAVID**, carpenter, Nixon's Mills, res. E. cor. Chapala and Anapamu sts.  
**COYTELENO, J. D.**, butcher, (at Palace Market), res. 1214 Garden st.  
**COYTELENO, MISS MARY LOUISE**, telephone operator, res. 1214 Garden st.  
**COYARRUBIAS, CAMILO J. P.**, painter, res. Santa Barbara st., bet. Ortega and De la Guerra.  
**COYARRUBIAS, O. M.**, proprietor of Fashion Stables, 232 State st., res. Fig Avenue, bet. State, Chapala, Cota and Haley sts.  
**COYARRUBIAS, MISS PASQUALINA**, type writer, City Clerk's office, res. Santa Barbara st., bet. Ortega and De la Guerra.  
**COWLES, LOUIS L.**, res. Anapamu st., bet. Laguna and Canal.  
**COWLES, PAUL**, telegraph and city editor, DAILY INDEPENDENT, res. Anapamu st., bet. Canal and Laguna.  
**COWLES, W. NORTHROP**, capitalist, res. the Arlington.  
**COX, A. M.**, candy maker and confectioner, Hawley Block, State st., res. same.  
**COX, CHARLES**, plasterer, res. De la Viña st., bet. Cota and Ortega.

**COY, J. B.**, stockman, res. Anacapa st., bet. Montecito and Gutierrez.  
**COYLE, MRS. K. O.**, res. S. cor. Bath and Carrillo sts.  
**COYLE, M.**, plumber, (with John Meany), res. N. cor. Chapala and Carrillo sts.  
**COYNE, FRANCISCO**, carpenter, res. Haley st., bet. Garden and Laguna.  
**CRABB, ALONZO**, Deputy Sheriff, Court House, res. Bradbury Avenue, bet. Cota, Ortega, De la Viña and Chapala sts.  
**CRAMMILL, JOHN**, carpenter, res. N. cor. De la Guerra and Bath sts.  
**CRANE, MISS MARY M.**, proprietor Kellogg House, Anapamu st., bet. State and Anacapa, res. same.  
**CRANE, ALPHONSE**, (of Crane & Son), res. 1409 De la Viña st.  
**CRANE & SON**, real estate dealers, 723 State st.  
**CRANE, H. G.**, (of Crane & Son), res. 1409 De la Viña st.  
**CRANE'S HALL**, Hoffman & Son, proprietors, 603 State st.  
**CRAVIOTTA, ANTONIO**, laborer, res. S. cor. Bath and Victoria sts.  
**CRAVIOTTA, FRED E.**, stockman, res. S. cor. Bath and Victoria sts.  
**CRAVIOTTA, MISS LEONA**, tailoress, res. S. cor. Bath and Victoria sts.  
**CRAWFORD, JAMES**, blacksmith, res. N. cor. Santa Barbara and Haley sts.  
**CRAWFORD, W. B.**, carpenter, res. Montecito st., bet. State and Anacapa.  
**CRONISE, MISS A. J.**, modista, res. Anapamu st., bet. State and Anacapa.  
**CROOKS, E. W., M. D.**, office 639 State st., res. Montecito.  
**CROSS, JOHN**, res. Ortega st., bet. Castillo and Bath.  
**CROSS, JOHN E.**, salesman in California Market, res. Anapamu st., bet. Castillo and Rautcheria.  
**CROSSMAN, MISS FANNY**, ironer, American Steam Laundry, res. Montecito st., bet. Anacapa and Santa Barbara.  
**CROTCH, MISS MARY H.**, clerk, (with Paul R. Wright), res. Mitchell House.  
**CROWELL, CHAS. D.**, expressman, res. 408 W. De la Guerra st.  
**CULBERTSON, GEORGE A.**, capitalist, res. 1214 Anacapa st.  
**CULBERTSON, JOHN C.**, capitalist, res. 120 Micheltorena st.  
**CUMMINGS, WILLIAM F.**, machinist and engineer, (at S. B. Foundry), res. Haley st., bet. Garden and Laguna.  
**CURLEY, THOMAS B.**, teamster, res. Chapala st., bet. Ortega and De la Guerra.  
**CURRAN, J. PIERCE**, salesman in California Market, res. 221 E. Haley st.  
**CURRAN, MRS. MAGGIE**, res. 221 E. Haley st.  
**CURRAN, MISS MARY**, dressmaker, (with Mrs. Cronise), res. 221 E. Haley st.  
**CURRAN, PHILIP S.**, seaman, res. S. cor. Anacapa and Yauonali sts.  
**CURRIE, N. M.**, clerk, (in Chicago Clothing Store), res. same.  
**CUSACK, MISS MINNIE**, waiter at Commercial Hotel, res. same.

CUMMINS, JAMES, locomotive engineer, res. Gray Avenue, bet. Mason and Montecito sts.  
 CYCLONE WINDMILL. L. D. Gates, agent, Bath st., bet. Ortega and De la Guerra.

## D.

DALLY, HENRY G., JR., mason, res. Chapala st., bet. Ortega and De la Guerra.  
 DALLY, HENRY G., SR., cooper, res. Chapala st., bet. Ortega and De la Guerra.  
 DALLY, JOSE, laborer, res. Chapala st., bet. Ortega and De la Guerra  
 DALY, JAMES, JR., (of Moore, Daly & Co.), res. 1214 Anacapa st.  
 DANA, E. E., dry goods clerk, res. Milpas st., bet. Figueroa and Carrillo.  
 DANCASTER, FRANCIS H., farmer, res. Chapala st., bet. Haley and Cota.  
 DANIELS, TOM P., res. Ortega st., bet. State and Chapala.  
 DARLING & Co., grocers, 634 State st.  
 DARLING, MISS MAGGIE, waiter at Western Hotel, res. same.  
 DARLING, SANFORD, (of Darling & Co.), res. N. cor. Anacapa and Mason sts.  
 DARRILL, MRS. N., hair-worker, res. Bath st., bet. Micheltorena and Arrollaga.  
 DARR, A., locomotive engineer, res. Milpas st., bet. Figueroa and Carrillo.  
 DARR, MRS. A. M., dressmaker, 723 State st., res. Milpas st., bet. Carrillo and Figueroa.  
 DAVENPORT, J. R., barber, res. Gutierrez st., bet. Santa Barbara and Anacapa.  
 DAVIDSON, DAVID R., (of Knowles & Davidson), res. Cota st., bet. Chapala and De la Viña.  
 DAVIES, WALTER J., photographic agent, 215 E. Victoria st.  
 DAVIS, ALFRED, book-keeper and collector, res. Chapala st., bet. Haley and Cota.  
 DAVIS, J. SCUDDER, res. Lawrence House.  
 DAVIS, W. H., barber, at the Arlington, res. 701 State st.  
 DAVISON, FRED, foreman with John Longawa, res. 107 W. Cañon Perdido st.  
 DAWK, T. R., book-keeper, (with Edwards & Boescke), res. N. cor. Bath and Anapamu sts.  
 DAY, HARRY, laborer, res. Gray Avenue, bet. Mason and Montecito sts.  
 DAY, W. N., carpenter, (with Thos. Nixon), res. 404 De la Guerra st.  
 DAYKIN, MISS M. H., cashier at the California Market, res. Garden st., bet. Arrellaga and Micheltorena.  
 DAYTON, MISS JENNIE, artist, res. Anacapa st., bet. Valerio and Islay.

DEAN, E. W., capitalist, res. 1222 Garden st.  
 DE BLOIS, F., carpenter, res. N. cor. Rancheria and Carrillo sts.  
 DE CLAIMONT, RALPH, night clerk at Commercial Hotel, res. same.  
 DEPERIO, ANTONIO, bootblack, (with Helmer & Silva), res. E. cor. Chapala and Cañon Perdido sts.  
 DE LA GUERRA, CARLOS, teacher of Spanish, res. De la Guerra mansion, City Hall Plaza  
 DE LA GUERRA, GASPAB, musician, res. De la Guerra st., opposite City Hall.  
 DE LA GUERRA, MRS. JOSEFA, De la Guerra mansion, City Hall Plaza.  
 DE LA GUERRA, MRS. TRINIDAD, res. De la Guerra st., opposite the City Hall.  
 DE LANEY, MRS. U., res. Anapamu st., bet. Quarantina and Salsipuedes.  
 DELANEY, HENRY T., horse trainer, res. N. cor. Mason and Santa Barbara sts.  
 DELANEY, JAMES, keeper of race track at Agricultural Park, res. N. cor. Mason and Santa Barbara sts.  
 DE LANEY, J. J., res. Anapamu st., bet. Quarantina and Salsipuedes.  
 DE LA TORRE, ANTONIO, JR., fireman, Santa Barbara Electric Light and Power Co., res. 1305 Bath st.  
 DE LA TORRE, ANTONIO, SR., res. Santa Barbara st., bet. Ortega and Cota.  
 DE LA TORRE, FRANCISCO, blacksmith, (with Eberle & Lowe), res. Salsipuedes st., bet. De la Guerra and Cañon Perdido  
 DE LA TORRE, JUAN, teamster, res. Santa Barbara st., bet. Ortega and Cota.  
 DE LA TORRE, JOSE, teamster, res. Salsipuedes st., bet. Cañon Perdido and De la Guerra  
 DE LA TORRE, MISS JOSE, dressmaker, over County Bank, res. Salsipuedes st., bet. De la Guerra and Cañon Perdido.  
 DELAROULE, F., butcher, (at Palace Market), res. same  
 DEL VALLE, MISS ADELA, dressmaker, res. Ortega st., bet. State and Anacapa.  
 DEL VALLE, HENRY, res. Ortega st., bet. State and Anacapa.  
 DEL VALLE, MRS. J. R., res. Ortega st., bet. State and Anacapa.  
 DEL VALLE, JOSE JESUS, laborer, res. Ortega st., bet. State and Anacapa.  
 DE MARTINI, MRS. NORA, res. W. cor. Mason and Santa Barbara sts.  
 DEN, ALFONSO, capitalist, res. Garden st., bet. Micheltorena and Arrollaga.  
 DEN, AUGUSTUS H., ranchero, res. W. cor. Chapala and Figueroa sts.  
 DEN, EMANUEL R., capitalist, res. De la Guerra st., bet. Bath and De la Viña.  
 DEN, NICOLAS G., Director of the Occidental Development Co., res. E. cor. Castillo and Montecito sts.

- DEB, WILLIAM A.**, interpreter, res. Anacapa st., bet. Gutierrez and Haley.  
**DERIEX, WILLIAM I.**, teamster, res. Castillo st., bet. Anapamu and Figueroa.  
**DESINELLO, CHRISTOPHER**, ranchero, res. E. cor. Figueroa and Laguna sts.  
**DESINELLO, FERDINAND**, Clerk, (with W. O. Shaw), res. E. cor. Figueroa and Laguna sts.  
**DESINELLO, MISS MARY**, dressmaker, res. E. cor. Figueroa and Laguna sts.  
**DESMOND HOUSE, Mrs. John Desmond**, proprietress, De la Viña st., bet. Sola and Micheltorena.  
**DESMOND, JOHN**, res. Desmond House.  
**DESMOND, MRS. JOHN**, res. Desmond House.  
**DEWLANEY, GRANT**, carriage maker, (with Hunt, Son & Schuster), res. 1219 Santa Barbara st.  
**DEWLANEY, WILLIAM**, Capitalist, res. 1219 Santa Barbara st.  
**DIDDLEB, THOMAS B.**, capitalist, res. on the Mesa, near Punta del Castillo.  
**DICKSON, J. F.**, plumber (with Belt & Co.), res. Chapala st., bet. Gutierrez and Haley.  
**DIEM, MISS CLARA M.**, teacher in First Ward School, res. Anacapa st., bet. Montecito and Gutierrez.  
**DIEM, FREDERICK**, shoemaker, (with Chislett & Sons), res. Anacapa st., bet. Montecito and Gutierrez.  
**DIEM, JOHN F.**, clerk, (with Austin & Trenwith), res. Gutierrez st., bet. Anacapa and Santa Barbara.  
**DIEM, MISS MARY T.**, book-keeper, (with Austin & Trenwith), res. Anacapa st., bet. Montecito and Gutierrez.  
**DIETHORN, CHARLES**, gardener, res. W. cor. Pedregosa and Santa Barbara sts.  
**DILLARD, R. M.**, Superior Judge, office, Judge's Chambers in Court House, res. 601 State st.  
**DIMMICK, Mrs. ELIZA J.**, res. 1232 De la Viña st.  
**DIMMICK, Mrs. M. S.**, artist, res. Garden st., bet. Valerio and Arrellaga.  
**DIMOCK & McGARVIE**, real estate agents, office 611 State st.  
**DIMOCK, DR. H. C.** (of Dimock & McGarvie), res. E. cor. De la Guerra and Castillo sts.  
**DINKLEMAN, H.**, carpenter, res. Carrillo st., bet. State and Chapala.  
**DINSMORE, G. N.**, carpenter, (with H. J. Burdick).  
**DIVEN, O. R.**, Superintendent Citizens' Street Railway Co., res. Morris House.  
**DIXON, L. J.**, photographer, at Ren's Gallery, res. S. cor. State and Haley sts.  
**DOAN, GEO. D.**, (of Doan & Caudy,) res. 418 Chapala st.

# READ THIS

The California Central Railway Co. has established a freight and passenger office at No. 637 State Street, Santa Barbara, and now has on sale a complete line of coupon tickets to ALL POINTS in the United States, Canada, Mexico and Europe, at the very lowest rates.

The Santa Fé Route is the "*all year around route.*" It has a mild temperature, free from snow during winter months, while its cool mountain atmosphere makes it a favorite route in summer. The Santa Fé Co. has the direct line to and via Pasadena, Hotel Raymond, San Bernardino, The Needles, The Grand Cañon of the Colorado, Cañon Diablo, Ancient Cliff Dwellings and Aztec Ruins of Arizona, the City of Santa Fé, Glorieta Pass, the renowned Las Vegas Hot Springs, and the luxurious Phoenix Hotel, the charming and beautiful Rio Grande Valley and River, Raton Pass and Tunnel, the Spanish Peaks, Trinidad, Purgatory River, Grand Cañon of the Arkansas, Royal Gorge, Pike's Peak, Manitou, Garden of the Gods, Colorado Springs, Arkansas Valley, Topeka, Kansas City, Chicago, St. Louis, <sup>and all points eastward.</sup>

The Santa Fé Route runs through cars from the Pacific Coast to Chicago without change. This is the line that suits the hurrying business man, the health seeking invalid, or the pleasure seeking tourist.

This "Great Middle Route" has no equal in smoothness of track, elegant equipment, diversity of landscape, regularity of time and certainty of connection. Passengers via this line can rely on quicker time and less changes of cars than via any other route.

Magnificent Pullman Palace Sleeping Cars run daily from Pacific Coast to Missouri River without change. Solid vestibule trains from Missouri River to Chicago, St. Louis, New York and Boston.

New Tourist Sleeping Cars from Los Angeles to Kansas City and Chicago daily without change. Parties holding second-class tickets via this line can have berths in Tourist Cars *free of charge.*

Information regarding routes, rates, etc. cheerfully and accurately furnished at the office of the Santa Fé Route, No. 637 State St., Santa Barbara, Cal.

**JOHN L. TRUSLOW,**

General Agent.

**H. B. WILKINS**

G. F. & P. A., Los Angeles, Cal.

**C. W. RASEY,**

Ticket Agent.

SEE TELEPHONE NUMBER 97.60

DOAN & CANDY, Job Printers, Commercial Printing House, 519 State st.  
 DOBUE, E. G., shoemaker, (with Chauncey Whitney), res. Chapala st., bet. Gutierrez and Haley.  
 DOBNA, PHILIP, carpenter, (with H. J. Burdick), res. E. cor. De la Guerra and Bath sts.  
 DOHERTY, JOHN J., blacksmith, (with Hunt. Son & Schuster), res. Cota st., bet. State and Olupala.  
 DOMINGUEZ, ALFREDO, laborer, res. Cañon Perdido st., bet. Santa Barbara and Garden.  
 DOMINGUEZ, ALFREDO, painter, res. E. cor. Carrillo and Santa Barbara sts.  
 DOMINGUEZ, CARMEN, laborer, res. Cañon Perdido st., bet. Santa Barbara and Garden.  
 DOMINGUEZ, MRS. ESTELA, domestic, res. E. cor. Carrillo and Santa Barbara sts.  
 DOMINGUEZ, FRANCISCO, Sr., ranchero, res. E. cor. Carrillo and Santa Barbara sts.  
 DOMINGUEZ, FRANK, hostler, res. E. cor. Santa Barbara and Carrillo sts.  
 DOMINGUEZ, HERNUNDO, ranchero, res. E. cor. Carrillo and Santa Barbara sts.  
 DOMINGUEZ, MRS. ISABEL, res. Santa Barbara st., bet. Ortega and De la Guerra.  
 DOMINGUEZ, JOSE, (aged 96 years), res. Cañon Perdido st., bet. Santa Barbara and Garden.  
 DOMINGUEZ, MRS. JOSEFA, dressmaker, res. Cañon Perdido st., bet. Santa Barbara and Garden.  
 DOMINGUEZ, MISS MARIA, dressmaker, res. Cañon Perdido st., bet. Santa Barbara and Garden.  
 DOMINGUEZ, MARTIN, laborer, res. Cañon Perdido st., bet. Santa Barbara and Garden.  
 DOMINGUEZ, NICOLAS, hostler, res. E. cor. Santa Barbara and Carrillo sts.  
 DOMINGUEZ, PEDRO, vaquero, res. De la Guerra st., bet. Santa Barbara and Garden.  
 DOMINGUEZ, ROMULO, laborer, res. E. cor. Carrillo and Santa Barbara sts.  
 DOMINGUEZ, SELIN, gardener, res. De la Guerra st., bet. Santa Barbara and Garden.  
 DONAHUE, J. H., laborer, (with S. P. R. R. Co.), res. railway station.  
 DONNELLY, MRS. ANNIE, nurse, res. 1733 Garden st.  
 DONOHUE, WILLIAM J., stone cutter, res. Carrillo st., bet. De la Guerra and Bath.  
 DONOHUE, DR. A. BOYD, capitalist, res., 1219 Santa Barbara st.  
 DOWSEY, MRS. W. M., res. 327 Carrillo st.

DOTTA, JOSE, laborer, res. Canal st., bet. Figueroa and Carrillo.  
 DOTY, JAMES, barber, res. Gutierrez st., bet. Santa Barbara and Anacapa.  
 DOULTON & HINSDALE, commission merchants, 616 State st.  
 DOULTON, G. H., (of Moore & Doulton), res. Montecito.  
 DOULTON, H. J., (of Doulton & Hinsdale), res. 616 State st.  
 DOULTON, JOSTAN, stenographer, office 616 State st., res. Montecito.  
 DOVE, NOAH H., hostler, res. 1214 Anacapa st.  
 DOVER, DANIEL, laborer, (with Santa Barbara Lumber Co.), res. Yanouali st., bet. Quarantina and Nopal.  
 DOVER, JOHN, (with Edwards & Boescko), res. Yanouali st., bet. Quarantina and Nopal.  
 DOVER, JOHN, laborer, res. Montecito st., bet. State and Chapala.  
 DOVEN, JOSEPH, stone mason, res. Yanouali st., bet. Quarantina and Nopal.  
 DOVER, WILLIAM, JR., res. Yanouali st., bet. Quarantina and Nopal.  
 DOVER, WILLIAM, SR., res. Yanouali st., bet. Quarantina and Nopal.  
 DOW, E. J., painter, res. E. cor. Gray Avenue and Montecito st.  
 DOW, JAMES, capitalist, res. S. cor. Castillo and Micheltona sts.  
 DOWELL, RICHARD, lather and contractor, res. 226 State st.  
 DOWNS, D. D., carpenter, (with H. J. Burdick), res. De la Villa st., bet. Cota and Ortega.  
 DOYLE, JAMES, bar-keeper, at Morris House Saloon, res. State st., bet. Montecito and Gutierrez.  
 DUANE, J. B., tinner, (with Roeder & Ott), res. N. cor. De la Guerra and Bath sts.  
 DUANE, MRS. M. P., res. Santa Barbara st., bet. Figueroa and Anacapa.  
 DREYFUS, ISADORE, ranchero, res. 124 W. Victoria st.  
 DREYFUS, LOUIS G., (of Cooper & Dreyfus), res. 2036 Anacapa st.  
 DROUGHT, FRANK, head writer at San Marcos Hotel, res. same.  
 DUBLOIS, JOHN, carpenter, res. 73 Cota st.  
 DUDDER, ALFRED B. G., carpenter, res. 713 Bath st.  
 DUFF, MRS. M. A., proprietor Santa Barbara House, res. same.  
 DUFFY, N. P., veterinary surgeon, office and res. Hanley st., bet. Santa Barbara and Garden.  
 DUGAN, MISS MARY, crayon artist, res. W. cor. Pedregosa and San Pascual sts.  
 DUDDALE, GEORGE, res. 1335 Chapala st.  
 DUDDALE, MRS. GEORGE, private boarding house, 1335 Chapala st.  
 DUNSHEE, FRANK M., (of Rowley & Dunshee), res. 208 Micheltona st.  
 DUPUY, MRS. ELENA, res. Carrillo street, between Anacapa and Santa Barbara.  
 DURBAN, JOHN, painter, and glazier, res. Milpas st., bet. Montecito and Gutierrez.

- DUNFEE, E. C., stock and real estate dealer, res. S. cor. Islay and Anacapa sts.  
DUTTON, J. R., carpenter, res. 1505 San Paeonal st.

## E.

- EALAND, MRS M., res. Garden st., bet. Haley and Gutierrez.  
EALAND, WILLIAM, (of Sherman & Ealand), res. 621 Chapala st.  
EARLEY, BERNARD, (of Wenles & Earley), baker, State st., res. same.  
EAVESON, L., starcher in American Laundry, res. Park Hotel, State st.  
EAYEN, JOHN, watchmaker and jeweler, 933 State st., res. same.  
EBERLE & LOWE, blacksmiths and general iron-workers, Cañon Perdido st., bet. State and Chapala.  
EBERLE, W. H., (of Eberle & Lowe), res. Anapamu st., bet. Garden and Laguna.  
ECKLAND, CHARLES, truckman, (with W. A. & T. S. Hawley.)  
EDDLEMAN, J. J., harness and saddlery, 730 State st., res. Montecito.  
EDULKMAN, THOMAS J., res. Castillo st., bet. Solo and Micholtorena.  
EDDY, WM M., President Santa Barbara County National Bank, res. west of Mission st., near Castillo.  
EDINGER, ACHILLE, clerk, (with A. Frisins & Co.), res. 601 State st.  
EDMONDSON, MISS EMMA F., teacher in Mission Cañon School, res. De la Viña st., bet. Gutierrez and Haley.  
EDWARDS & BOESEKE, dealers in hardware, stoves, etc., 710 and 712 State st.  
EDWARDS, A., book-keeper in S. B. County National Bank, res. W. cor. Anacapa and Solo sts.  
EDWARDS, CHAR. A., assistant cashier in S. B. County National Bank, res. W. cor. Santa Barbara and Islay sts.  
EDWARDS, GEO. F., bricklayer, res. 335 W. Haley st.  
EDWARDS, GEORGE S., clerk, (with Edwards & Boescke,) res. Santa Barbara st., bet. Valerio and Islay.  
EDWARDS, JOHN, (of Edwards & Boescke), res. W. cor. Anacapa and Solo sts.  
EDWARDS, SAMUEL, (of Edwards & Boescke), res. W. cor. State and Valerio sts.  
EELLS, HOWARD K., clerk in First National Bank, res. 1424 Garden st.  
EELLS, MRS. MAURUS, res. 1424 Garden st.  
EHAT, A. A., (of Judd & Ehat), res. Gutierrez st., bet. State and Chapala.  
EINTEU, MISS JULIA, dressmaker, res. State st., bet. Valerio and Islay.  
EKENDORFF, B., lineman in S. B. Electric Light and Power Co., res. at the works.

- ELDRNO, A., capitalist, res. 1204 De la Viña st.  
ELIASSEN, SAMUEL, dealer in boots and shoes, 527 State street., res. Lawrence House.  
ELIZALDE, FRANCISCO, ranchero, res. Santa Barbara st., bet. De la Guerra and Cañon Perdido.  
ELIZALDE, J. J., capitalist, res. Santa Barbara st., bet. De la Guerra and Cañon Perdido.  
ELLIOTT, E., contractor and builder, res. W. cor. Anacapa and Gutierrez sts.  
ELLIOTT J. V., (of Channel City Mills), res. W. cor. Anacapa and Gutierrez sts.  
ELLIOTT, Miss M. A., teacher in First Ward School, res. W. cor. Anacapa and Gutierrez sts.  
ELLIOTT, R. E., carpenter, res. W. cor. Anacapa and Gutierrez sts.  
ELLIS, CAPTAIN GEO. F., President of the S. B. Transfer Co., res. E. cor. De la Viña and Micholtorena sts.  
ELLIS, HENRY M., ranchero, res. San Marcos Hotel.  
ELMER, GASPAR, night watchman at the Arlington, res. Santa Barbara st., between Carrillo and Cañon Perdido.  
ELY, MISS ABBIE F., res. E. cor. Bath and Arrellaga sts.  
ELY, F. R., carpenter, with R. J. Hurdick.  
EMERSON & Co., boots and shoes, 716 State st.  
EMERSON, D. W., (of Emerson & Co.), res. on Hurton Mound.  
EMERSON, F. N., (of Emerson & Co.), res. in block 155, between Garden and Santa Barbara sts.  
EMERY, J. M., contractor and builder, Haley st., bet. State and Chapala, res. 217 California Avenue.  
EMERY, CHARLES, driver for S. B. Transfer Co.  
EMICH, A. H., undertaker, 630 State st., res. E. cor. Castillo and Ortega sts.  
EMICH, MISS LONEMA, dressmaker, res. E. cor. Castillo and Ortega sts.  
ENIN, FOSTON, laborer, res. Haley st., bet. Quarantina and Nopal.  
ESPINOSA, MISS BEATRICK, domestic, res. Garden st., bet. Cañon Perdido and Carrillo.  
ESPINOSA, MISS DORALIZA, domestic, res. Garden st., bet. Cañon Perdido and Carrillo.  
ESPINOSA, MRS DULCINA, domestic, res. Cañon Perdido st., bet. Garden and Laguna.  
ESPINOSA, EDUARDO, laborer, res. Garden St., bet. Cañon Perdido and Carrillo.  
ESPINOSA, FRANCISCO, butcher, res. Cañon Perdido st., bet. Garden and Laguna.  
ESPINOSA, Gaspar, laborer, res. Garden st., bet. Cañon Perdido and Carrillo.  
ESPINOSA, JOAQUIN, laborer, res. Garden st., bet. Cañon Perdido and Carrillo.

## SURNAME INDEX

This index does not include The Seed Bed, New in the SBCGS Library, 1888 Santa Barbara City Directory.

Abernathy.....	53	Garolan .....	57	Musselman .....	45
Alvarado.....	54	Gleason.....	61	Ord.....	56
Anderson.....	53	Glennen.....	61	Orena.....	56,57
Arellanes .....	53	Hamer.....	44,45	Ortega.....	56
Bancker .....	61,62	Hardy.....	57	Parrott.....	57
Behrens .....	61	Hart.....	56,57	Peed.....	44
Belt .....	44	Hartnell.....	56	Peer.....	45
Booth.....	43,44	Hay .....	43	Poett.....	54,56,57
Boulton.....	42	Hegerich.....	61	Redington.....	57
Broughton.....	44	Hollister.....	54	Robinson.....	56
Cannon .....	61	Howard.....	57	Russell.....	56,57
Carrillo .....	56	Hunt.....	45	Sepulvedo.....	56
Christman.....	53	Jenkins.....	44,45	Sepulvido .....	56
Coa .....	61	Jimeno.....	56	Show .....	45
Coulter.....	43	Lagomarsino .....	51	Stratton.....	53
de la Guerra.....	54,56,57	Lansdale .....	57	Summers.....	56,57
de la Guerra y Noriega.....	54	Lataillade.....	56	Tillford.....	44
Dibblee .....	54,56,57	Lee.....	56	Underhill .....	56,57
Dunbar.....	53	Leroy .....	53	Wakefield.....	57
Edwards.....	57	Macfarlane .....	44,45	Waller.....	53
Fern.....	44	Maloney.....	61	Warren .....	44,45
Fewkes.....	44	McGrath.....	61	White.....	45
Franke.....	51	Meecham.....	57	Williams .....	57
Franklin .....	53	Menzel.....	50,51	Wilson.....	57
Friel.....	44	Moore.....	43	Wood.....	57
Fyler.....	57	Moreno y Castro.....	56		

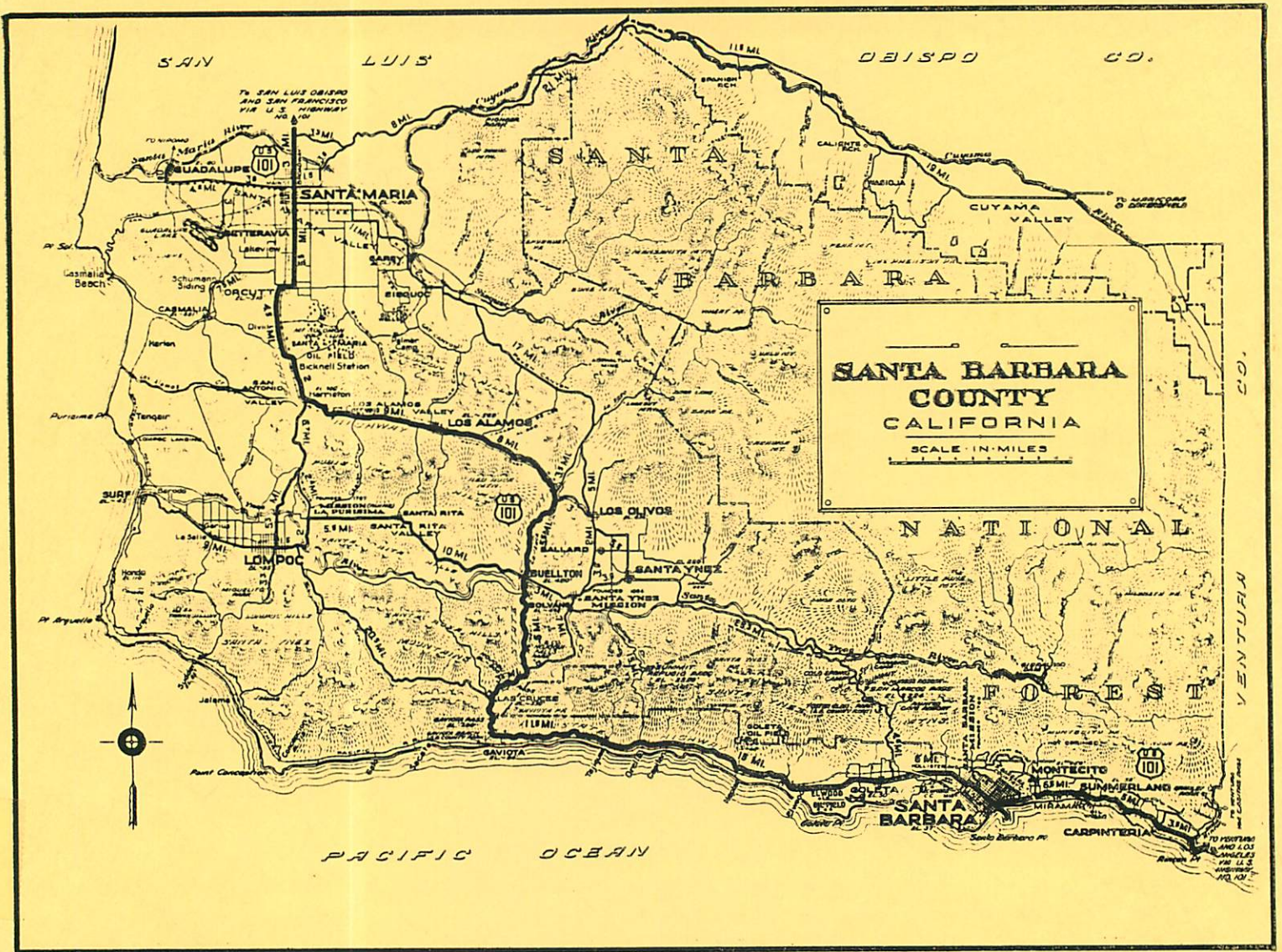
Deadlines for submission of articles for Ancestors West: January 15 for March issue; April 15 for June issue; July 15 for September issue; October 15 for December issue.

### DO YOU HAVE AN ESTATE PLAN?

Have you thought about providing support for the Santa Barbara County Genealogical Society in your estate plan? Such gifts are deductible for state and federal tax purposes and will be very beneficial to the society. They may be large or small, but any amount will be appreciated.

Our society will provide at no charge a qualified attorney to assist you in remembering the society in your estate plan. For a gift that will last forever, remember us.

For information, phone (805) 967-8954.



SANTA BARBARA COUNTY

One of California's 27 original counties. While the county was actually created in 1850, the history of the area dates back to 1542. In that year Juan Cabrillo discovered the Santa Barbara Channel and later, according to legend, crossed to San Miguel Island where he died and was buried. A second Spanish explorer, Sebastian Vizcaino, entered the channel on the Feast Day of Saint Barbara in 1602, and named the area accordingly. Fr. Fermin Francisco de Lasuen founded the Santa Barbara mission in 1786. Santa Barbara Royal Presidio, established April 21, 1782, by Fr. Junipero Serra, was the last of four royal presidios in Alta California - San Diego, Monterey, San Francisco, and Santa Barbara. Santa Barbara had all three Spanish forms - Presidio representing the military, Pueblo, the civil, and Mission, the religious. In 1873, Ventura County was established from the southern portion of the original Santa Barbara area.

SANTA BARBARA COUNTY GENEALOGICAL SOCIETY  
 P.O. BOX 1303  
 Santa Barbara, CA 93116-1303

NON-PROFIT ORGANIZATION  
 U.S. Postage Paid  
 Santa Barbara, CA  
 Permit No. 682

Forwarding & Return  
 Postage Guaranteed

MARSHA MARTIN  
 629 ARUNDEL RD  
 GOLETA  
 CA 93117