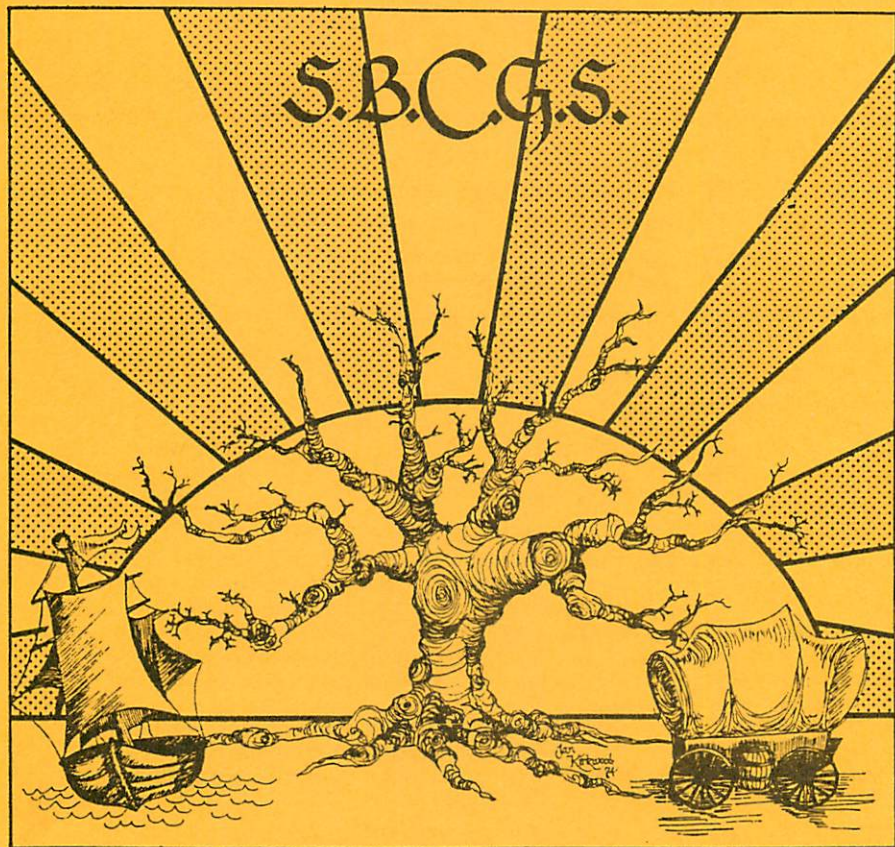


# Ancestors West

VOL. 13 No. 4

December, 1987

Whole No. 53



“Today weds yesterday  
with tomorrow for continuity.”



SANTA BARBARA COUNTY GENEALOGICAL SOCIETY  
P.O.Box 1303 Goleta, CA 93116-1303  
1987-1988 OFFICERS, DIRECTORS, COMMITTEES

		Phone
President	KENNETH MATHEWSON	967-2220
Vice-President (Program)	JANICE GIBSON CLOUD	965-7423
Second Vice-President (Membership)	OLIVE FRANKLIN	968-2208
Treasurer	Oct 1987 Appointee JULIA CARR	965-4314
Recording Secretary	ARLENE DOTY	968-1162
Corresponding Secretary	LINDA RICHMOND	963-5411

DIRECTORS - 1987

MARILYN OWEN 962-7984 JANICE CLOUD 965-7423 DOREEN DULLEA  
CHERYL JENSEN 966-2614 969-3935  
LIBRARIAN RUTH BROOKS SCOLLIN EDITOR LILIAN MANN FISH

PARLIAMENTARIAN HAROLD THELIN 687-5494

1987 COMMITTEES - CHAIRMEN

Hospitality RUTH TAPPER Education PATRICIA CASE Sales GRACE EKVALL

Fund Raising CECILIA SPENCER Research HELEN RYDELL

TRAVEL (Bus) AUDREY GUNTERMANN, LORRAINE LAABS

Surname Index Cards CAROL HAMILTON Publicity (Not Filled)

Book Committee EMILY PERRY THIES LURA DOLAS JANICE CLOUD

Library Committee DORIS CRAWFORD, HELEN AND MORTON NOBLE, MARIE  
LaBRECHE, HILDRED ALLEN AYERSMAN

ANCESTORS WEST Editor Lilian Mann Fish Asst. Editor Carol Fuller Kosai

PAST PRESIDENTS \* indicates deceased

Janice Gibson Cloud	1985-1986	Bette Root (now Kott)	1980
Doreen Cook Dullea	1984	Mary Ellen Galbraith	1978
Norman E. Scofield	1983	Carlton M. Smith	1977
Harry W. Titus	1978-1982	Selma Bankhead West	1975-1976 *
Emily Perry Thies	1981	Harry R. Glen	1974-1975
	Carol Forbes Roth	1972-1973	

ANCESTORS WEST

is published quarterly in March, June, September and December.  
Single copies of current and back issues \$2.00, depending on availability, plus cost of mailing. Contributions of a genealogical, historical or family interest nature will be accepted as space allows and are solicited. Queries are encouraged. The Society assumes no responsibility for services or work undertaken by members, advertisers or contributors.

MEMBERSHIPS: Active, \$15., Family \$20., Friend \$25., Donor, \$50., Patron \$100. Dues are for calendar year, payable by January 1. Family Membership includes 1 subscription to the quarterly, ANCESTORS WEST and the Newsletter, TREE TIPS.

REGULAR MEETINGS Second Saturday of each month, 10:30 a.m., usually in large rooms at Goleta Community Center. Library open Thursdays 10:15 a.m. to 3:15 p.m. and on regular meeting days. Library location - Room 8, Goleta Community Center, 5689 Hollister Avenue, Goleta, California.

ANCESTORS WEST ISSN 0734-4988

## TABLE OF CONTENTS

	Page
PRESIDENT'S MESSAGE Ken Mathewson	146
MEMBER PROFILES Cecilia Spencer Patricia Case	147
GENEALOGY BY MAIL - WHAT WORKS FOR ME Nadine Gauthier Heppell	148-149
PUBLIC LIBRARY PURCHASE Revolutionary Census, New Jersey	149
PERSONAL HISTORY -Adella Scott Fuller as Told to Dau- ghter AnneVerne, Carol Fuller Kosai	150-154
WHO WAS "TOTTIE"? Margaret Shanholtzer	155-156
DONATION of 1974-1977 ANCESTORS WEST by Joseph T. Whalen to Olympia Genealogical Society Library	156
SURNAME PUBLICATIONS - COLTON CLARION- JOHNSON FAMILY GROUP SHEETS	156
ANCESTOR TABLE - CHART 57 Doris Batchelder Crawford	157-163
SPECIAL INTEREST GROUPS	163
QUERIES	164-165
Research Aids	
FAMILY RESEMBLANCE - PHYSICAL FEATURES	166
FAMILY MEMENTOS	167
FAMILY HOMES Contributed by	168
LOCAL RECORDS Lilian M. Fish	169
LOCATIONS ABROAD as suggestions for research	170
	171
THE SEED BED, A Column of Local Sources Marilyn Owen	172-173
WOMEN IN THE AMERICAN REVOLUTION Continued	174-177
SBCGS LIBRARY TAPES Hildred Ayersman	178-179
AREAS OF GEOGRAPHIC INTEREST EXPRESSED	179
BOOK REVIEW Atlas of Boundary Changes, Virginia 1634-1895	179
SANTA BARBARA COUNTY MARRIAGE RECORDS 1914, 1915 Transcribed by Doris Crawford	180-183
SURNAME INDEX CARDS available from Carol Hamilton	183
NEW IN THE LIBRARY Ruth Brooks Scollin, Librarian	184-186
VOLUNTEERS NEEDED PLEASE DISCLOSE YOUR INTERESTS AND ABILITIES and TIME WHEN AVAILABLE.	186
Especially needed - volunteer to abstract issues of ANCESTORS WEST for FAMILY HISTORY NEWS AND DIGEST	

\* \* \* \* \*

Contributions of books, pamphlets, periodicals for  
SBCGS Library will be reported in NEW IN THE LIBRARY  
section and are tax deductible. Recommendations for  
purchases of books are to be made to the BOOK COMMITTEE.  
Contribute to the HALF AND HALF BOOK BUY PROGRAM. Arti-  
cles and Ancestral Charts for ANCESTORS WEST solicited.

SUBMIT QUERIES

VOLUNTEER SERVICES

MAKE SUGGESTIONS

Santa Barbara County Genealogical Society  
P. O. Box 1303 Goleta CA 93116-1303

## PRESIDENT'S MESSAGE

Ken Mathewson

In order to include the results of our election, submission of the December ANCESTORS WEST until after the November 14th meeting has been decided upon. Also we wanted to give Ruth Scollin, our Librarian, a little more time after returning from a visit to Massachusetts and other places including Colonial Williamsburg in Virginia to check cards and acquisitions in the Library since publication of the September ANCESTORS WEST, to prepare her NEW IN THE LIBRARY.

THE October 10th GERMAN RESEARCH SEMINAR - RESOURCES IN UNITED STATES AND ABROAD, led by Michael Palmer, Archivist of Claremont, California, and Chairman of the Resource Committee of the German Genealogical Society of America, was attended by about one hundred people and proved to be extremely interesting and informative. Many, many copies were made from the books he brought for reference purposes. A most rewarding experience! Several new members gained.

Speaking of new members, our society has more than doubled in number of members in the last year or so. The response to the request for expression of locality and other topical interests has been so satisfying that at the November meeting, little slips are being passed out relating to Geographical Areas or Regions of interest. The idea is to take advantage of the many offers to volunteer in organizing Special Interest Groups, and by sampling those actually in attendance at a regular meeting, and get started with perhaps several area-interest groups. Doreen Dullea's pre-meeting class for beginners necessarily is limited to 12 - 15 in number and not open to more experienced genealogists. How about some more groups? What would you like? Let me know if you have not already filled in slips.

Attention should be called to the change in Society Library hours. They are Thursdays from 10:30 a.m. to 3:30 p.m., with closing up starting about 3:15 p.m. Will not be open during Thanksgiving week. Also open after the regular meeting on the second Saturday of the month. Are you interested in an evening opening? Or in volunteering your services?

The Newsletter has a name- TREE TIPS. Bea McGrath does a great job on that. So many interesting tidbits. The September issue was mailed inside ANCESTORS WEST. The copy received by the Santa Barbara Historical Society Librarian brought extremely favorable comment to our Editor.

Remember to bake your goodies to be sold at the December 12th meeting. Proceeds will benefit the Book Fund. Also available for Christmas gifts will be Lemon Labels, place mats, rare citrus labels, collector labels, framed labels and hard laminated labels.

We deeply regret that changes in work hours and responsibilities preclude Harry Glen from completing his two-year term as Treasurer. The Board has appointed Julia Carr to serve the balance of the term. Newly elected officers are Janice Cloud, Vice President, who serves as Program Chairman as well; Arlene Doty, Recording Secretary and Linda Richmond, Corresponding Secretary.

## MEMBER PROFILES

CECILIA SPENCER is known to most of us as the person who sells raffle tickets at our meetings, with the winning ticket getting a free bus trip to Los Angeles. Cecilia was born in Kenosha Co. WI, in 1920. She grew up in So. WI on the shores of Lake Michigan where she did a lot of boating and sailing. She came to CA for college at USC in 1941, because she thought it was on the beach. Check a map - LA is on the beach.

She married William Spencer. They have five children and ten grandchildren. Grandchildren take up most of her extra time, but she does enjoy leatherwork as well as genealogy.

Like other members, she typed information from her grandparents that was mildly interesting. It was after everyone was gone that her interest blossomed. This was triggered by very old letters in her husband's family. Cecilia and William have had very successful trips to England and the Northeastern US.

Families of interest to Cecilia include:

EWEN [EWEN] - Ozaukee Co., WI - 1865 (paternal)  
 WILTYEN - Ozaukee Co., WI - 1860  
 PIRSCH - Kenosha Co., WI - 1850  
 RITTER - Cook Co.?, IL - 1867

PATRICIA CASE helps the society by arranging and presenting special education programs, such as beginner seminars. She was born in Kansas City, MO and discovered in her later research something she had felt along - the family had lived in the area forever (well 150 years). She moved to Gardena at age 12, came to Santa Barbara to attend UCSB and stayed here.

She taught science at Dos Pueblos High and didn't have time for genealogy until she left that job. Now it is an all consuming interest she can pursue at last. She was always curious about family history and listened to her grandparents stories eagerly. Now Pat even has the time for the Smith-McCray Family Newsletter, which she publishes twice a year and is celebrating its' fifth birthday in December.

Some family lines that keep her busy:

CASE - Long Island, NY -1654  
 SUMMERS - Menard Co., IL - 1826  
 SMITH - Rowan Co., NC - 1754  
 ODELL - Concord, MA -1635  
 HEISEL - Ray Co., MO - 1850  
 TILSON - Plymouth, MA - 1634

## GENEALOGY BY MAIL - WHAT WORKS FOR ME!

by Nadine Gauthier Heppell

Since current financial resources and family and job commitments do not allow me the opportunity to travel the U.S. to do on-site research, or allow me to get to some of the wonderful genealogy research libraries, I have learned to use the U.S. Postal Service to do my family research, and it works well for me! To help you get started, I recommend:

HANDBOOK FOR GENEALOGICAL CORRESPONDENCE by Cache  
Genealogical Library, Logan, UT, The Everton Publishers.

THE SOURCE A Guidebook of American Genealogy by Arlene  
Eakle and Johni Cerny.

THE HANDY BOOK FOR GENEALOGISTS by Everton Publishers

THE GENEALOGICAL HELPER published bi-monthly by Everton.

LEARN TO TYPE! Write concise letters, asking only one or two questions. Always make a copy of your letter, and keep it in an "OUT MAIL" file until you get a response. If no response in 6-8 weeks, photo-copy the copy you saved, and send a reminder note - this usually gets a response. Attach response letter to your copy when it comes in, and keep it in your "IN MAIL" file until you have completed any needed follow-up to that response. Get yourself a name/address stamp, and use it on everything you send out. Always include a LARGE SASE in your initial correspondence with another family researcher. I also include a 5-generation ancestor chart, and at least one family group sheet showing the ancestors I am inquiring about. Ask everyone you contact if they will send you names/addresses of others searching that particular surname - then WRITE to EVERY name you receive. Keep a list of all who are researching a particular surname, and share that list with others. In this way you build a network that may continue to aid you for years to come.

WHERE TO WRITE (do not send money, but ask what the fee will be for search and photo-copies):

## GENEALOGY BY MAIL

1. Look at the dates on your ancestor charts - use NATF Form 80 from the National Archives to inquire for Civil War records on all your men who lived in that time period and MAY HAVE served. I request pension file first - it contains the most genealogical information.
2. Write to all FREE offers to print queries (newspaper genealogy columns, society newsletters, etc.).
3. Write to the REFERENCE LIBRARIAN of locality library and ask her to check newspaper files for obituary of your ancestor (provide EXACT death date).
4. Write CORRESPONDING SECRETARY of the genealogical society in the locality you are searching and ask for a list of others who are searching your surname. Submit your list of names to be added to that society's files.
5. Write to PROBATE CLERK and inquire if there are any testate or intestate probate files for your ancestor (provide EXACT death date); inquire page and book number of reference, and cost of copies.

ANSWER ALL YOUR MAIL! Share equal amounts of photocopies with your correspondent, or offer to reimburse for copies. The more you share, the more that comes back to you. I continue to get good results through correspondence, it really works for me!

\* \* \* \* \*

## PUBLIC LIBRARY PURCHASE

Early in September, a reference librarian at the Santa Barbara Public Library called the Editor's attention a new purchase- REVOLUTIONARY CENSUS OF NEW JERSEY, An Index, Based on Rateables, of the Inhabitants of New Jersey during the Period of the American Revolution. Kenn Stryker-Rodda, Hunterdon House, Lambertville NJ 08530, 1986 a Reprinting of Dr. Stryker-Rodda's highly useful compilation. The publisher's preface calls attention to the change to Mr/ie as the coding for Nebdgan Township, Morris County, in the earlier edition given as MrM - over 400 entries in that township were corrected. The Public Library also has NEW JERSEY in 1793, James S. Norton, 515 pp. with a map of New Jersey, with insets for Newark and Jersey City On the inside back cover is a map showing changes in county lines 1790 and 1900

## SCOTT

This personal history of her Greatgrandmother [Adella Alcesta Scott b. 7 September 1869, d. 14 June 1942, m. 25 March 1887, Earl Reuben Fuller, b. 21 June 1861, d. 11 September 1949] submitted by Carol Fuller Kosai.

Personal History by Adella Scott Fuller  
Told to her daughter, Anne Verne

My father was born in Canada, near Ottawa. He was the eldest of five children, Job, Sarah, Enos, and Charity. I don't know how old father was when his mother died. He went to live with his uncle, and after his father married again, when my father was 12 years old, he ran away from his uncle and walked from Canada to Michigan where Grandfather lived. Grandmother told me that when he got there he knocked on the door. She went to the door and there stood a small barefoot boy with his feet so sore they were bleeding. He asked if Adam Scott lived there. Grandmother said he did. Father said, "Well where is father?" and burst out crying.

Grandmother was own sister to my father's mother, and was only 17 years old when her sister died and she went to keep house for grandfather. She soon married him and had five children of her own. Walter, Hattie, Rhoda, Fred and Dora. They lived on a farm on Muskegon river, and after Grandfather died, when I was about 2 years old, grandmother traded the farm for a house in Holton where she lived for many years after bringing up all ten children.

I don't know much about my father's early life. He had a varied life following the lakes. After he married my mother, they lived in Marine City for a while, where my mother was born and lived when she was married. Later they came to Muskegon County and lived at Minnie Mills on Sand Creek, not far from Fremont where father worked in a sawmill. Later they moved to Whitehall where father was what they called head sawyer and filer. My brother Albert was a tiny baby when the came from Marine City to Muskegon County.

While living in Whitehall my brother Frank was born. Frank must have been about a year and a half old when they bought a farm five miles north and west of Holton. This is where I was born and lived until I was eight years old. Rufe Skeels had a small mill on what they called Skeels Creek. Father and mother kept what they called "Shanty" fir Skeels". Then they used to keep the men who worked on the rollway, where they used to haul the logs and pile them in great big piles on the river bank. In the spring they put the logs in the river and sent them down to the mills in Muskegon.

When I was about five years old father's health failed and he was not able to work the farm. Then he got a team and peddling wagon and went all over buying rags, butter, eggs and paying for them in trade mostly from out of the wagon. He carried thread, needles, pins, hairpins, cheap towelling, some calico, ribbons,



## SCOTT CONTINUED

circle combs, beads and tinware. Many strings of beads and circle combs did I have out of that wagon.

When I was eight years old, father got the Western fever. He wanted to go alone to see how he liked the country but mother wouldn't hear of it. So he sold everything he had; gave a power of attorney to what he thought was a good friend of his to sell the farm. The "good friend" beat him out of most everything. So on Nov. 6, 1877 we started for Nebraska where Uncle Walter Scott lived. It took us three days and two nights to get there. We did not have a sleeping car and was a tired lot when we got to Uncle Walters. We stayed at Uncle Walters about three weeks, then Father hired a man with a team and buckboard, which was a two-seated buggy without a box, to take us up into Butter County where Father's cousin, Amos Wright, lived. I will never forget arriving at Amos Wright's. There wasn't anyone at home, but the door was not locked. Father went in and took a picture of Aunt Mercy Wright (Amos' mother) off the wall and brought it out to show mother, so she knew that we had arrived at our journey's end - at least for a time.

They lived in a three room sod house. A corn shelter stood in the middle of the living room and kitchen combined. A great pile of unshelled corn filled one corner, corn cobs were all over the floor, and baskets of shelled corn were standing around. The fire was out in the cookstove and it was a terrible looking place. Mother went in, took a look around and sat down in a chair and cried her heart out. I thought to comfort her and took off my hat and coat, found a broom and tried to bring some order out of the mess.

The family, Amos and Josephine, two big sons of Amos' by a former wife, and two small boys, had gone to the cornfield to husk corn. They used to drive a team and wagon into the field to husk corn, throw the corn into the wagon box and leave the stalks standing. Later on they would cut the stalks down for fodder and for wood to burn in the stove. Sometimes they would cut the stalks stove length, bind them in bundles with fine wire or twine, and burn them in bundles. At other times an armful was dumped on the floor near the stove and you broke them over your knee and kept stuffing them into the stove while someone else was trying to get the meal. We burned lots of corn and cobs too. That was all the fuel we ever had in the three years we lived in Nebraska, and I had to do my share of breaking corn stalks.

We lived for some time in one room of the Wright's house and father worked different places for farmers. The next Spring Father rented a farm on shares and came back to Michigan to settle up his farm troubles. He got a poor old team of horses, a wagon and a dog, (all he ever got out of his farm) and drove back to Nebraska. He worked this farm two seasons and worked on the railroad they were building in slack times of

## SCOTT CONTINUED

farm work. The next fall we came back to Michigan, just three years from the time we left Grand Rapids we landed back in Grand Rapids on Nov. 6, 1880, and glad to be back.

Father and Mother got better health by going out west, and also got a baby girl, my sister Phoebe. We always lived in a sod house while there. The sod house is very warm in winter and also cook in summer. The sods were cut about two feet long and a foot wide and were laid in two tiers for walls. The houses we lived in had windows with casings and floors. Lots of them did not have anything but dirt floors and canvas or paper for windows.

The second year we lived there my father's brother Enos Scott came with his family. They didn't stay very long. They stayed at our place for a while and lived in our granary. Uncle Enos was a good carpenter, also a preacher. He made bunks for beds and a table. We worked wherever he could and preached in school houses on Sunday. They lived in David City for a while where he worked at his trade. But soon we heard they had gone back to Michigan.

Uncle Enos wrote father that he would know enough to stay in Michigan if he ever got back there. His son, Edwin, stayed with us awhile after Uncle Enos came back and Edwin came back on the train just before we started back in a covered wagon. We were six weeks coming from Lincoln, Nebraska to Grand Rapids, Michigan. We had lots of fun coming. We always camped out. My mother, baby sister and I slept at one end of the wagon, Bert and Frank at the other end, father with his gun and Carlo, the dog under the wagon.

Most mornings we would get up as soon as it was light and travel until about ten o'clock. Then stop and cook a breakfast and dinner together, take a good rest, and then travel until sundown, or as long as it was light, or until we found a good camping place. I had scarlet fever on the way. They took me to a doctor somewhere in Iowa. He said keep on going and gave me some medicine. After that was gone they gave me drinks of Davis' Pain Killer - and I lived to tell the story. I was plenty sick. Mother kept me bundled up until I thought I would cook alive, but no one else caught the fever.

After coming back to Michigan we stayed a while at Uncle Enos' in Newaygo then came on to Holton where Grandmother Scott lived. We lived in a little wooden house down near the church and father worked at Wood's mill for a few moths. Then we moved to Evenwood on Turkey Valley, as it was called, where there were two shingle mills. We kept boarding house for Burns and Blythe's Mill. We were there one summer and late fall, then Father bought a house in Holton and the next spring in May my brother Harry J. was born.

Harry was only a few moths old when we moved to

## SCOTT CONTINUED

North Muskegon. We kept boarders again and father and Bert and Frank worked in the mills that lined both sides of the lake. I don't know what mills they worked in, there were so many of them. It was some sight when one of them burned and all the people in North Muskegon were out to watch the fire. It was a noisy place in the morning, too, when all the whistles were blowing.

I went to school in North Muskegon more than any other place. Mother had so much to do that I always had to take care of baby Harry. Prof. Downey was such an old peach that he let me do it, and Harry was a good baby. But it didn't work out so well and after the folks stopped keeping boarders I wanted to have things like other girls, so I quit school and went to work. My schooling did not amount to much. Before going to Nebraska I went to school part of the time. We didn't have school in those days like we do now. I remember that I knew my first and second readers by heart. After we went west school was always so far away that I did not go very much.

We didn't have very bad dust storms while we were there, and almost never any snow. Lots of children never had shoes and went barefoot all year round. The farms there were always large, they called 160 acres a small farm. All the fences that I remember were rows of cottonwood trees all around the farms. I saw lots of prairie fires and stood just petrified with fear while the men fought fire to keep it from burning us out. But it did look beautiful.

When Harry was 3 1/2 years old, father bought some land up near Holton, 3 miles north and 1/4 mile west on Cedar Creek where we lived until the fall before father died. On the first farm I remember, and where I was born, father went to the post office for a while. It was called Hazel Grove. Mail was sent for Whitehall on horseback. I also remember father was Justice of Peace for a while and they had law suits at our house. We children were hushed in the kitchen while they were going on.

## Some of My Earliest Recollections

I think the first thing I can remember was getting burned. It was in the Winter of 1873. Our well had caved in and there was lots of snow. My mother had to melt snow for water for cooking and washing. This day my mother was washing. We had an elevated-oven stove. By that I mean the back legs off the stove were perhaps 2 1/2 feet high and held the oven. The front legs were about a foot high and held the fire box with two doors opening on a low hearth.

Mother had a big dish pan of snow on the stove. While she was outdoors hanging up the washing, my brothers Bert and Frank stood on each side of the stove and I in front, eating snow out of the pan. My skirts were just right to rest on the low hearth and the

## SCOTT CONTINUED

flames drew my dress into the fire box. All at once I was in flames. My brothers and I began to scream and my mother rushed in. I can see her now, just how she looked as she stood for a second in the door. She had a black and white shawl over her head. Her eyes fairly stood out. She threw up her hands and said "Oh my baby!" I was just 3 years old, my brother Frank five and Bert, seven.

I remember my mother grabbing me and tearing my clothes off. I can still hear the buttons hitting the floor as she tore off my clothes. I remember her wrapping her skirts around me and slapping me with her hands and then finally rolling me over and over on the floor still slapping me until the fire was all out.

We lived in the country and there was a doctor whose farm joined ours. The Doctor was in his wood lot cutting wood. Mother bundled up my seven-year old brother and started him after the doctor. She told him to keep calling Dr. Wells. The snow was so deep and Bert's legs so short that he did not get very far, but the Doctor heard him calling and came on the run, picking Bert up and putting him on his back.

When Dr. Wells came he went to the bed and took a case off the pillow, then went to the flour barrel (everyone had a flour barrel in those days), and tilled the case part full of flour. He put my arm in the case and tied it around my neck. All the flesh on my arm was cooked and fell off in chunks. My face was blistered and all my hair, eye lashes and eye brows were gone. I only remember one other thing about this incident. My father was going to hold me while the doctor dressed my arm. When the doctor took my arm out of the flour my father took one look and fainted. Poor mother, with her hands all blistered inside and out, had to come to the rescue and hold me. I don't remember anything about the pain.

There was a small mill on a creek not far from where we lived. And I remember that there were always boarders at our house. The men had teams of big horses and they hauled logs to the rollway on White River. The mill was Skeels Mill and the creek was called Skeels creek.

One time Frank had a new pair of boots of which he was very proud and every little while he would take his handkerchief and wipe the dust off them.

We went to school to the Anis School that was only a little way from our house. The teachers used to board around, a week at a place in the district and it was always a big event when she came to our house. Finally the last year or two we lived there the teacher stayed at our house all the time. I remember my father always had a horse or dog he would name after the teacher -much to their disgust.

The winters always were severe with lots of snow so deep we would walk on the crust right over the fences on our way to school.

## WHO WAS "TOTTIE"?

Submitted by Margaret Shanholtzer

Some people might think my hobby slightly eccentric, but to those hooked on genealogy, a collection of photographs of tombstones and cemeteries is a logical interest. Long-departed ancestors seem more than just names and dates when you visit their resting places.

It all began with a faded photo of a family plot in Mother's old album. The wispy writing on the back said "Trefren Family, Sacramento, Calif." It shows TREFREN carved on a rugged granite stone, with some smaller stones clustered around it.

"FATHER." That was Mother's grandfather, John Lewis Trefren, born 1862 in New Hampshire. "MOTHER" was Sarah Peniman Trefren, born 1825 in NH. "J.L.T." as we called him, was a Methodist minister, and preached in about 8 churches in NH before going to Austin, Nevada, to start the first Methodist church in that state, in 1866.

They had four girls and a boy, and all of them but the oldest daughter came West with their parents.

We identified the graves as those of J.L.T. and his two wives, Sarah and Elizabeth, the second, childless wife, and daughters Sadie and Caddie. (Died 1876 and 1903, respectively) There was son Frank Trefren's wife Belle. (Where was he?) and Belle's mother ("Dutcher"? We thought their last name was Schermerhorn!) And WHO was TOTTIE? None of Mother's relatives knew, so we gave up. My parents' graves in Santa Barbara Cemetery are marked, now, by tidy flat markers rather than the elaborate marble statuary once in vogue. "Alma McBride Savary, 1900-1982." "Edward Burgess Savary, 1895-1964."

Last month I visited Cousin-in-law Velma McNeill in Sacramento. On the spur of the moment we went together to the Dept. of Health Services. I had no notes with me, and I had no idea which cemetery to look in.

"All the records of burials before 1903 are in storage, but we have a few here. What year do you want?" the clerk asked me. Desperately I concentrated on the mem-



## WHO WAS "TOTTIE"?

Submitted by Margaret Shanholtzer

ory of that old photo. The one name and date I could remember was---no, not Tottie--- but ELIZABETH died 1909. The names in the unwieldy old book were listed not alphabetically, but by date of death. It also gave the place, cause ("senility") physician, and the cemetery. Elizabeth obligingly died in April, so it didn't take long to find her.

"What's this? MASONIC cemetery? Great Grandfather was a Mason! That's a good lead!"

How frustrating that I had to leave the next day without seeing the cemetery. I'm going back, though!

"I'll take the pictures for you", promised Velma.

I have just received color photos of the plot, not much changed in appearance from the old faded picture. Velma did a good job. The inscriptions are legible. The workers there were most helpful, she reported, and told her that J.L.T. had purchased the plot in 1886 for \$50.00. The inscription on Tottie's grave said "Clara Belle Trefren. Daughter of Frank and Mary Belle Trefren. Born June 18, 1882, Died March 15, 1885." She was Mother's cousin. I wish I could tell Mother I've found Tottie at last.

\* \* \* \* \*

DONATION of 1974-1977 issues of ANCESTORS WEST by Joseph T. Whalen to The Olympia Genealogical Society, c/o Olympias Timberland Library Eighth and Franklin, Olympia, Washington 98501, and in the process of binding has been reported by Ms. Jean Laws, Exchange Editor of Olympia Genealogical Society.

+ \* \* \* \* \* &amp; +

SURNAME PUBLICATIONS of Sacramento,  
publishers of the JOHNSON JOURNAL

according to COLTON CLARION, P. O. Box 96, Broderick, CA 95605, is scheduled, beginning in February, 1988, and two times yearly thereafter, to publish the COLTON CLARION which offers subscriptions at \$10. per year. Pedigree charts, family group sheets, queries, family traditions, anecdotes, etc., with make up the new periodical. Articles and queries, without charge, to be published pertaining to COLTONS.

\* \* \*

THE BOOK OF JOHNSON FAMILY GROUP SHEETS, compiled by the JOHNSON JOURNAL, same Broderick, CA address, (200 8½ x 11" pages, \$9. each before Dec 30, after Jan. 1 \$10. Contains Family Group Sheets from many areas of the United States, England, Scotland, Sweden, and Ireland.

## ANCESTOR TABLE

Chart No. 57

Doris Batchelder Crawford  
1919 El Camino de la Luz  
Santa Barbara, CA 93109  
(for sons)

	Birth	Death
--I		
1. Douglas Melgord CRAWFORD, Jr.	1947 CA	
Steven Edgar CRAWFORD	1950 CA	
Kevin Sumner CRAWFORD	1952 Wash.DC	
Frederick William CRAWFORD II	1956 Manila, PI	
--II		
2. Douglas Melgord CRAWFORD, Sr.	1917 CA	1977 CA
3. Doris Edna BATCHELDER	1918 CA	
--III		
4. Frederick William CRAWFORD	1885 WI	1949 CA
5. Isabel Mandora MELGORD	1888 WI	1964 CA
6. Edgar Barnard BATCHELDER	1865 CA	1936 CA
7. Edna Maria HILLEBRAND	1885 CA	1969 CA
--IV		
8. Henry Martin CRAWFORD	1850	1932 CA
9. Hannah LINQUIST		
10. Isaac MELGORD (I)	1846 Norway	
11. Hannah Louise APHELIN (I)	1848 Norway	1929 WA
12. Joseph Greeley BATCHELDER	1817 NH	1893 CA
13. Lydia Estes PERKINS	1826 NH	1907 CA
14. Henry HILLEBRAND (I)	1840 Germany	1918 CA
15. Rhoda Anne RALSTON	1850 UT	1930 CA
--V		
20. Jeremiah JACOBSEN	1805 Norway	1881 Nor
21. Maren Christina HENRIKSDATTER	1804/5 Norway	
22. Jens HANSEN	1808 Norway	
23. Ingeborg LARSDATTER	1812 Norway	
24. Joseph BACHELDER	1777 NH	1849 NH
25. Susan TILTON	1785 NH	1852 NH
26. Ivory PERKINS	1786 ME	
27. Tabitha ESTES	1786 ME	on 1870 censNH
30. John RALSTON	1815 PA	1902 CA
31. Hannah PEARCE/PIERCE	1821 PA	1903 CA
--VI		
44. Hans Johansen VON APHELIN	1781 Norway	
45. Elen Carolina JENSDATTER		
46. Lars PEDERSEN		
48. Nathan BACHELDER, Jr.	1743 NH	1815 NH
49. Mary GREELEY	1748 NH	1829 NH
50. Nathan TILTON	1757 NH	1804/5 NH
51. Susannah GALE	1761 NH	1840 NH
52. Bradbury PERKINS	1755 ME	
53. Love PERKINS m.2, Trueworthy Palmer	1757 ME	
54. Jonathan ESTES?		
55. Olive LITTLEFIELD?		
60. James RALSTON	1785 PA	1844 PA
61. Catharine HARTMAN	1792 PA	1861 PA

## Ancestor Table Chart No. 57

	Birth	Death
62. Cromwell PEARCE, Jr.	c1806 PA	1831 PA
63. Dorothy SINQUET		1854 PA
--VII		
88. Johannes VON APHELIN	1752 Norway	
89. Marta ---		
96. Nathan BACHELDER, Deacon	1700 NH	1755 NH
97. Mary TILTON	1703/4 NH	1770 NH
98. Andrew GREELEY	1713 MA	1802 NH
99. Mary WEBSTER	1724 NH	1791 NH
100. Timothy TILTON	1718 NH	1784/5NH
101. Martha BOYNTON	1729 MA	1822 NH
102. Daniel GALE	1739 NH	1801 NH
103. Patience EASTMAN	1738 NH	1804 NH
104. Elisha PERKINS	c1726 ME	1804 ME
105. Elizabeth BRADBURY	1734 ME	
106. Newman PERKINS	1734 ME	
107. Sarah SAWYER	1738 ME	
120. John RALSTON	1744 PA	1825 PA
121. Catharine MILLER	1751 PA	1816 PA
122. Peter HARTMAN (I)	1740 Germany	1810 PA
123. Margaret (Metzler) Schreiber	1752 PA	1829 PA
126. Daniel SINQUET (SINKET)		1828 PA
127. Dorothy ----		
--VIII		
192. Nathaniel BACHELDER	1659 NH	1745 NH
193. Elizabeth FOSS	c1666 NH	1746 NH
194. Joseph TILTON his 1st m.	1677 NH	1744 NH
195. Margaret SHERBURNE	1679 NH	1717 NH
196. Joseph GREELE	1683 MA	1761 NH
197. Elizabeth GILMAN	c1685 NH	1757 NH
198. Ebenezer WEBSTER	1667 NH	1736 NH
199. Hannah JUDKINS	1676 NH	
200. Joseph TILTON his 2nd m. See #194		
201. Elizabeth (HILLIARD) SHAW	1679 NH	1724
202. William BOYNTON	1690 MA	1771 NH
203. Joanna (STEVENS) COLLINS	1692 MA	1765 NH
204. Jacob GALE	1708 MA	1760 NH
205. Susanna MORRILL	1714 MA	
208. Ja cob PERKINS	1685 MA	1770-2ME
209. Anne LITTLEFIELD	1702	
210. John BRADBURY	1697	1778 ME
211. Abigail YOUNG	1699 ME	1787 ME
212. Jacob PERKINS See #208		
213. Anne LITTLEFIELD Same as #209		
214. William SAWYER	1705 ME	1768
215. Love BRAGDON	1709 ME	
240. Robert RALSTON (I)	1722 Ireland	1814 PA
241. Elizabeth BELL		
242. John Adam MILLER		1791 PA
244. Johannes HARTMAN (I)	c1717 Germany	1787 PA
245. Margaret MOSES (I)	c1717 Germany	1773 PA
246. John METZLER		
247. Christiana ---		
252. Jacob SINQUET		

## Ancestor Table Chart No. 57

		Birth	Death
--IX			
384.	Nathaniel BACHELDER (I) 1st m.	1630 England	1710 NH
385.	Deborah SMITH		1675 NH
386.	John FOSS (I)	1638	1699/70 NH
387.	Elizabeth/Mary BERRY		
388.	Daniel TILTON	c1645 MA	1714-6NH
389.	Mehitable SANBORN	1650	NH
390.	Samuel SHERBURNE	1638 NH	1691 ME
391.	Love HUTCHINS	1647 MA	1739 NH
392.	Andrew GRELE	1646 MA	1736 MA
393.	Sarah BROWN	1654 MA	1727 MA
394.	Edward GILMAN	c1648 NH	1692
395.	Abigail MAVERICK		
396.	Thomas WEBSTER (I)	1631 England	1715 NH
397.	Sarah BREWER		1717/8NH
398.	Joel JUDKINS		
399.	Mary BEAN her 2nd m. David Robinson	1655 NH	1743
400.	Daniel TILTON Same as #388		
401.	Mehitable SANBORN Same as #389		
402.	Timothy HILLIARD	c1645/6 NH	1723
403.	Apphia PHILBRICK	1655 NH	
404.	Joshua BOYNTON	1646 MA	1736 MA
405.	Hannah BARNET, BURNET, BURNOP		
406.	Jchn STEVENS	1670 MA	1716 MA
407.	Dorothy HUBBARD	1673 MA	
408.	Daniel GALE	1676 MA	1742 MA
409.	Rebecca SWETT	1699 MA	
410.	Jacob MORRILL	1689 MA	
411.	Mary WEBSTER		
416.	Jacob PERKINS	1662 MA	1705 MA
417.	Elizabeth SPARKS		1692 MA
418.	Josiah LITTLEFIELD	c1670	1717 ME
419.	Lydia MASTERS		1701 ME
420.	Wymond BRADEBURY	1669	1734 ME
421.	Mariah COTTON 2nd m. John Heard	1672	1736 ME
422.	Joseph YOUNG		
423.	Abigail DONNELL		
424.	Jacob PERKINS Same as #416		
425.	Elizabeth SPARKS Same as #417		
426.	Josiah LITTLEFIELD Same as #418		
427.	Lydia MASTERS Same as #419		
428.	Daniel SAWYER	1683 ME	
429.	Sarah --- her 2nd m. Joseph Hill		
430.	Arthur BRAGDON	1666 ME	1736 ME
431.	Sarah CAME		
480.	John RALSTON (I)	Ireland	1757 PA
481.	Anne ---		
--X			
768.	Nathaniel BACHELDER	1590 England	1645 England
769.	Hester MERCER		
770.	Jchn SMITH/BLAND	1621	1674 MA
771.	Deborah PARKHURST		
774.	William BERRY (I)		
776.	William TILTON (I)	1584,-89? Eng.	1653 MA

## Ancestor Table Chart No. 57

	Birth	Death
777. Susanna --- 2nd m. Roger Shaw		
778. William SANBURN (I)	c1622 England	1692 NH
779. Mary MOULTON (I)		
780. Henry SHERBURNE (I)		
781. Rebecca GIBBONS (I)		1667 NH
782. John HUTCHINS (I)	1604 England	1685 NH
783. Frances ALCOCKE	c1612 England	1694 MA
784. Andrew GREELE (I)	1619/20 England	1697 MA
785. Mary MOYSE (I)	c1622 England	1703 MA
786. Henry BROWNE (I)		
788. Edward GILMAN		1653 at sea
789. Elizabeth SMITH		
790. Antipas MAVERICK (I)		1678 MA
792. Thomas WEBSTER		1634 Eng
793. Margaret--(I);2nd m.Wm Godfrey;3rd m. John Marion		
794. Thomas BREWER		
796. Job JUDKINS (I)	c1606 Scotland	1694/5 MA
798. John (MAC)BEAN (I)	c1634 Scotland	1718 NH
799. Hannah LISSEN/LYSSON		1659 NH
800. William TILTON Same as #776		
801. Susanna --- Same as #777		
802. William Sanborn Same as #778		
803. Mary MOULTON Same as #779		
804. Emanuel HILLIARD		1657 at sea
805. Elizabeth PARKHURST her 2nd m. Jos.Merry		
806. James PHILBRICK (I)	1619 England	1676
807. Ann ROBERTS		
808. William BOYNTON (I)	1605 England	1686 MA
809. Elizabeth JACKSON		
812. John STEVENS, Jr.	1639 MA	1690 MA
813. Jcanna THORN		
814. Richard HUBBARD		1719 MA
815. Martha ALLEN	c1646 MA	1718 MA
816. Bartholomew GALE		
817. Mary BA CON		
818. Stephen SWETT		as of 1693/4
819. Rebecca SMITH		
820. Jacob MORRILL	1648 MA	1718 MA
821. Susanna WHITTIER	1656 MA	1726/7MA
822. John WEBSTER	1655/6 MA	1732-7 MA
823. Bridget HUGGINS	1651 NH	
832. Ja cob PERKINS (I)	1624 England	1699/70MA
833. Elizabeth WHIPPLE )	c1629 England	1685/6MA
834. John SPARKS, - E		
835. Mary SINNETT, SINNOTT		
836. John LITTLEFIELD (I)	1624 England	1696/7 ME
837. Patience ---		
838. Nathaniel MASTERS		1708 MA
840. Wymond BRADBURY	1637	1669 Nevis WI
841. Sarah PIKE 2nd m. John Stockman	1641/2 MA	
842. John COTTON, Jr.		1698 SC
843. Joanna ROSSITER	1642	1702 MA
848. Jacob PERKINS Same as #832		
849. Elizabeth WHIPPLE Same as #833		



## Ancestor Table Chart No. 57

	Birth	Death
850. John SPARKS, - E Same as #834		
851. Mary SINNETT, SINNOTT, Same as #835		
852. John LITTLEFIELD Same as #836		
853. Patience -- Same as #837		
854. Nathaniel MASTERS Same as #838		
856. William SAWYER	1655/6 MA	1718 ME
857. Sarah (LITTLEFIELD) WELLS		1734/5ME
860. Thomas BRAGDON		1690 ME
862. Arthur CAME		
--XI		
1536. Stephen BACHILER (I)	1561 England	1660 Eng.
1542. George PARKHURST (I)		
1543. Phebe LEET		
1556. John/William SANBORN		
1557. Anne BACHILER m. (2) Henry Atkinson		
1558. John MOULTON (I)	c1559 England	1649/50NH
1559. Anne GREEN, GRENE, GREENE (I)	c1600 England	
1560. Joseph SHERBORN	c1575 England	1621 Eng.
1562. Ambrose GIBBINS (I)		1656 NH
1563. Rebecca ---		1655 NH
1570. Joseph MOYCE (I)	c1585-90 Eng.	
1576. Edward GILMAN (I)	bpt.1587 Eng.	1654 NH
1577. Mary CLARK		
1580. John MAVERICK (I)	1578 England	1636 MA
1581. Mary GYE	c1580 England	
1592. Joel JUDKINS		
1598. Nicholas LISSEN/LYSSON (I)	c1614-18	
1604. John/William Sanborn Same as #1556		
1605. Anne Bachiler Same as #1557		
1606. John MOULTON Same as #1558		
1607. Anne GREEN Same as #1559		
1610. George PARKHURST Same as #1542		
1611. Phebe LEET Same as #1543		
1612. Thomas PHILBRICK/FELBRIGGE (I)	1584 England	1667 NH
1613. Elizabeth KNAPP/KNOP (I)		1663/4NH
1614. Thomas ROBERTS (I)		1673/4NH
1624. John STEVENS (I)	c1611 England	1688/9 MA
1630. William ALLEN (I)		1686 MA
1631. Ann GOODALE/GOODELL (I)	1618 England	1678 MA
1632. Edmund GALE (I)	c1596 England	1641 MA
1636. John SWETT (I)		1651/2MA
1638. Thomas SMITH (I)		
1639. Rebecca ---		
1640. Abraham MORRILL (I)	1588 England	1662 MA
1641. Sarah CLEMENT (I) 2nd m. Thomas Mudgett	c1626	1694 MA
1642. Thomas WHITTIER (I)	c1620 England	1696 MA
1643. Ruth GREEN		1710 MA
1644. John WEBSTER (I)	c1632 England	
1645. Ann BATT (I)		1716 MA
1646. John HUGGINS (I)	c1609 England	1670 NH
1647. Bridget ---		
1664. John PERINS (I)	c1583 England	1654 MA
1665. Judith GATER, -ES (I)	1586 England	

## Ancestor Table Chart No. 57

	Birth	Death
1666. Matthew WHIPPLE (I)	c1590 England	1648 MA
1667. Ann HAWKINS (I)	c1600 England	1643 MA
1670. Walter SINNETT/SINNOTT		
1672. Edmund LITTLEFIELD (I)	1592 England	1661 ME
1673. Annis (Agnes, Anne) AUSTIN (I)	1600 England	1677/8 ME
1680. Thomas BRADBURY (I)	1610/1 England	1694 MA
1681. Mary PERKINS (I)	1615 England	1700 MA
1682. Robert PIKE (I)	1616/7 England	1706 MA
1683. Sara SAUNDERS/SANDERS (I)	1615 England	1679 MA
1684. John COTTON (I)	1588 England	1652 MA
1685. Sarah (HAWKRIDGE)STORY 3rd m. Richard Mather		1676 MA
1686. Bryan, Brian, Bray ROSSITER		1672 CT
1696. John PERKINS Same as #1664		
1697. Judith GATER, -ES Same as #1665		
1698. Matthew WHIPPLE Same as #1666		
1699. Ann HAWKINS Same as #1667		
1704. Edmund LITTLEFIELD Same as #1672		
1705. Annis AUSTIN Same as #1673		
1712. William SAWYER (I)	c1613 England	1702/3 MA
1713. Ruth BEDFIELD/BEDFORD/BENFORD		
1715. Francis LITTLEFIELD (I)	1619 England	
1720. Arthur BRAGDON (I)	1597 England	1678 ME
--XII		
3114. Stephen BACHILER Same as #1536		
3116. Robert MOULTON		
3120. Henry SHERBURN		1598 Eng.
3160. Peter MAVERICK		1616 Eng.
3161. Dorothy TUCK(E)		
3210. Stephen BACHILER Same as #1536, #3114		
3224. Thomas FELBRIDGE/PHILBRICK		
3262. Richard GOODALE (I)	1594 England	1666 MA
3263. Dorothy WHITREDS/WHITOUDS (I)		1664/5 MA
3282. Robert CLEMENTS (I)	1595 England	1658 MA
3284. Richard WHITTIER		
3285. Mary ROFF/ROLFE		
3288. John WEBSTER (I)		1645/6 MA
3289. Mary SHATSWELL (I)		1694 MA
3290. Nicholas BATT (I)		1679 MA
3291. Lucy ---		
3328. Henry PERKINS	c1555 England	1608 Eng
3329. Elizabeth SAWBRIDGE		
3330. Michael GATER, -ES		
3331. Isabel BAILEY?BAILIE		
3332. Matthew WHIPPLE		1618/9 Eng
3333. Joan ---		
3334. John HAWKINS		1619 England
3344. Francis LITTLEFIELD		
3346. Richard AUSTIN		
3360. Wymond BRADBURY	1574 Eng.	1650 Eng
3361. Elizabeth WHITGIFT	1574 Eng. and	1612 Eng
3362. John PERKINS Same as #1664		
3363. Judith GATER, -ES Same as #1665		
3364. John PIKE (I)	1572	1654 MA
3365. Dorothy DAY (I)		

## ANCESTOR TABLE CHART 57

Doris Batchelder Crawford is the diligent soul who copies the marriage records at the Courthouse for ANCESTORS WEST. She also serves as a librarian once a month. Her profile appeared in the June 1987, ANCESTORS WEST, p.57 and states she was born in San Mateo, CA, the second generation to be born in the area. She attended Berkeley (U.C.) and earned a B. A. in History. Her husband worked for the foreign service in agriculture. Doris has lived primarily in Latin America, but also Spain and the Philippines. With two sons at UCSB, they retired here. All four sons attended UC schools. She and her brother who lives in the Alameda CA area have made several trips to New England. Her most recent was to the 1987 Summer Homecoming at New England Historic Genealogical Society, of which she is now a member and anticipating participation in the Book Lending Service. She is very precise in her research and has a 3 x 5" card for each ancestor, with notations on the back of primary documentation and references supporting the relationship and ancestry.

\* \* \* \* \*

For the Benefit and Participation of more Recent Members the following is repeated.

## SPECIAL INTEREST GROUPS - SBOGS

HELP YOURSELF AND SBOGS TOO! Our Society has become a more active organization and, through the interest and efforts of our members, we expect this to continue. We urge you to respond to this call for your assistance. We need to know what we can do to help you and by returning this form, you will be helping us. We welcome your comments and hope there's enough room for them and by the way, if you like things the way they are, we'd like to know that too.

INTEREST AREAS: Would you be interested in small group sessions for BRITISH ISLES, SCANDINAVIA, SPECIFIC EUROPEAN COUNTRIES, NEW ENGLAND, any particular New England state, Middle Atlantic, Southern States, Midwest, Western States and Canada? Other—(PLEASE list your particular areas of interest)

## SOCIETY ACTIVITIES

- Would you be able to help yourself and the Society by participating in
- Typing       mailing       book review       hospitality
- Sales       fund raising       telephone       publicity
- indexing       membership       art work       drafting
- Library staff       man/woman Friday       seminar worker
- short projects       project ideas       help beginners
- Research Committee -- respond to mail requests
- copy records (marriage, birth, etc.) for Ancestors West as needed
- give brief presentations about the Society or genealogy to local organizations
- handyman/woman - mechanical repair, general fix-up, painting, etc.
- serve food, assist with buffet set-up       Other (specify)

YOUR NAME AND ADDRESS IS IMPORTANT SO WE CAN CALL ON YOU. THANKS.

QUERIES

HEWITT            Thomas E. HEWITT died in Commerce, TX in the 1920's. The funeral home in TX advised me that someone from CA contacted them for HEWITT information. Before I could find out who had contacted them, the funeral director died. Any help on this line will be appreciated.

Mrs. E. M. Becraft, 3915 Corona St.  
Tampa, Florida 33619

CASE              Seeking the will of Henry CASE II,  
VAIL                b. 1656 Southold, Long Island, NY,  
                      m. Tabatha VAIL c. 1675, d. 1749,  
                      Orange Co., NY.

CASE              Seeking the will of Henry CASE III  
PAYNE              b. 1684, Southold, Long Island, NY,  
                      m. Martha PAYNE c. 1705, d. 1735,  
                      Southold, NY, burned to death in a  
                      barn.

CASE              Who are the parents of Daniel CASE  
                      b. c. 1701, Long Island, NY, d.  
                      c. May, 1761, Orange Co., NY?

SUMMERS           Seeking the will and any info.  
                      re: Levin SUMMERS d. after 1850,  
                      Menard Co., IL. 2nd wife, Lydia.

SUMMERS           Death date and location wanted for  
                      Hardin SUMMERS, b. c. 1795 in MD?  
Last known in Clay Co., MO, 1860. Last known  
wife, Mary. Who were his parents?

Patricia Case, 1002 S. Antonio Crk.  
Rd., Santa Barbara, CA 93111

SCOTT              Adam SCOTT was b. Canada, d. 1871  
ARMSTRONG        Muskegon Co., Holton, MI, m. bef.  
                      1834 ? ARMSTRONG, b. bef. 1824,  
                      Canada, d. bef. 1842, Holton, MI.  
Where was Adam SCOTT born? Who were his parents?  
What was his first wife's name? He m. 2nd her  
sister, Phoebe ARMSTRONG. Where in Canada is this  
ARMSTRONG family from? Was it Ontario Co.? Who  
were the sisters' parents?

Carol Kosai, 234 Old Ranch Drive,  
Goleta, CA 93117

QUERIES

EVEN John Peter EVEN [EWEN] b. 1841,  
 EWEN came from Luxembourg 1857 m. 1865  
 WILTGEN Magdelina WILTGEN b. 1849, who im.  
 1860. They settled in Ozaukee Co.

WI. When did he arrive? Who are the parents?  
 There are many WILTGENS in Ozaukee Co. How are  
 they related?

OAKS Jesse OAKS from NC was a son,  
 LOVETT Phineas m. Rachael LOVETT,  
 d. 1854. Where in NC is Jesse  
 from?

BENT Mary BENT B. 1812, D. 1900 m.  
 MILBURY Samuel MILBURY, b. 1804, d. 1883.  
 Her father was from Nova Scotia.  
 Where was she born? Where were they  
 married? What is the link between the BENT family  
 that moved from New England to Nova Scotia?

MARSHALL Soloman MARSHALL moved from New  
 England to Nova Scotia, where he  
 appears on census records, b. 1745.  
 Where was he born? Is there a link to David  
 MARSHALL?

Cecilia Spencer, 4983 La Gama Way  
 Santa Barbara, CA 93111

McPEAK William McPEAK b. ca 1764 in NJ,  
 MASTERS son of Ezekiel McPEAK and Margaret  
 MAYNE MASTERS. Resided Sussex Co., NJ,  
 prior to move to Guernsey Co., OH  
 in 1800. Married (probably in NJ)  
 to ? MAYNE. William m. 2nd,

Susanna JOLLY dec. 1822, Belmont Co., OH. He  
 resided Morgan Co., OH 1825-1854 and reportedly  
 died ca age 90 in IN. Would like to contact  
 anyone tracing McPEAK/MASTERS/Mayne in NY and OH.

Nadine Gauthier Heppell,  
 556 Dalton Way, Goleta, CA 93117

BLAKE Seeking information re Dalton BLAKE  
 b. Dalton, Coos Co., NH. Son Nahum  
 BLAKE b. 1812, NH.

Carol Kosai, 234 Old Ranch Drive,  
 Goleta, CA 93117



## FAMILY RESEMBLANCE - PHYSICAL FEATURES

Lilian M. Fish

MANN FAMILY

EYES - CHIN?



DAVID SAMUEL MANN, grandson of  
b. 21 July 1944, Keene, Cheshire Co., NH  
living Lake Wales, Polk Co., Florida  
m. 26 Dec 1963 Keene, NH Sandra  
Stamatelos (adopted dau- has Putnam  
ancestry; 2 children  
1. Melissa, b 1 June 1969, Keene, NH;  
grad. Lake Wales Hi 1987; has Academy  
training for employment as travel a-  
gent.

2. Alan David, b 24 Nov 1971, Keene, NH  
The family moved to Florida in 1974.



(Samuel E. Mann con.)

was himself threatened with T.B.  
Went to Hawaii as a missionary  
teacher in Hilo; later a drafts-  
man in a Honolulu sugar factory  
and affiliated wit' Fort St.Ch.-  
When older brother died was call-  
ed back to MA; winters too cold.  
Apopka and Orlando, Fla. 8 yrs.

1900-1906, lived in Methuen, MA  
1906 moved to Pelham, N.H. d. 1930.

SAMUEL ELEAZER MANN  
b. 10 Apr 1853 Methuen, Essex  
Co., MA; grad. 2d class 1872  
Worcester Poly Tech, MA d 14  
Sept. 1930 Pelham, Hillsborough  
Co., NH; m(1) Sophia Emerson, dau  
of Rev. Joseph Emerson, missionary  
she d 1883 Hawaii in childbirth.  
m (2) 14 Nov 1900 Pelham, NH  
Ella Agnes Hobbs (twin of Etta  
Alice)(Charles William, Civil War  
vet, Moody ambidextrous; Samuel.  
James. Rev. James, Harvard 1749,  
first minister Pelham, NH, James, Rev.  
soldier Morris, Morris of Hampton NH  
Ella was b 3 Mar 1871, Pelham, NH;  
d. 20 Oct 1946, Unity NH; bur. Pelham.

## Great Grand Parents

Mary Hamilton Graves Mann, b. 8 June  
1828, Boston, MA; d. 5 Feb 1861,  
Lawrence, Essex Co., MA; m 29 May  
1849 Samuel Smith Mann, Methuen, MA.  
soap mfr, b. 8 Apr 1829, Salem, Essex  
Co., MA; d 1 May 1860, Graves Hill, Me-  
thuen, MA; both bur. Walnut Grove Cem.  
Methuen; both died of "consumption."  
Son, Samuel, on refusing to matriculate  
at Harvard, preferring to attend the  
newly established (his 1872 graduating  
class was the 2d) Worcester Tech. was  
given the \$500 remainder of his inheri-  
tance in nickels and told he was on his  
own. While teaching in Meriden, Ct. High

## RESEARCH AIDS

Lilian M. Fish  
Newspaper Clippings

Besides the material for which the clipping was treasured by an older member of the family, usually without any indication as to the newspaper or date, be sure to check the reverse side.

A case in point - a clipping from the Leisure section of the Santa Barbara News Press, Saturday, June 14, 1986 is illustrated by a picture of Paula Scott admiring the 18th century painting by Miguel Cabrera which was recently donated to the Historical Museum, depicting the Coronation of the Virgin, signed by Mexican artist, Miguel Cabrera, the first director of the Academy of Fine Arts in Mexico City. In its original ornate hand-carved frame it was then on view in the Museum lobby.

On the reverse side is an article on Writer's Conference: Who else is speaking - Irving P. Lazar, literary agent to such notables as playwright Neil Simon and former President Richard Nixon is headlined as having been added to the roles of guest speakers at the Santa Barbara Writers' Conference. Each day of four o'clock in the afternoon, guest speakers were to be featured. and included June 24, Charles M. Schulz, author and cartoonist of "Peanuts" to give a talk on what makes people laugh. Also Diane Gage and Marcia Hirsch, authors of "Getting Published". June 25, Ralph Nelson, a resident of Santa Barbara, actor, playwright, screenwriter and director-producer of motion pictures and television. He directed "Lilies of the Field," "Charley," "Father Goose (with Cary Grant) and "Requiem of a Heavyweight." Julia Child, probably the best known cooking specialist in the country, (also a resident of Santa Barbara - at least part-time.) and June 26 Joseph Pursch, known nationally as a speaker on problems of addiction. Evening speakers included Ray Bradbury, Dr. Laurence Peter, Barbara Jampel, Joseph Gores and Jonathan Winters.

In discussing this admonition with Carol Kosai, the assistant editor, she stressed the importance of the reverse side of clippings. She had received much material from a very elderly relative, including an obituary with no date or other information needed for genealogical purposes. However, there was an item regarding a man running for political office on the other side. A letter to the library in the town in question produced the date when the man ran for office and as a result the problems were solved.

The editor has quite a number of clippings saved by her father, Samuel Eleazer Mann, from newspapers in Hawaii, where he served as a missionary teacher when a young man, and from paper in Florida, where he was editor of a newspaper in Apopka or Orlando, and ran a column on poetry. Those will have to be investigated when time allows.

Be sure to read both sides of every clipping that comes your way.

## RESEARCH AIDS

Lilian M. Fish

Family Mementos

1. 2. 3. 4. 5. 6. 7. 8. 9. 10. 11. 12. 13. 14. 15. 16. 17. 18. 19. 20. 21. 22. 23. 24. 25. 26. 27. 28. 29. 30. 31. 32. 33. 34. 35. 36. 37. 38. 39. 40. 41. 42. 43. 44. 45. 46. 47. 48. 49. 50. 51. 52. 53. 54. 55. 56. 57. 58. 59. 60. 61. 62. 63. 64. 65. 66. 67. 68. 69. 70. 71. 72. 73. 74. 75. 76. 77. 78. 79. 80. 81. 82. 83. 84. 85. 86. 87. 88. 89. 90. 91. 92. 93. 94. 95. 96. 97. 98. 99. 100.

Newspaper Clippings



Sewell Graves

Samuel E. Mann

A miniature Spanish book which belonged to the Editor's father, apparently a gift from his uncle, who was master of a vessel plying between Coos Bay Oregon and San Francisco or Santa Cruz, California in the 1800s. He lived in Santa Cruz.

CAN ANYONE DECIPHER THE SHORTHAND ABOVE?

Is on inside front cover of the book.

Born 17 Feb 1841,  
 Sewell Fogg Graves was son of John and Delilah (Smith) Graves (b 29 Sept 1800 Newmarket, N.H., d 23 Nov 1880 Palmer, MA) m. Amelia BATCHELDER b. Bath, ME 2 May 1841 (Capt. Josiah, Josiah, Theophilus, Theophilus, Benjamin, Nathaniel, Nathaniel, Stephen) according to p. 247, Batchelder's, Batcheller Genealogy, Frederick Clifton Pierce, Chicago, 1898

Table of Contents

## INDICE.

1. EL DESENGAÑO DE CARLOS.
2. EL DICHO ENCUESTRO.
3. LA GORRA DE LOS DESEOS.
4. LUCIA, O, "YA NO VOLVERÉ A SER MALA, PAPA."
5. LA VIDA.
6. LA VERDAD ET LA MENTIRA.
7. JUANITA Y SU CORDEIRA.
8. LA NIÑA PACIFICADORA.
9. EL PAN, O, EL MANTENIMIENTO DE LA VIDA.

CIENTOS INTERESANTES

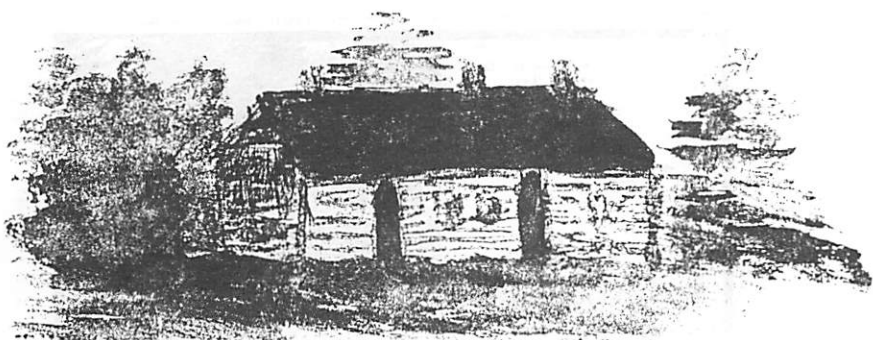
E INSTRUCTIVOS PARA LOS NIÑOS



NUEVA YORK:

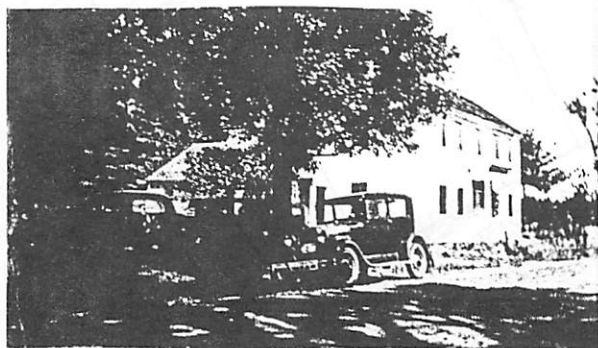
PUBLICADO POR LA SOCIEDAD AMERICANA DE TRATADOS  
 CALLE DE NAMAC, NO. 146

10. LA ORACION DOMINICAL.
11. EL ATEO CONVENCIDO POR UN NIÑO.
12. PERSONAJES NOTABLES DEL ANTIGUO TESTAMENTO.
13. VIDA DE JESU-CRISTO.
14. PERSONAJES NOTABLES DEL NUEVO TESTAMENTO.
15. EL GENIO; O, HISTORIA DE SUSANA E ISABEL.
16. "PRESTO CUMPLIRÉ DIEZ AÑOS."

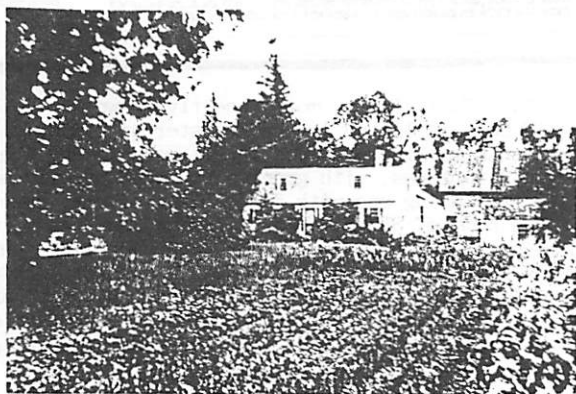


*L.H. Fish*

Moody Hobbs home, Windham Road Pelham, N.H.  
Maternal Great Grandparent - teacher



Mann family home, Pelham, N.H. 1926, with Ford  
in which Charles Melvin Fish and Lilian Mann Fish  
drove to San Pedro, Los Angeles County, California.

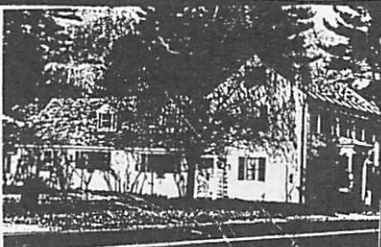
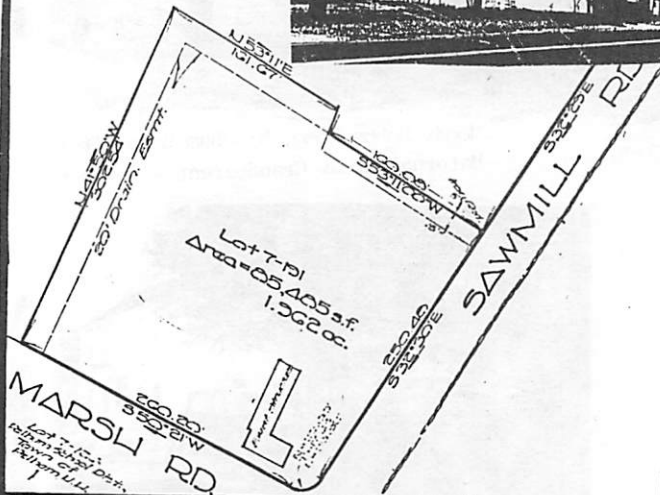


Home of paternal great grandparents, Methuen,  
Essex County, Massachusetts -669 Prospect St.

## LOCAL RECORDS

MANN FAMILY HOME - Ell extended, gabled and by Hayes family, named Seven Hearths

Listed by the Pelham, N.H. 1976 Bicentennial Commission in its Directory of Historic Homes.

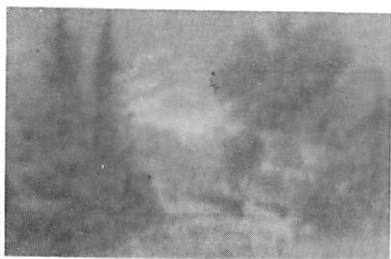



APPROVED BY THE PELHAM PLANNING BOARD  
 PELHAM SUBDIVISION FILE NO. \_\_\_\_\_ SHEET \_\_\_\_\_ OF \_\_\_\_\_  
 CLERK *Walter P. Lewis* DATE *12/4/12*  
 SECRETARY

APPROVAL IS GRANTED SUBJECT TO ALL CONDITIONS AND REQUIREMENTS OF THE LAUD SUBDIVISION REGULATIONS OF THE TOWN OF PELHAM, AND FURTHER SUBJECT TO ALL SPECIFIC CONDITIONS AND REQUIREMENTS AS FOLLOWS

*H. Tracy Davis*

The Mann Family Home, more recently known as the Hayes Residence, is listed in the Register of Historic Homes. Is within walking distance to all schools and the library. Seven fireplaces, with granite hearths quarried on Gage Hill, including one with large beehive oven, have given it the name of SEVEN HEARTHES. Exposed oak beams, wide pine board floors, wainscoting and panelling, petrified walls in the two-story section, a large lot with a small pond lend distinction to a dwelling at Marsh and Sawmill Roads, at the entrance to Stonegate, Pelham's most prestigious neighborhood. Explicit and extensive deed restrictions protect the development.



Drawing by Mary Hamilton Graves Mann of what was thought to be the Ockendon family cottage in Woodford, about 25 miles north of London, England. Proved to be a mill. Woodford is the district represented in Parliament by Sir Winston Churchill. His statue is in the central mall.

During the Brit-Rail strike in 1984, Dr. Goose, who lives in a renovated two-story sixteenth century house near Saffron-Walden, Essex County, drove his vintage deep blue, red leather-upholstered car to Woodford, to try to identify the cottage, accompanied by the Editor and his teen-age daughter. While seated in the car on the main street looking at a snapshot of the above drawing, a local man approached and volunteered the information that it looked like a mill that used to be at the Palisades; gave directions to reach the location and also volunteered the information that a visit should be made to the local library as a book entitled "Woodford Then and Now: had just been published. The mill site was found at the end of a dirt road and just around the corner, unmarked, was a broad sandy beach and a beautiful little pond with gay-colored sails on many small boats. A visit to the library disclosed that the book had been published by the local Historical Photographic Society and that the President lived just down the street. The book, a large volume, printed by a charitable organization in Texas, bound in dark green leather, embellished in gold lettering and a shield in an edition of 2,000, with only a few hundred remaining unsold, had been printed early in the summer. The President's wife sold one to the Editor and the President gave her a dozen frameable prints of older buildings being sold to help raise funds for the publication.

Any reader may have equally valuable and productive mementos.

You are urged to share your experiences in ANCESTORS WEST.

## THE SEED BED

### A Column of Local Sources

By Marilyn Owen

The LIBRARY OF THE SOUTHERN CALIFORNIA GENEALOGICAL SOCIETY, 122 South Golden Mall, Burbank, CA, can be reached by private auto from Santa Barbara, in less than two hours. In addition, our Santa Barbara Genealogical Society runs a bus down there, at least once a year. The library contains more than 4,200 bound volumes of family and local histories, and over 1,600 bound volumes of periodicals. The trained volunteer staff is always very friendly and helpful. In addition to most standard genealogical reference works, some of the larger collections held by the library, are worth noting especially:

Alabama Records, by Pauline Jones Gandred (also at LDS Los Angeles Temple Library). 245 volumes of early vital records of the various Alabama Counties. Each county has its own volume (or volumes) of births, marriages, deaths, will and probate records, pension applications, etc. Each book has its own index.

Alabama 1907 Census of Confederate Soldiers, 38 volumes.

Vital Records Of Massachusetts, 113 volumes, published by the New England Historical and Genealogical Society. Each town or city, which kept early vital records, has its own volume.

Pennsylvania Archives. The SCGS Library has 79, of the 138 volume set (volumes may be also found at the UCSB Library, Sons of the Revolution Library, and the Los Angeles Public Library). This major source of genealogical data for Colonial and late 18th and 19th Century Pennsylvania, comes in ten series, with indexes making up parts of the volumes of each series. The indexes sometimes need to be carefully searched for, as they are not placed with any consistency throughout the series. They may be at the end of a volume, or in the last book of several volumes, that are indexed together. Sometimes the complete Series is indexed at the end in one or more volumes (this may be in addition to individually indexed books). Also, the Seventh Series, in five volumes, is entirely an index to Series 6, and contains over one million names. A sampling of what kinds of materials can be found in these records are:

THE SEED BED, page 2  
SCGS Library, Pennsylvania Archives, cont.

|               |                            |
|---------------|----------------------------|
| Baptisms      | Series 6 Volume 6          |
| Immigrants    | Series 1 Volume 5-6        |
|               | Series 2 Volume 17         |
| Land Warrants | Series 3 Volume 24-26      |
| Marriages     | Series 2 Volume 2, 8-9     |
| Militia Rolls | Series 1 Volume 3, 5-9     |
|               | Series 2 Volume 3-4, 13-15 |
|               | Series 3 Volume 23         |
|               | Series 4 Volume 1, 3-6, 8  |
|               | Series 5 Volume 5-8        |
|               | Series 6 Volume 1-2        |
| Petitions     | Series 6 Volume 14         |
| Tax lists     | Series 3 Volume 11-22      |
|               | Series 4 Volume 7          |

The SCGS Library is located in the rear of 122 South Golden Mall, Burbank. The entrance is from the walkway from the parking lot to the Mall. This is the only genealogical library in the extended area which is open on Sundays. The first two Sundays each month are for general research, with the last three Sundays being reserved for SCGS Workshops. The hours are 10:00 a.m. to 4:00 p.m. daily, except workshop Sundays and holidays. The library is also open Tuesday evenings until 9:00 p.m. Telephone: (818) 843-7247.

DID YOU KNOW that many of the vast holdings of the Sutro Library in San Francisco, are available to you to use here in Santa Barbara? Sutro Library is a branch of the California State Library System, and its collections include family histories, state and local histories and records for all states except California (Strictly California records are found in the California Room in the State Library in Sacramento). Sutro also maintains a collection of British local history and genealogy to back up its Americana collections. The down-town Santa Barbara Public Library has the catalog (on microfiche) of the Sutro holdings which are available to the public to order at 50¢ a book (or microfilm), through inter-library loan. The microfiche catalogue (located at the Reference desk) is in two sections: 1, Surname. Contains lists of any family genealogies that the library might hold for your particular surname & also the names of other books that may contain significant entries for that surname. 2, Locality. Contains numerous County Histories and local records of all kinds, such as: records of marriages, probates, taxes, cemeteries, churches, etc. States are listed alphabetically, with books of a general nature on that particular state being listed first. This is followed by an alphabetical listing of the counties, showing all materials that deal with those areas.



## WOMEN IN THE AMERICAN REVOLUTION

Compiled by Lillian M. Fish from DAR PATRIOTS INDEX, other Sources

Abbreviations: a = before b = born c = circa (about) d = died  
 m = married p = after x or \_\_\_\_\_ = name of spouse unknown  
 n.d. = no details CS = Civil Service N = Nurse PS = Patriotic Service  
 \* = Pension w\* = Widow's Pension SDI Signer, Declaration Independence

| NAME  | BIRTH      | DEATH      | SERVICE/STATE DATA | RE HUSBAND   |
|---|------------|------------|--------------------|--|
| JACKSON<br>Elizabeth Cummins  | 1724       | 1825       | PS/VA              | JACKSON, John<br>Pvt/VA 1719-9-25-1804<br>m Elizabeth Cummins  |
| JENKINS<br>Bethia Harris  | 9-14-1752  | 8-12-1842  |                    | JENKINS, John (Jr.)<br>LT/CT* 11-27-1751<br>d. 3-19-1827<br>m Bethia Harris  |
| JOHNSON<br>Jemima Suggett   | 6-29-1753  | 2-23-1814  | PS/VA              | JOHNSON Robert<br>CAPT/PS/VA<br>b 7-17-1745 d 10-15-1815<br>m. Jemima Suggett  |
| JOHNSTON<br>Hepzabeth Tyler<br>m (1) James BELL<br>(2) Col. Robert JOHNSTON | 12-5-1754  | 7-8-1846   | PS/VT<br>NH        | JOHNSTON, Robert<br>Sgt/Lt COL/VT<br>b 9-13-1759 d 2-29-1824<br>m (1) Abigail Hadlock<br>(2) Abigail Way<br>(3) Jane Bell (4) Mrs.<br>Hepzibah(Tyler) Bell |
| JONES<br>Dorothy Chamberlayne   | 1710       | 1781       | PS/VA              | JONES, Peter<br>PS/VA  |
| KELLY,<br>Hannah Bartlett   | 11-16-1704 | 4-6-1789   | PS/MA              | KELLY, Richard   |
| KENNEDY<br>ANN  | 1760       | 3-24-1836  | Messenger          | HAMILTON, Thomas<br>PVT SC<br>SC. b 7-2-1760 4 5-2-1853  |
| KENNEDY<br>Margaret White   | 1756       | 1820       | PS/SC              | KENNEDY, James<br>LT/QM/SC<br>b 1752 d 1820<br>m Margaret White  |
| KENNER<br>Margaret Eskridge   | 1715       | 10-8-1801  | PS/VA              | KENNER, Howson   |
| KERFOOT<br>Margaret   | c 1750     | p 3-4-1814 | PS/VA              | KERFOOT, George  |
| KIRBY<br>Ruth Marvin  | 12-20-1763 | 10-17-1817 | PS/CT              | KIRBY, Ephraim<br>LT/CT<br>b 2-23-1757 d 10-20-1804<br>m Ruth Marvin   |
| KIRK<br>Mary Story  | 1720       | 11-1-1804  | PS/PA              | KIRK, Moses  |

| WOMEN IN THE AMERICAN REVOLUTION  |           |             |               |  |            |
|---|-----------|-------------|---------------|--|------------|
| NAME  | BIRTH     | DEATH       | SERVICE/STATE | DATA   | RE HUSBAND |
| KIRKPATRICK<br>Lydia Lewis  | 1742      | a 2-15-1832 |               | KIRKPATRICK, John<br>CAPT/ NJ b 1728<br>d 4-1701822  |            |
| KNOX<br>Sarah   | 1751      | 6-2-1835    | PS/PA         | JOHNSTON, John   |            |
| LANE<br>Sarah Richardson  | 1732      | 7-8-1818    | PS/PA         | LANE Edward<br>PS/PA b 1723<br>d 8-27-1817<br>m. Sarah Richardson  |            |
| LANGSTON<br>Laodicea  | 1759      | 1837        | PS/SC         | SPRINGFIELD, Thomas  |            |
| LATHAN<br>Elizabeth<br>m (1) John Manley                                | 1728      | 1782        | PS/MD         | LATHAN, John (2d h.)   |            |
| LEA<br>Mary Sanders   | 1748      | 9-9-1821    | PS/VA         | LEA, Francis Wainwright<br>PS/PVT/VA b1741<br>d 3-1-1815<br>m Mary Sanders   |            |
| LEAR<br>Eve   | n.d.      | n.d.        | PS/PA         | PIPER (Peiffer)<br>George  |            |
| LEDYARD<br>Mary   | 7-3-1758  | 5-3-1806    | PS/CT         | FORMAN, Jonathan<br>L COL/NJ b 10-16-1755<br>d 5-25-1809<br>m (1) Margaret Wyckoff<br>(2) Mary Ledyard   |            |
| LEE<br>Agnes Dickinson  | 3-21-1745 | 7-2-1830    | PS/CT         | LEE, Samuel<br>LT/PS/CT<br>b 10-1-1742 d 5-31-1819<br>m Agnes <u>K</u> ickinson (sic)  |            |
| LEMANT<br>Jeannette Lemon   | 1768      | 10-8-1856   | PS/SC         | WALKER, William<br>SOL/SC b 1764<br>d 1-25-1841<br>m Jane Lemant   |            |
| LEMANT<br>Martha (Smythe)<br>m (1) James Lemant<br>(2) John Walker, Sr. | c 1741    | c 1808      | PS/SC         | LEMANT, James<br>PVT/NC b 1740 d 1780<br>m. Mary Smyth<br>WALKER, John, Sr.<br>PS/NC b 1727<br>d 10-24-1802<br>m (1) Jane<br>(2) Martha (Smyth) Lemant |            |

---

 WOMEN IN THE AMERICAN REVOLUTION
 

---

| NAME   | BIRTH  | DEATH      | SERVICE/STATE         | DATA RE HUSBAND  |
|--|--|------------|-----------------------|--|
| LIGON<br>Judith (Stewart)<br>m (1) Joseph Ligon<br>(2) James Ligon | c 1710   | between    | 11-2-1783<br>3-7-1784 | VA LIGON, Joseph, Sr.<br>CAPT/VA<br>b 1725<br>d p 1-27-1779                          |
| LIBBY<br>Rebecca Weston  | 1755-60  | 1- - 1819  | PS/ME/MA              | LIBBY, REUBEN<br>PVT/ MA<br>b 7- - 1745<br>d 7- - 1833<br>m Rebecca Weston           |
| LIVERMORE<br>Abigail Hagar   | 8-11-1725  | 1-17-1824  | PS/MA                 | LIVERMORE, Jason<br>PVT/MM/MA<br>b 12-1-1726<br>d 10-14-1797<br>m Abigail Hagar      |
| LONG<br>Sarah (Brown)  | 1718   | p. 1782    | PS/VA                 | LONG, Brumfill<br>(Brumfield)  |
| LOTT<br>Janette Probasko   | 1-24-1722  | 10-28-1802 | PS/NY                 | LOTT, Johannes   |
| LOVETT<br>Rebecca  | 6-1-1707   | 2-13-1787  | PS/MA                 | LOVETT, Joseph   |
| LUDINGTON,<br>Sibyl  | 16-year old Paul Revere - her story told in<br>WOMEN AND THE AMERICAN REVOLUTION, NSDAR, 1974, p.24-27. Markers<br>placed along her route in Putnam County, N.Y. by NSDAR. |            |                       |  |
| MAGGARD<br>Margaret  | c 1723   | p. 1785    | PS/VA                 | MAGGARD, David   |
| MARTIN<br>Elizabeth Marshall<br>m (1) John Smith, Jr.              | 3-1-1726   | p.5-2-1797 | PS/SC                 | MARTIN, Abraham<br>(2d husband)  |
| MARTIN<br>Maria Staats   | bpt 10-10-1744   | 1833       | PS/NY                 | MARTIN, Peter  |
| McBRIDE<br>Maggie  | 4-24-1769  | p. 1790    | PS/ NC                | STEWART, Robert  |
| McCALLA<br>Mary (Adair) Nixon<br>m (1) John NIXON                  | 1755   | 11-16-1807 | PS/NC                 | McCALLA, David<br>PVT/SC<br>b 1754 d 11-1-1826<br>m Mrs. Mary(Adair) Nixon           |
|  | NIXON, John b 1755   | d 1781     | LT COL/SC             | m. Mary Adair  |
| McCALLA<br>Sarah   | a 1755   | p 1781     | PS/PA                 | McCALLA, Thomas<br>PVT/SC/PA<br>b 9-16-1756<br>d 10-15-1811<br>m Sarah Wayne Gardner |

| WOMEN IN THE AMERICAN REVOLUTION  |           |           |               |      |   |
|---|-----------|-----------|---------------|------|---|
| NAME  | BIRTH     | DEATH     | SERVICE/STATE | DATA | RE HUSBAND  |
| <b>McCAULEY (McKOLLY)</b>   |           |           |               |      |   |
| Mary Ludwig Hays 1744 or 1754 3-31-1833 SOLDIER/Pa<br>known as MOLLY PITCHER, granted a pwnsion by PA State Legislature<br>First husband John or William Hay was a gunner in the PAartillery.<br>She substituted for her wounded husband during the Battle of Mon-<br>mouth on June 28, 1778. Nearly all agree she was born in Mercer<br>County, NJ, the daughter of John George Ludwig. Hays died when their<br>son John L. was about 5 yrs old (in 1787?). In 1792 she married<br>John (George?) McCaulley (McAuley, M'Kolly) in 1814, when Mary was<br>again a widow, she and her son conveyed property to one Joseph Lynd,<br>by a deed, dated February 1, 1814, "Between John L. Hays and Elizabeth<br>his wife and Mary McCalla--all of the Borough of Carlisle, County of<br>Cumberland and Commonwealth of Pennsylvania" ...<br>(Women and the American Revolution, pp 10-17) |           |           |               |      |   |
| <b>McCLURE</b>  |           |           |               |      |   |
| Mary Gaston   | 1712      | 1802      | PS/SC         |      | MCCLURE, James  |
| <b>McDONALD</b>   |           |           |               |      |   |
| Elizabeth   | 6-8-1726  | 1795      | PS/VA         |      | McDONALD, Joseph<br>Joseph, Sr. SOL/PS/VA<br>b 4-4-1722 d 2- - 1809<br>m Elizabeth Ogle |
| <b>McDONALD (Mac DONALD)</b>  |           |           |               |      |   |
| Susanna Ogle  | n.d.      | 3- - 1801 | PS/VA         |      | MacDONALD, Bryan<br>SOL/VA b 7-8-1732<br>d a 2-11-1777<br>m Susan (sic) Ogle            |
| <b>McDOWELL</b>   |           |           |               |      |   |
| Margaret O'Neal   | a.1723    | p.1780    | PS/NC         |      | McDOWELL, Joseph (Sr)<br>PS/NC b 1715 d 1775<br>m Margaret O'Neal                       |
| <b>McDOWELL</b>   |           |           |               |      |   |
| Mary McClung  | 1734      | 1826      | PS/VA/KY      |      | McDOWELL, Samuel (Sr)<br>COL/PS/VA<br>b 10-27-1735 d 9-25-1817<br>m Mary McClung        |
| <b>McEWEN</b>   |           |           |               |      |   |
| Margaret Houston  | 3-10-1758 | 9-2-1831  | PS/NC         |      | McEWEN, Alexander<br>PVT/NC<br>b 7-25-1750 d 8- -1795<br>m Margaret Houston             |
| <b>McMILLEN</b>   |           |           |               |      |   |
| Margaret  | c 1722    | p 1787    | PS/VA         |      | McMILLAN, James (Sr)<br>PVT/VA<br>c.1720 d 1-23-1793<br>m Margaret White                |
| <b>MELTON</b>   |           |           |               |      |   |
| Lettice   | c1730     | c 1786    | PS/VA         |      | MELTON, William   |
| <b>MILLER</b>   |           |           |               |      |   |
| Mary Heath  | c 1723    | p 1796    | PS/VA         |      | MILLER, William<br>CAPT/VA<br>b 1720 d 1815<br>m Mary Heath                             |

To be continued

## S.B.C.G.S. LIBRARY TAPES

by Hildred Ayersman

Our Society library has a valuable, but under used, research tool in its audio tape collection. Doris Martin, S.B.C.G.S. member, tapes the speakers at our monthly meetings and special seminars at the expense of the Society.

In an effort to encourage the use of the tapes, Doris has been working with the library committee in an attempt to see that the printed handouts, which accompanied some of the lectures, are a part of the library collection and can be used in conjunction with the tapes. Though these are incomplete, some progress has been made. She has also taped some of her private collection to fill in some of the gaps left when some tapes were stolen from the library.

If you have missed meetings, are a newcomer or if you just want to refresh your memory of the lectures you attended, you will find these a helpful way to catch up.

Tapes may be checked out of the library, along with printed handouts when available, for a two week period with renewal subject to demand for a particular selection. The librarian will be glad to assist you.

A list of the present collection follows. Future acquisitions will be listed in upcoming ANCESTORS WEST quarterlies under "What's New in the Library."

Basic Indexes - Bette Root Kott  
 Bermuda Research - Alva M. Hamilton  
 Canadian Research  
 Civil War - Alexander White  
 Doomesday Book - Dr. Katie Mac  
 English Records - Daphne Hill (4 tapes)  
 Genealogical & Historical Societies Uses -  
     Barbara Buckwater  
 Genealogical Sources (Q. & A.) - Ronald Bremer  
     (5 tapes)  
 Genealogical Tools & Indexes - Carl Boyer  
 German Records - John & Edna Bentz  
 German Research - Michael Palmer (3 tapes)  
 Handwriting - Eldene Whiting  
 Holland Land Records, N.Y. - Arlene Eakle  
     (3 tapes)  
 Immigration - Carl Boyer  
 Land Records - Jan Cloud  
 Law Library - Anita Cheek Milner

## LIBRARY TAPES LIST CONTINUED

Medieval Lecture - Alexander White  
 Membership Requirements for DAC, DAR, DUV of Civil  
 War & SAR  
 National Archive Records - Jan Cloud  
 New England Historical Society Talk, 24 April 1985  
 Dr. Crandall  
 Newspaper References - Anita Cheek Milner  
 Palatine Families, NY - Henry Z. Jones  
 Photography, Brooks Institute - Eugene Streeter  
 Records Used in Finding Missing Heirs -  
 Francis See  
 Revolutionary War Lecture - Alexander White  
 Southern Research - Afton E. Reintjes (4 tapes)  
 Swiss Genealogy - Sylvia Byers  
 Uniforms - Life of a Civil War Soldier - Civil War  
 Information

\* \* \* \* \*

We are saddened to report the death of an early President of the  
 Santa Barbara County Genealogical Society (1875-1976, Selma Bank-  
 head West (Bess West), a descendant of Thomas Jefferson.

\* \* \* \* \*

## AREAS OF GEOGRAPHICAL INTEREST EXPRESSED

Sampling results at November meeting: Pennsylvania 18; New York 15  
 Virginia 12 New England 8 + 1 Mass Ohio 8 Illinois 4 N J 4  
 Wisconsin 4 Iowa 3 Kentucky 3 Michigan 3 Nebraska 2 Indiana 2  
 1 each for California, Colorado, Delaware, Maryland, Missouri,  
 North Carolina, South Carolina, Minnesota Tennessee, Southern States  
 Ireland 7 (1 specifying Co. Cork and 1 Ulster) England 5, Scotland 5  
 Germany 5 Ontario, Canada 2, Sweden 2, Luxembourg 1 Czech. 1  
 This certainly evidences the wide variety of origins and interests.

## BOOK REVIEW

Atlas of County Boundary Changes in VIRGINIA 1634-1895,  
 by Michael F. Doran, 1987, Iberian Publishing Company,  
 61 pp., Reviewed by Carol Kosai

This atlas contains a preface, introduction, the  
 evolution of Virginia's first-order boundary,  
 crystallizing and stabilizing second-order boundaries,  
 extinct polities of Virginia and ogive of Virginia  
 county formation. The material is arranged from the  
 oldest to the newest information. There is no index,  
 which makes it a little difficult to use. However, I  
 did manage to trace the development of the one Virginia  
 area I have ascendants from, which enables me to trace  
 the family backwards or forwards in years. In this  
 case, I learned that Northumberland was formed from an  
 Indian reserve in 1648, it formed Westmoreland County in  
 1653 and Stafford County in 1664. There are easier ways  
 to trace county formation than this atlas. However, it  
 does present complete and accurate information and is  
 something anyone working extensively in Virginia will  
 want to become acquainted with.

## SANTA BARBARA COUNTY MARRIAGE RECORDS - 1914, con

Abstracted by SBOGS member Doris Crawford from microfilm records

| BRIDE/GROOM                    | AGE | RESIDENCE     | (BORN)          | MARRIAGE               | DATE/PLACE                |
|--------------------------------|-----|---------------|-----------------|------------------------|---------------------------|
| ADAMS, Flora                   | 35  | San Francisco | CA CA           | 1914                   | 18 Nov S. B.              |
| Joseph POOLE                   | 34  | San Francisco | CA (IL)         | Warren D. Moore,       | Presby. Ch.               |
| ALBROSKAY, Mabel               | 23  | Iowa City,    | IA (IA)         |                        | 22 Dec S. B.              |
| Charles Henry BROWN            | 32  | Oxnard,       | CA (NY)         | Jacob G. Shoup,        | J.P. 2d Jud Twp.          |
| ALLEN, Walter Herbert          | 21  | S. B.         | (MA)            |                        | 19 Dec S. B.              |
| Ruth BELL                      | 18  | S. B.         | (CA)            | Geo.C. Wright,         | Minister Gospel           |
| ANGLE, Arthur Willard          | 22  | Santa Ana     | CA (CA)         |                        | 21 Dec S. B.              |
| Dora Jane CLAPP                | 16  | Santa Ana     | CA (CA)         | Jacob G. Shoup,        | J. P.                     |
| Elmer Clapp, father,           |     | consenting.   |                 |                        | Second Jud. Twp.          |
| ARNOLD, Dillard Leroy          | 31  | Goleta,       | CA (MO)         |                        | 29 Nov Goleta             |
| Effie Gertrude BAILEY          | 28  | Goleta        | (MO)            | Ernest E. Fairchild,   | Clergyman                 |
| ARNOLD, Iris Louise            | 29  | Ventura,      | CA (LA)         |                        | 18 Nov S. B.              |
| Nat Lucas BARRIOS              | 29  | Ventura,      | CA (CA)         | J. G. Shoup,           | J. P.                     |
| BAILEY, Effie Gertrude         | 28  | Goleta,       | CA (MO)         |                        | 29 Nov Goleta             |
| Dillard Leroy ARNOLD           | 31  | Goleta,       | CA (MO)         | Erenest E. Fairchild,  | Clergy.                   |
| BAILEY, Lillian Ella           | 19  | S. B.         | (ENG)           |                        | 3 Dec S. B.               |
| Theodore James REED            | 21  | Carpinteria   | (CA)            | Jacob G. Shoup,        | J. P.                     |
| BARRIE, Elizabeth Sharp        | 32  | Chicago,      | ILL.(MO)        |                        | 31 Dec S. B.              |
| Howard Morris JOHNSON          | 33  | Montecito     | (NY)            | Benjamin A. Goodridge, | Minister                  |
| BARRIOS, Nat Lucas             | 29  | Ventura,      | CA (CA)         |                        | 18 Nov S. B.              |
| Iris Louise ARNOLD             | 29  | Ventura,      | CA (LA)         | J. G. Shoup,           | J. P. 2d Jud Twp.         |
| BEAN, Glenn Leon               | 26  | Goleta,       | CA (KA)         |                        | 30 Dec Goleta             |
| Lela Marten                    | 23  | Goleta,       | CA (NC)         | Rev. Claude C. Douglas |                           |
| BEAN, Martha Jane Briggs       | 50  | S. B.         | (MA)            |                        | 1 Dec S. B.               |
| Frank FIELD                    | 51  | S. B.         | (CA)            | Jacob G. Shoup,        | J. P.                     |
| BELL, Ruth                     | 18  | S. B.         | (CA)            |                        | 19 Dec S. B.              |
| Walter Herbert ALLEN           | 21  | S. B.         | (MA)            | Geo.C.Wright,          | Minister Gospel           |
| BOTTAINI, Giovanni Domenico    | 32  | S. B.         | (France)        |                        | 13 Dec S. B.              |
| Lillian May KELCH              | 22  | S. B.         | (CA)            | Rev.Octavius Villa,    | S.J.                      |
| BROWN, Charles Henry           | 32  | Oxnard,       | CA (NY)         |                        | 22 Dec S. B.              |
| Mabel ALBROSKAY                | 23  | Iowa City,    | IA (IA)         | Jacob G. Shoup,        | J. P.                     |
| CHAVES, Antonio Cabral         | 24  | Sta.Maria,    | CA(Azores)      |                        | 30 Nov Santa Maria        |
| Francisca Dutra MARTINS        | 18  | Sta. Maria    | (CA)            | Rev.Manuel F. Cordeiro | R.C.P                     |
| CLAPP, Dora Jane               | 16  | Santa Ana,    | CA (CA)         |                        | 21 Dec S. B.              |
| Arthur Willard ANGLE           | 22  | Santa Ana,    | CA (CA)         | Jacob G. Shoup,        | J. P.                     |
| Elmer Clapp, father,           |     | consenting.   |                 |                        | Second Jud. Twp.          |
| COLE, Edna Kingsley            | 32  | Seattle,      | WA (PA)         |                        | 24 Dec S. B.              |
| Everett Hardy MERRILL          | 30  | Roberts,      | L.A.Cb. CA (CA) | Wm. Cross Merrill,     | 1st Congregational Church |
| CORRAL, Francisca              | 21  | S. B.         | (Mexico)        |                        | 17 Dec S. B.              |
| Marcos SANCHEZ                 | 29  | S. B.         | (Mexico)        | Antonio Jimenez,       | Mln.Gospel                |
| CRAFT, Lillian I.              | 17  | Lompoc,       | CA (CA)         |                        | 24 Dec Ballard,CA         |
| Frank Adolph SCARONI           | 24  | Lompoc,       | CA (OR)         | Alexander Buckler,     | Rector                    |
| L. A. Craft, father,           |     | consenting    |                 |                        | Old Mission Santa Ines    |
| DAVIS, Glen Albert             | 21  | S. B.         | (CA)            |                        | 29 Nov Goleta             |
| Grace Lasylyvia MOORE          | 16  | Goleta        | (MO)            | Thos.M. Rickman,       | Pastor                    |
| Minnie May Moore, mother,      |     | consenting    |                 |                        | Baptist Church            |
| DEISTER, Henry Kossurh         | 24  | Los Angeles   | (KS)            |                        | 28 Nov S. B.              |
| Louise KNOLL                   | 21  | S. B.         | E.A. Rizer,     | Police Judge           |                           |
| DELOREY, Simon                 | 41  | S. B.         | (NY)            |                        | 16 Nov Lompoc             |
| Nellie IVISON                  | 38  | S.B.          | (n.d.)          | F. A. Mann,            | J.P. 5th J.T.             |
| DESJARDINS, Dorothea Christine | 32  | Venice,       | CA (Germany)    |                        | 27 Dec S. B.              |
| Jacob ELMAN                    |     | 32 Venice,    | CA (Russia)     | W.H.Wheaton,           | J. P.                     |
| DOMINGOS, Jose Pereira         | 31  | Los Alamos    | (Portugal)      |                        | 18 Nov Lompoc             |
| Lunilda NUNES                  | 17  | Lompoc        | (Portugal)      | C.N.Raley,             | Priest, Lompoc            |
| Francisco G. Nunes, father,    |     | consenting.   |                 |                        |                           |

| BRIDE/GROOM                         | AGE | RESIDENCE                  | CITY  | MARRIAGE DATE/PLACE     |
|-------------------------------------|-----|----------------------------|---|-------------------------|
| DOMINGUEZ, Solomon                  | 24  | S. B. (CA)                 |   | 1914 9 Dec S. B.        |
| Margaret MOCCRIDGE                  | 25  | S. B. (CA)                 | H. E. Taverrier, S. J.                          |                         |
| DONOHUE, Edward Peter               | 45  | Solvang, CA(CA)            |   | 18 Nov S. B.            |
| Susan TAYLOR                        | 38  | S. B. (CA)                 | Rev. Octavius Villa, S. J.                      |                         |
| DUFFY, Homer Nelson, Jr.            | 19  | S. B. (CA)                 |   | 19 Nov S. B.            |
| Irma Hazel HARRITT                  | 20  | S. B. (CA)                 | Geo.C.Wright, Minister, Gospel                  |                         |
| Addie S. Duffy, mother, consenting. |     |                            |   |                         |
| ELMAN, Jacob                        | 32  | Venice, CA (Russia)        |   | 27 Dec S. B.            |
| Dorothea Christine DESJARDINS       | 32  | Venice, CA (Germany)       | W.H.Wheaton, J.P.                               |                         |
| FIELD, Frank                        | 51  | S. B. (CA)                 |   | 1 Dec S. B.             |
| * Martha Jane Briggs BEAN           | 50  | S. B. (MA)                 | Jacob G. Shoup, J. P.                           | 2d J. Twp.              |
| GREGG, Richard Monroe               | 21  | S. B. (CA)                 |   | 22 Dec S. B.            |
| Rose NOVACK                         | 21  | S. B. (IL)                 | Jacob G. Shoup, J. P.                           |                         |
| GROSSI, Edna                        | 17  | Orcutt (CA)                |   | 17 Dec Santa Maria      |
| John William SANTERS                | 26  | Orcutt (CA)                | L.J. Morris, J. P.                              |                         |
| Elisa Grossi, mother, consenting.   |     |                            |   |                         |
| HAMLIN, David E.                    | 72  | Lompoc (NY)                |   | 22 Nov Lompoc           |
| Sophie LILLIE                       | 45  | Lompoc (NY)                | Rev. F. Z. King                                 |                         |
| HARRITT, Irma Hazel                 | 20  | S. B. (CA)                 |   | 19 Nov S. B.            |
| Homer Nelson DUFFY, Jr.             | 19  | S. B. (CA)                 | Geo.A.Wright, Minister, Gospel                  |                         |
| Addie S. Duffy, mother, consenting. |     |                            |   |                         |
| HEELAN, Thomas Alious               | 29  | S. B. (NJ)                 |   | 5 Dec S. B.             |
| Lena M. REEDY                       | 28  | Goleta (CA)                | Jacob G. Shoup, J. P.                           | 2d J. Twp.              |
| HICKEY, Howard Louis                | 19  | Hope District, S.B. (CA)   |   | 25 Nov Hope Dist., S.B. |
| Clara Martha TRIPLETT               | 22  | Grinell, Iowa (IA)         | Rev. Warren D. More                             |                         |
| C. C. Hickey, father, consenting.   |     |                            |   |                         |
| INGRAM, William Donald              | 35  | S. B. (Scot.)              |   | 26 Nov S. B.            |
| Mary Ann Miller Irvine PIETZ        | 29  | S. B. (Scot)               | Rev. George Philip Goll                         |                         |
| IVISON, Nellie                      | 38  | S. B. (NY)                 |   | 16 Nov Lompoc           |
| Simon DELOREY                       | 41  | S. B. (Canada)             | F.A. Mann, J. P.                                | 5th J. Tp.              |
| Jimenez, Lola                       | 19  | Carpinteria (CA)           |   | 28 Nov S. B.            |
| Augustine Charles MARTINEZ          | 23  | Carpinteria (CA)           | Joseph G. Shoup, J. P.                          |                         |
| JOHNSON, Howard Morris              | 33  | Montecito (NY)             |   | 31 Dec S. B.            |
| Elizabeth Sharp BARRIE              | 32  | Chicago, Ill. (MO)         | Benjamin A. Goodridge, Min.                     | Gospel                  |
| KELCH, Lillian May                  | 22  | S. B. (CA)                 |   | 13 Dec S. B.            |
| Giovani Domenico BOTTAINI           | 32  | S. B. (France)             | Rev. Octavius Villa, S.J.                       |                         |
| KNOLL, Louise                       | 21  | S. B. (CA)                 |   | 28 Nov S. B.            |
| Henry Kossuth DEISTER               | 24  | Los Angeles (KS)           | E.A. Rizer, Police Judge                        |                         |
| LILLIE, Sophie                      | 45  | Lompoc (NY)                |   | 22 Nov Lompoc           |
| David E HAMLIN                      | 72  | Lompoc (NY)                | Rev. F. Z. King                                 |                         |
| * LYNCH, James Francis              | 43  | Guanajuata, Mexico (CA)    |   | 22 Dec S. B.            |
| Ella Marguerita REYNOLDS            | 39  | S. B. (IND)                | Jacob G. Shoup, J. P.                           |                         |
| MADSEN, Christian                   | 24  | Lompoc (Denmark)           |   | 24 Dec S. B.            |
| Hattie Mae McMURDO (n.d.)           |     | Lompoc (Neb)               | Warren D. More, Presbyterian Ch.                |                         |
| MARTIN, Lela                        | 23  | Goleta (NC)                |   | 30 Dec Goleta           |
| Glenn Leon BEAN                     | 26  | Goleta (KS)                | Rev. Claude C. Douglas                          |                         |
| MARTINS, Francisca Dutra            | 18  | Sta. Maria (CA)            |   | 30 Nov Santa Maria      |
| Antonio Cabral CHAVES               | 24  | Sta. Maria (Azores)        | Rev. Manuel F. Codeiro<br>Roman Catholic Priest |                         |
| McMURDO, Hattie Mae (n.d.)          |     | Lompoc (Neb)               |   | 24 Dec S. B.            |
| Christian MADSEN                    | 21  | Lompoc (Denmark)           | Warren D. More, Presby. Ch.                     |                         |
| MARTINEZ, Augustine Charles         | 23  | Carpinteria (CA)           |   | 28 Nov S. B.            |
| Lola Jimenez                        | 19  | Carpinteria (CA)           | Jacob G. Shoup, J. P.                           |                         |
| MERRILL, Everett Hardy              | 30  | Roberts, L.A. Co., CA (CA) |   | 24 Dec S. B.            |
| Edna Kingsley COLE                  | 23  | Seattle, WA (PA)           | William Cross Merrill, Congr.                   |                         |
| * GARCIA de SILVEIRA, Manuel        | 27  | Santa Maria (Portugal)     |   | 28 Nov S. Maria         |
| Lena Izabe NUNES                    | 18  | Santa Maria (Portugal)     | Rev. Manuel F. Cordeiro                         |                         |
| * LUCADELLO                         |     |                            |   | see next page           |



## SANTA BARBARA COUNTY MARRIAGE RECORDS 1914 con

| BRIDE/GROOM                   | AGE | RESIDENCE              | (BORN) | MARRIAGE DATE/PLACE                |
|-------------------------------|-----|------------------------|--------|------------------------------------|
| MATTISON, Helen Rika          | 28  | S. B.                  | (MN)   | 30 Dec S. B.                       |
| Zeak Paul MORSE               | 28  | S. B.                  | (KS)   | William Cross Merrill, Congre. Ch  |
| MOGGRIDGE, Margaret           | 25  | S. B.                  | (CA)   | 9 Dec S. B.                        |
| Solomon DOMINQUEZ             | 24  | S. B.                  | (CA)   | H. E. Taverrier, S. J.             |
| MOORE, Grace Lasylyvia        | 16  | Goleta                 | (MO)   | 29 Nov Goleta                      |
| Glen Albert DAVIS             | 21  | S. U.                  | (CA)   | Thos. M. Rickman, Pastor           |
| Minnie May Moore, mother,     |     | consenting.            |        | Baptist Church                     |
| MORSE, ZEAk Paul              | 28  | S. B.                  | (KS)   | 30 Dec S. B.                       |
| Helen Rika MATTISON           | 28  | S. B.                  | (MN)   | William Cross Merrill, 1st Congre. |
| NOVACK, Rose                  | 21  | S. B.                  | (IL)   | 22 Dec S. B.                       |
| Richard Monroe GREGG          | 21  | S. B.                  | (CA)   | Jacob G. Shoup, J. P.              |
| NUNES, Lena Izabel            | 18  | Sta. Maria             | (CA)   | 28 Nov Santa Maria                 |
| Manuel Garcia de SILVEIRA     | 27  | Sta. Maria (Portugal)  |        | Rev. Manuel F. Cordeiro            |
| Also indexed under GARCIA     |     |                        |        | Roman Catholic Priest              |
| NUNES, Lunilda                | 17  | Lompoc (Portugal)      |        | 18 Nov Lompoc                      |
| Jose Pereira DOMINGOS         | 31  | Ios Alamos (Portugal)  |        | C. N. Raley, Priest,               |
| Francisco G. Nunes, father,   |     | consenting.            |        | Lompoc                             |
| PIETZ, Mary Ann Miller Irvine | 29  | S. B. (Scot)           |        | 26 Nov S. B.                       |
| William Donald INGRAM         | 35  | S. B. (Scot)           |        | Rev. George Philip Goll            |
| POOLE, Joseph                 | 34  | San Francisco, CA      | (ILL)  | 18 Nov S. B.                       |
| Flora ADAMS                   | 35  | San Francisco          | (CA)   | Warren D. More, Presby. Ch.        |
| REED, Theodore James          | 21  | Carpinteria            | (CA)   | 3 Dec S. B.                        |
| Lillian Ella BAILEY           | 19  | S. B.                  | (ENG)  | Jacob G. Shoup, J. P.              |
| REEDY, Leona M.               | 28  | Goleta                 | (CA)   | 5 Dec S. B.                        |
| Thomas Alious HEELAN          | 29  | S. B.                  | (NJ)   | Jacob G. Shoup, J. P.              |
| REYNOLDS, Ella Marguerita     | 39  | S. B.                  | (IND)  | 22 Dec S. B.                       |
| James Frances LYNCH           | 43  | Guanajuata, Mexico     | (CA)   | Jacob G. Shoup, J. P.              |
| SANCHEZ, Marcos               | 29  | S. B. (Mexico)         |        | 17 Dec S. B.                       |
| Francisca CORRAL              | 21  | S. B. (Mexico)         |        | Antonio Jimenez, Min. Gospel       |
| SANTOS, John William          | 26  | Orcutt                 | (CA)   | 17 Dec Santa Maria                 |
| Edna GROSS†                   | 17  | Orcutt                 | (CA)   | L. J. Morris, J. P.                |
| Elisa Gross†, mother,         |     | consenting.            |        |                                    |
| SCARONI, Frank Adolph         | 24  | Lompoc                 | (OR)   | 24 Dec Ballard                     |
| Lillie I. CRAFT               | 17  | Lompoc                 | (CA)   | Alexander Buckler, Record          |
| L. A. Craft, father,          |     | consenting.            |        | Old Mission Santa Ines             |
| SILVEIRA, Manuel Garcia de    | 27  | Santa Maria (Portugal) |        | 28 Nov S. Maria                    |
| Lena Izabel NUNES             | 18  | Santa Maria            | (CA)   | Rev. Manuel F. Cordeiro            |
|                               |     |                        |        | Roman Catholic Priest              |
| SOMMER, Emma                  | 25  | Gonzales, Monterey Co. | (CA)   | 21 Nov S. B.                       |
| Fred Earl WIDEMANN            | 27  | Gonzales, Monterey Co. | (CA)   | George C. Wright, Min. Gos.        |
| TABACCI, Luisa                | 18  | S. B. (Italy)          |        | 6 Dec S. B.                        |
| Peter LUCADELLO               | 25  | S. B. (Italy)          |        | Rev. Octavisu Villa                |
| TAYLOR, Susan                 | 38  | S. B. (CA)             |        | 18 Nov S. B.                       |
| Edward Peter DONAHUE          | 45  | Solvang                | (CA)   | Rev. Octavisu Villa, S. J.         |
| THOMPSON, George Newborn      | 65  | S. B. (Tenn)           |        | 31 Dec S. B.                       |
| Evelyn Frances WEST           | 35  | Painesville, OH        | (OH)   | Jacob G. Shoup, J. P.              |
| TRIPLETT, Clara Martha        | 22  | Grinnell, IA           | (IA)   | 25 Nov Hope Dist. S. B.            |
| Howard Louis HICKEY           | 19  | Hope District, S. B.   | (CA)   | Rev. Warren D. More                |
| C. C. Hickey, father,         |     | consenting.            |        |                                    |
| WEST, Evelyn Frances          | 35  | Painesville, OH        | (OH)   | 31 Dec S. B.                       |
| George Newborn THOMPSON       | 65  | S. B. (TENN)           |        | Jacob G. Shoup, J. P.              |
| WIDEMANN, Fred Earl           | 27  | Gonzales, Monterey Co. | (CA)   | 21 Nov S. B.                       |
| Emma SOMMER                   | 25  | Gonzales, Monterey Co. | (CA)   | George C. Wright, Minister         |
| * LUCADELLO, Peter            | 25  | S. B. (Italy)          |        | 6 Dec S. B.                        |
| Luisa TABACCI                 | 18  | S. B. (Italy)          |        | Rev. Octavisu Villa                |

## SANTA BARBARA COUNTY MARRIAGE RECORDS 1915

| BRIDE/GROOM              | AGE | RESIDENCE       | (BORN)     | MARRIAGE DATE/PLACE                              |
|--------------------------|-----|-----------------|------------|--|
| ANDERSON Annetta         | 20  | Goleta          | (CA)       | 1915 6 Jan Goleta                                |
| * Thomas Belt JAMISON    | 27  | Carpinteria     | (CA)       | Warren D. Moore, Presby. Ch                      |
| ANDREWS, Donald          | 30  | Carpinteria     | (WI)       | 1 Jan Carpinteria                                |
| Mildred THURMOND         | 23  | Carpinteria     | (CA)       | Anderson Crain, Presbyterian Ch.                 |
| CALDERON, Olympia M.     | 24  | Sisquoc         | (CA)       | 11 Jan Santa Maria                               |
| Frank R. GOODCHILD       | 28  | Sisquoc         | (CA)       | Rev. John Coen                                   |
| GOODCHILD, Frank R.      | 28  | Sisquoc         | (CA)       | 11 Jan Santa Maria                               |
| Olympia M. CALDERON      | 24  | Sisquoc         | (CA)       | Rev. John Coen                                   |
| HERRERA, Mariana         | 41  | San Luis Obispo | (CA)       | 4 Jan S. B.                                      |
| Pedro Alvarez MARQUEZ    | 51  | S. B. (Mexico)  |            | L. D. Ruiz, Minister, Gospel                     |
| JAMISON, Thomas Belt     | 27  | Carpinteria     | (CA)       | 6 Jan Goleta                                     |
| Annetta ANDERSON         | 20  | Goleta          | (CA)       | Warren D. More, Presby Ch                        |
| JIMENEZ, Josefa          | 15  | Carpinteria     | (CA)       | 13 Jan Montecito                                 |
| John MORELLI             | 20  | Carpinteria     | (CA)       | Rev. A. Serra, Pastor                            |
| Peter Jimenez, father,   |     | consenting.     |            | Carmelo Church                                   |
| MARQUEZ, Pedro Alvarez   | 51  | S. B. (Mexico)  |            | 4 Jan S. B.                                      |
| Mariana HERRERA          | 41  | San Luis Obispo | (CA)       | L. D. Ruiz, Minister Gos.                        |
| MORELLI, John            | 20  | Carpinteria     | (CA)       | 13 Jan Montecito                                 |
| Josefa JIMENEZ           | 15  | Carpinteria     | (CA)       | Rev. A. Serra, Pastor                            |
| Peter Jimenez, father,   |     | consenting.     |            | Carmelo Church                                   |
| PIMENTEL, Mary           | 26  | Santa Maria     | (Portugal) | 7 Jan Guadalupe                                  |
| Jose Thomas SILVA        | 26  | Santa Maria     | (Port.)    | Rev. Manuel F. Cordeiro<br>Roman Catholic Priest |
| REID, Mena               | 36  | Santa Ana, CA   | (MO)       | 3 Jan S. B.                                      |
| Raynold Edgar SHAFFER    | 27  | Cashmere, WA    | (IA)       | Rev. S. F. Bicker                                |
| SANDS, Robert            | 38  | San Luis Obispo | (CA)       | 11 Jan S. B.                                     |
| Alice Irene WAYNE        | 29  | San Luis Obispo | (OR)       | W. H. Wheaton, J. P.                             |
| * SILVA, Jose Tjomas     | 26  | Santa Maria     | (Portugal) | 7 Jan Guadalupe                                  |
| Mary PIMENTAL            | 26  | Santa Maria     | (Portugal) | Rev. Manuel F. Cordeiro<br>Roman Catholic Priest |
| THURMOND, Mildred        | 23  | Carpinteria     | (CA)       | 1 Jan Carpinteria                                |
| Donald ANDREWS           | 30  | Carpinteria     | (WI)       | Anderson Crain, Presby. Ch.                      |
| WAYNE, Alice Irene       | 29  | San Luis Obispo | (OR)       | 11 Jan S. B.                                     |
| Robert SANDS             | 38  | San Luis Obispo | (CA)       | W. H. Wheaton, J. P.                             |
| * SHAFFER, Raynold Edgar | 27  | Cashmere        | (IA)       | 3 Jan S. B.                                      |
| Mena REID                | 38  | Santa Ana, CA   | (CA)       | Rev. S. F. Bicker                                |

\* \* \* \* \*

## SURNAME INDEX CARDS

Available from Carol Hamilton. She wishes cards supplied by her committee to be used. Three boxes of members' cards are now in the Library and usually displayed on the window sill.

## INSTRUCTIONS

1. Fill out a card for each family surname you want on file. If you have two or more lines of the same surname, use additional cards.
2. Type or print surname and submitter's code number at the top of the card. The membership roster now has your code number.
3. List the first name of the most recent ancestor of your line you wish to submit. No siblings. Fill in the year only of any known events. Use abbreviations provided for states and countries. Counties may be added just below.
4. RETURN COMPLETED CARDS as soon as possible. RETURN ANY UNUSED CARDS. Obtain names of committee members from Carol Hamilton home phone 963-9005 work 968-9621, ext. 412.

## NEW IN THE LIBRARY

## BOOKS PURCHASED BY OUR SOCIETY

1. 10,000 Vital Records of Eastern New York 1777-1834 by Fred Bowman.
2. South Carolina Naturalizations 1783-1850 by Brent H. Holcomb.
3. Genealogies of Rhode Island Families Vol. I & II. Indexed by Robert and Catherine Barnes.
4. The Pennsylvania-German in Maryland by Daniel Wunderlich Nead.
5. Our Quaker Ancestors by Ellen Thomas Berry and David Allen Berry.
6. Marriages of Some Virginia Residents 1607-1800 by Dorothy Ford Wulfeck. Vol. I & II.
7. A Guide to Jewish Genealogical Research by Sally Amdur Sack

## OTHER NEW BOOKS

1. Cemeteries of Jackson County, Illinois, Vol.VI. Pomona Township. Compiles by Jackson Co. Hist. Soc.
2. Cemeteries of Elk Township. Compiled by W. G. Richson.
3. Seven Generations Chart San Fernando Valley Gen. Soc. 1987. Donated by Janet Paine Reed.
4. Hints and Helps in Roaming Ancestral Pastures by Fannie M. Hilton. Donated by Ruth Cleland.
5. Genealogical Classifications by Family Group coding. Vol.I&II. by Cameron R. Stewart.
6. Genealogical Periodical Annual Index. Vol.25, 1986.
7. Atlas of County Boundary Changes in Virginia 1634-1859 by Michael F. Doran.

## PAMPHLET

1. Catalog of Gen. Material 1985,1986,1987 by Judith Allison Walters. Donated by Emily Thies.
2. Stagecoach Bulletin for Genealogists. July-Aug.1987.

## NEW EXCHANGES AND PERIODICALS

- ALABAMA: Alabama Fam. Hist. and Gen. News. Vol.8:3,4, 1987.
- ARIZONA: Sun City Genealogist. Summer 1987.
- AUSTRALIA: Ancestral Searcher. June 1987.
- BELGIUM: Vlaamse Stam. #6,7,8, 1987.
- CALIFORNIA: Ash Tree Echo. Vol.XXII:4, 1987.  
 Central Coast Gen. Soc. Fall 1987.  
 Golden Roots of the Mother Lode. Spring 1987.  
 Memet-San Jacinto Gen. Soc. Valley Genealogist Vol.9:1, 1987.  
 Immigrant Gen. Soc. Newsletter. #49,50,51, 1987.  
 Lifeliner. Sept. 1987.  
 Madera Heritage Quarterly. Nov. 1987.

- Marin Kin Tracer. Fall 1987.  
 Orange Co. Quart. Sept. 1987.  
 Rabbit Tracks. Spring, Summer, 1987.  
 Redwood Researcher. Aug. 1987.  
 Root Digger. Fall 1987.  
 Valley Quarterly from San Bernardino Valley  
   Gen. Soc. Vol.3:1-4, 1964; Vol.4:1-4, 1965;  
   Vol.5:1,4, 1968; Vol.6:1, 1969; Vol.9:2,  
   3,4, 1972; Vol.10:1-4, 1973; Vol.11:1-4,  
   1974; Vol.12:2,3,4, 1975; Vol.13:1-4, 1976;  
   Vol.14:2,3,4, 1977; Vol.15:1-4, 1978; Vol.  
   16:2,4, 1979; Vol.17:1-4, 1980; Vol.18:2,  
   3, 1981; Vol.19:1-4, 1982; Vol.20:1-4, 1983  
   Vol.21:2,3,4, 1984; Vol.22:1,2,3, 1985.  
 San Fernando Valley Gen. Soc. Bulletin. Sept.  
   1987, Oct. 1987.  
 Santa Maria Valley Gen. Soc. & Library. Fall  
   & Winter 1987.  
 Searcher. Sept., Oct., Nov., 1987.  
 Sonora Searcher. Sept. 1987.  
 Trails West. Spring 1987.  
 Ventura Co. Gen. Soc. Quart. June 1987.  
 Pinon Whispers. Fall, Winter, 1987.  
**COLORADO:**  
**CONNECTICUT:** Connecticut Nutmegger. Sept. 1987. Donated  
   by Emily Thies.  
**ENGLAND:** Banyan Tree. #31, 1987.  
   Cleveland Fam. Hist. Soc. Journal. July 1987.  
   Essex Family Hist. Summer, 1987.  
   Family History & News Digest. Vol.6:2, 1987.  
   Greenwood Tree. Summer 1987.  
   Hertfordshire People. Summer 1987.  
   Journal of Bristol and Avon Family Hist.  
   Soc. Autumn 1987.  
   Wiltshire Fam. Hist. Soc. July 1987.  
**FLORIDA:** Geneagram. Sept., Oct. 1987.  
   Keystone Kin. Oct. 1987.  
   Rota-Gene. Aug., Sept., Oct. 1987.  
**GEORGIA:** Ancestors Unlimited. Sept. 1987.  
   Central Georgia Gen. Soc. Quart. June 1987.  
**ILLINOIS:** DeWitt Co. Quart. Summer 1987.  
   Saga of Southern Illinois. Vol.XI:2,3; Vol.  
   XII:2,3,4; Vol.XIII:1,2,3; Vol.XIV:1. Don-  
   ated by Barbara Hubbs.  
   Stalker. Oct. 1987.  
**INDIANA:** South Bend Area Gen. Soc. Quart. Summer 1987  
**IOWA:** American Genealogist. Vol.62:3. Donated by  
   Emily Thies.  
   The Ill-Ia-Mo Searcher. Vol.15:4.  
**KANSAS:** Kansas Kin. Aug. 1987.  
   Midwest Hist. & Gen. Register. July, Aug.  
   & Sept.  
**KENTUCKY:** The Longhunter. Autumn 1987.  
**LOUISIANA:** Le Baton Rouge. Aug. 1987.  
**MASSACHUSETTS:** Car-Del Scribe. July 1987.  
   Mayflower Quarterly. Aug. 1987. Donated by  
   Emily Thies.  
   New England Hist. Gen. Register. July 1987.  
   Donated by Emily Thies.

- MAINE: Downeast Ancestry. Vol.11:2,3, 1987. Donated by Ruth Scollin.  
 Second Boat. Vol.8:3, 1987. Donated by Ruth Scollin.
- MISSOURI: Ozack Happenings Newsletter. July - Aug. 1987.  
 Platte Co. Gen. Soc. Quart. Vol.40:3, 1987.
- NEBRASKA: Ancestors Unlimited. July-Aug. 1987.  
 Prairie Pioneer. Aug., Oct. 1987.
- NEW HAMPSHIRE: Kinship Kronicle. Sept. 1987.
- NEW MEXICO: New Mexico Genealogist. Sept. 1987.
- NORTH CAROLINA: Eswau Huppeday. Aug. 1987.
- OHIO: Certified Copy. Vol. 16:1,2, 1987.  
 Licking Lantern. Sept. 1987. Donated by Emily Thies.  
 Report. Summer, Fall 1987. Donated by Emily Thies.
- OKLAHOMA: Pontotoc Co. Quart. Vol.18:4; Vol.19:1; 1987.
- OREGON: Oregon Gen. Soc. Quart. Summer 1987.  
 Yamhill Co. Timber Trails. Oct. 1987.
- PENNSYLVANIA: Laurel Messenger. Aug. 1987.
- SOUTH DAKOTA: South Dakota Gen. Soc. Quart. Vol.5:2,3,4; 1987. Donated by Jan Cloud.
- TEXAS: A Tale of Mid-Cities. Winter 1987.  
 Austin Gen. Soc. Sept. 1987.  
 Cypress Basin. Vol.IX:3,4; 1987.  
 Dallas Quarterly. Sept. 1987.  
 Footprints. Aug. 1987.  
 Herald. Vol. 10:3; 1987.  
 Coastal Bend Gen. Soc., Reflections. Mar. 1987.  
 Victoria - Crossroads of South Texas. Fall 1987.  
 Yellowed Pages. Vol.XVII:2,3; 1987.
- UTAH: Genealogical Computing. Vol.7:2; 1987.  
 Genealogical Helper. Vol.41:4,5; 1987.
- VERMONT: Branches and Twigs. Vol. 16:3; 1987.
- WASHINGTON: The Clan Digger. Sept., Oct. 1987.  
 Hacksma House Gen. Hotline. July-Aug. 1987.  
 Heritage Quest. July, Oct. 1987.  
 Seattle Gen. Soc. Bulletin. Vol. 37:1,1987.  
 Whatcom Gen. Soc. Bulletin. Fall 1987.
- WISCONSIN: Genealogical Gems. Summer 1987.  
 Nuggets. Sept. 1987.

\* \* \* \* \*

Helen Rydell has been receiving mail requests regarding research for the past year and has made photocopies from which Carol Kosal intends to evolve queries. Probably will commence in the March 1988 issue of ANCESTORS WEST. Several from England illustrate the desirability of supplying the FAMILY HISTORY NEWS AND DIGEST with abstracts of the contents of each issue of ANCESTORS WEST. This service was rendered by the Editor several times, but a volunteer to perform this service would provide our Society with wider participation from out-of-Santa Barbara County readers. A letter inquiring about a Newsletter of the Disney Family Association, formed by Walt Disney, mentioned seeing a report of an article in the December 1980 ANCESTORS WEST on a journey by covered wagon in 1895 from Central City, Nebraska to the Dalles, Oregon. Inquiry re Hugh Disney's great aunt who crossed the U.S.A. by covered wagon with her new husband to his ranch near Santa Rosa, Sonoma County, California. Found answers to his questions.

EXCHANGE QUARTERLY NOTICES

EASTERN WASHINGTON GENEALOGICAL SOCIETY

P. O. Box 1826

Spokane, Washington 99210

MEMBERSHIP: \$6. per yr. Couples \$8. Get big 50-page Quarterly "BULLETIN". Includes Northwest data, National and International features. FREE QUERIES to members. Offers to swap for similar equal value: TOMBSTONE INSCRIPTIONS, Stevens County, Washington, \$6.50; Adams and Pend Oreille County, Washington \$5.00; Lincoln County Washington \$6.50; Whitman County, 3 vols. each \$5.00

\*\*\*\*\*

SOUTHEAST TEXAS GENEALOGICAL AND HISTORICAL SOCIETY

P. O. Box 3827

Beaumont, TEXAS 77704

MEMBERSHIP \$7.50 per yr., includes 4 issues of YELLOWED PAGES  
Offering: Jefferson Co., Texas Marriages 1837-1899 \$10.50  
Hardin County, Texas Cemeteries (272 pp) 15.50  
Yellowed Pages, Vols. I through V, each \$8.00

\*\*\*\*\*

PACIFIC COUNTY GENEALOGICAL SOCIETY, P.O. Box 1024

Monthly Publication CLAN. DIGGER Long Beach, WA 98631

\*\*\*\*\*

SEATTLE GENEALOGICAL SOCIETY

Box 549, Seattle WA 98111

HOW-TO FLYER to include your pre-1850 New England-New York ancestors. Send SASE to Seattle Genealogical Society at above address for update. This work is now published and available.

\*\*\*\*\*

SOUTHEASTERN COLORADO GENEALOGICAL SOCIETY

P. O. Box 4086, Pueblo, CO 81003

Welcomes new members. Quarterly issued Spring, Summer, Fall, Winter. FREE QUERY per quarterly. Area covered: The original 5 counties of southeastern Colorado: now Baca, Bent, Crowley, Custer, Fremont, Huerfano, Kiowa, Otero, Prowers and Pueblo. MEMBERSHIP DUES: Individual \$7.00, Family \$10.00, Senior Citizen/Student \$5.00 Organization \$15.00 and Life \$100. One publication per membership.

\*\*\*\*\*

ROTA-GENE

INTERNATIONAL GENEALOGICAL MAGAZINE Bi-Monthly

32 Pages FREE QUERIES NEWS BOOK REVIEWS

GENEALOGICAL TIPS HISTORICAL DATA \$15.00/yr.

Sample \$2.50

Charles D. Townsend I.F.R. Genealogy

5721 Antietam Drive Sarasota FLA 34231

\*\*\*\*\*

SANTA BARBARA COUNTY GENEALOGICAL SOCIETY

The first county historical or genealogical society in the United States to become affiliated with the International Federation of Family History Societies; also a member of the American federation. There is a complete file of ANCESTORS WEST, ISSN 0734-4988, in the Library of Congress and in the Allen County Public Library, Fort Wayne, IND. Also from March 1979 at NEW ENGLAND HISTORIC GENEALOGICAL SOCIETY, 101 Newbury St., Boston, Mass. Subscribers include NEW YORK and LOS ANGELES Public Libraries.

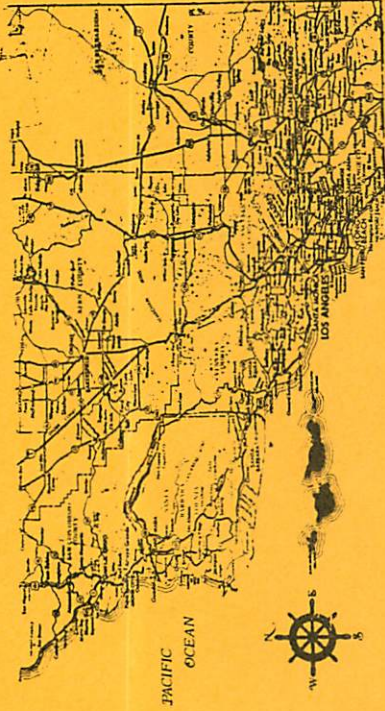
Available - Notesheets, Royal Presidio of Santa Barbara Forms and Charts to assist in research projects.

VOLUNTEER YOUR SERVICES AND MAKE SUGGESTIONS.



One of California's 27 original counties. While the county was actually created in 1850, the history of the area dates back to 1542. In that year Juan Cabrillo discovered the Santa Barbara Channel and later, according to legend crossed to San Miguel Island, where he died and was buried. A second Spanish explorer, Sebastian of the canoe, entered the channel in 1602 and named the area accordingly. Fr. Junipero Serra founded the Santa Barbara mission in 1786. Santa Barbara Presidio, established April 21, 1782, was the last of four royal presidios in Alta California - San Diego, Monterey, San Francisco and Santa Barbara. Santa Barbara had all three Spanish forms - Presidio representing the military; Pueblo, civil and Mission, religious. In 1873 Ventura County was established from the southern portion of the original Santa Barbara area.

NON-PROFIT ORG.  
 U.S. Postage  
 PAID  
 Santa Barbara, CA  
 Permit No. 682



SANTA BARBARA COUNTY GENEALOGICAL SOCIETY  
 P. O. BOX 1303 GOLETA CA 93116-1303  
 Forwarding and  
 Return Postage Guaranteed