

Ancestors West

ISSN 0731-4988

Vol. 12 No. 3

September, 1986

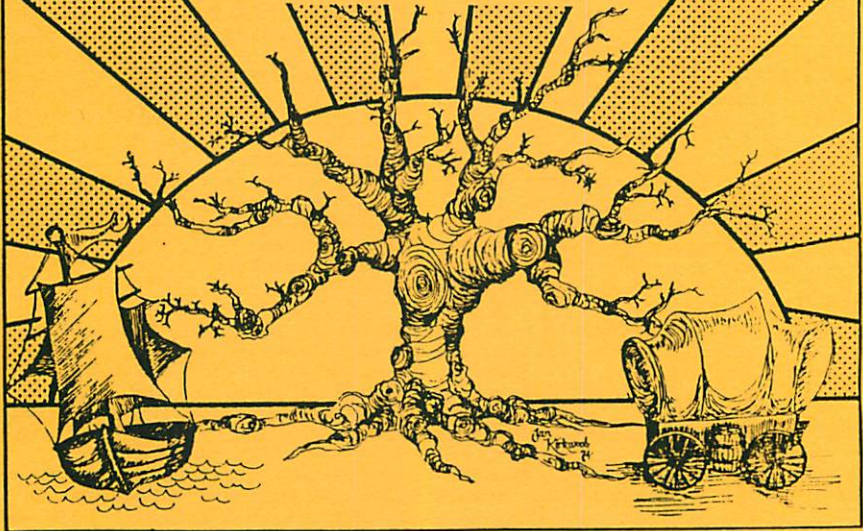
Whole Number 48

S.B.C.G.S.

SANTA BARBARA COUNTY MARRIAGE RECORDS, 1913 cont.
1914, Jan 1 - March 7

FINDING LIST, ANCESTORS CHARTS Nos. 1-53

DATING PHOTOGRAPHS, COSTUMES



“Today weds yesterday
with tomorrow for continuity.”

SANTA BARBARA COUNTY GENEALOGICAL SOCIETY
P. O. Box 1303 Goleta, CA 93116-1303

OFFICERS, DIRECTORS, AND COMMITTEES 1986

Janice Gibson Cloud. President
Barbara Martin. Vice President
Anne Braddock. Secretary
Dorcas Robson. Treasurer
Marjorie Neifstead Corresponding Secretary
Norman Scofield. Director
Robert Tanner Director
Anne Frank. Director
Lillian Mann Fish. Editor, Director
Ruth Brooks Scollin. Librarian, Director
Harold Thelin Parliamentarian
Beatrice McGrath. Newsletter Editor
Marie LaBreche. Asst. Librarian

COMMITTEES

MEMBERSHIP. Merna McClenathen, Fran Steen
FUND RAISING. Gladys Beckwith, Grace Ekvall
BOOK. Emily Thies, Mary L. Johnston
Ruth Norris, Frances Ramsay
LIBRARY. Doris Crawford, Elaine Tuttle
Helen & Morton Noble, Ruth Ruhl
HOSPITALITY Mae Ware, Nancy McNeill
PUBLICITY. Sylvia Byers, Patsy Brock
SALES. Ruth Pelch, Ruth Morrow, Doris Crawford
EDITORIAL. Carol Kosai, Patsy Brock
RESEARCH. Helen Rydell
BUS. Helen Miller, Lorraine Laabs
EDUCATION. Patricia Case
SCRAPBOOK Alice Ovington

PAST PRESIDENTS

Doreen Cook Dullea	1984	Mary Ellen Webster Galbraith	1978
Norman E. Scofield	1983	Carlton M. Smith	1977
Harry W. Titus	1982	Selma Bankhead West	1975-76
Emily Perry Thies	1981	Harry R. Glen	1974-75
Bette Root	1980	Carol Forbes Roth	1972-73
Harry E. Titus	1979		

ANCESTORS WEST is published quarterly in March, June, September and December. Single copies of current and back issues \$2.00, depending on availability. Contributions of a genealogical or historical nature will be accepted as space allows. Queries are encouraged. The Society assumes no responsibility for services or work undertaken by advertisers.

MEMBERSHIP: Santa Barbara County Genealogical Society dues \$15.00 for calendar year, payable January 1 include a subscription to the quarterly, ANCESTORS WEST. Family memberships \$20.00 per year include one joint subscription to the quarterly.

REGULAR MEETINGS: Second Saturday of each month, 10 a.m., place to be announced, pending relocation. Library open Thursdays, 12 noon to 4 p.m., Room 8, Goleta Community Center, 5689 Hollister Ave., Goleta, CA.

ANCESTORS WEST

Vol 12, No. 3

TABLE OF CONTENTS

September, 1986

	Page
FROM THE PRESIDENT, Jan Cloud	88
MEMBER PROFILES, with Family Research Interests, Carol Kosai	
Mary Leigh (Henderson) Johnston, Instructor	89
Ruth Edmston Pelch - in charge of Sales	89
Frances Yeager Ramsay	89-90
Ruth Evans Norris	90
Helen and Norton Noble	90
THIRD GENEALOGY FAIR October 18, 1986, Santa Barbara	91
FEDERATION OF GENEALOGICAL SOCIETIES, Projects, Gift Fund	92
HUGUENOT AND WALLOON GAZETTE - announcement	92
EARLY "FREEMEN" IN NEW ENGLAND courtesy of Emily Thies	93
HOW TO DATE AN OLD PHOTOGRAPH, Judith Allison Walters originally appearing in the Seattle Gen. Soc. Bulletin, 1983	94
IDENTIFYING THE PERIOD BY COSTUMES IN PHOTOGRAPHS	95
ANCESTORS TABLES Chart 51, Kenneth Kosai	96
Japanese Genealogy Notes, Carol Fuller Kosai	97
Chart 52, Grace (Downie) Edvall	98-99
COLLAPSED PEDIGREE - BANCKER, Beatrice Mohr McGrath	100-101
MY GET UP AND GO HAS GOT UP AND WENT? Abbie Mann Reed?	101
ANCESTOR TABLE, Chart 53, Anna Braddock	102
WELLS-MADDEN (MADDIN?) Names Sought	117
QUERIES	103-106
ANCESTORS TABLES, Listed Charts 39-53 (Charts 1-38 are listed in Vol. 9, No. 3, p.87, Sept. 1983)	106
CONTRIBUTIONS BY MEMBERS OLDER IN AGE, suggestions	106
GLEANINGS-Newsletter No. 50, HAWAIIAN HISTORICAL SOCIETY	107
SCOTS IN HAWAII - ORAL HISTORY PROGRAM, LIBRARY PROJECT and Clipping contributed by SBOGS Member Carolyn Crawford	
NEW IN THE LIBRARY, prepared by Librarian, Ruth Scollin	108
Books 34, Family History Periodicals 6, New Exchange:	
Aberdeen & North-East Scotland Fam. Hist. Soc. Dec. 1985	109
Exchanges and Quarterly Donations Sample Copies Rec'd.	109-112
GLEANINGS, Signers of Declaration of Independence - Hardships	113
PENMANSHIP OF EARLY CENSUS ENUMERATORS-Deciphering	113
BOOK REVIEWS	114
GENEALOGICAL COLUMN CLIPPINGS-OUR KINGSTON FAMILIES	114 - 117
SANTA BARBARA COUNTY MARRIAGE RECORDS, 1913, con.	118-120
Tabulation of Records appearing in ANCESTORS WEST	121-122
Santa Barbara County Marriage Records, 1914, Jan 1-Mar 7	
Request for Comments on Format, etc.	124-126

Contributions of books, pamphlets, periodicals for SBOGS Library will be reported in NEW IN THE LIBRARY section and are tax deductible. Recommendations for purchase of books to be made to Book Committee. Contribute to the HALF AND HALF BOOK BUY PROGRAM. Articles and Ancestral Charts for ANCESTORS WEST are needed. QUERIES bring response and expansion of family data. VOLUNTEER YOUR SERVICES. MAKE SUGGESTIONS.

FROM THE PRESIDENT

Society work has been going steadily on during the summer. Our incorporation application has been filed with the state agency, and after making some minor rewording changes they requested, we are awaiting their response.

In accordance with our new By-laws, election of society officers will now be held in November (rather than in December). This allows for the filling of appointed positions and committees at a more reasonable time of year (rather than during the Xmas holidays). As before, the incoming Board takes office at the end of the December business meeting. This procedure will provide more time for planning and a prompt start in January.

If approached to serve in some capacity next year, please do! It's really rewarding to have a hand in directing and shaping the activities of our society. New ideas are needed and welcomed! As our society grows, there are more possibilities for expansion of activity and more people needed to implement new ideas. We've been growing at such a pace that it's not always easy to know who the willing workers are. When the nominating committee is announced, won't you please let them know that you'd be willing to help in some capacity. They propose a slate for only the six elected offices, but it will be very helpful if the president-elect can be provided with a list of those willing to help in the many other positions needed to run our society. WE NEED YOU!

We're looking forward to a great Fall! Bus trips resume, Barbara Martin has a line-up of interesting programs for the regular meetings and our 3rd Genealogy Faire, scheduled for October 18, is a much anticipated event. (Remember, this is when you get to research in books from our members private collections. It's a not-to-be-missed opportunity!)

So, get out your charts. Sharpen you pencils. Lay in your bags of photocopy change. Replenish your supply of postage stamps - and we'll see you in September!

Jan Clark

P.S. At this time last year, our membership numbered 178. Current total is 230 - an increase of 52 members. We are definitely growing!

MEMBER PROFILES

MARY LEIGH JOHNSTON was born MARY LEIGH HENDERSON at Cottage Hospital in Santa Barbara. She grew up in Ventura County. She has an AB degree from Stanford in biology and a Master's Degree from Immaculate Heart College in Library Science. She has a teaching credential and uses that expertise at the local library where she teaches genealogy.

Mary Leigh is the mother of five; four sons and one daughter. She lived in Montana, returning to Ventura County in 1962 and Santa Barbara in 1978.

Her interest in genealogy started about 1972. Her Grandmother and Great Aunt were DAR members, a fact that might be lost with their deaths. An Aunt was a great help to Mary Leigh. She kept digging things out to see what Mary could make of them.

A few of the families of interest are:

HENDERSON - Jefferson Co., Ohio - 1803

ARMSTRONG - co. Cavan, Ireland - 1810

BERGER - Pittsylvania Co., Virginia - 1837

RUTH EDMISTON PELCH is the very capable person in charge of sales. She was born near Bakersfield, and lived in Whittier and Ventura, where she attended Jr. College. She won an art scholarship and moved to Oakland to take advantage of it. During the Depression there were no jobs in commercial art, so she went to work as a bookkeeper-secretary. She met her husband, Otto, after World War II, through his sister. He was a native Santa Barbaran, being part of Peich and Son, at State and Anapamu.

Her sister in Ventura got her started on genealogy. Ruth worked on the maternal side of the family, while her sister did the paternal. Ruth Amanda now knows that Amanda was a name used in her family for five generations, from her great-grandmother to her daughter.

Areas of research include:

FULLINGTON/FULLERTON - Warren Co., Ohio - 1813

YOUNG - Warren Co., Ohio - 1813

HENDRICKS - Warren Co., Illinois - 1850

FRANCES YEAGER RAMSAY was born in Anderson Co., Kentucky on her grandfather's farm. Her husband, Jack, was born in Scotland. They met and married in Michigan and had four children. One daughter lived in Santa Barbara and retirement, in 1979, brought them here permanently.

Five years ago a researcher for an estate settlement appeared at her door with vital statistics for her and her cousins. This was exciting!

Continued on Next Page

MEMBER PROFILES

FRANCES RAMSAY Continued

When she saw a genealogy class was being given, she joined it and has been busy on genealogy ever since. Besides, her daughter kept asking her questions! Frances is off to Scotland this month, with the results of her Spring Salt Lake trip in hand.

Family names that keep her busy include:

YAEGER - Fayette Co., Kentucky - 1795

TOLL - Adams Co., Ohio - 1790's

RAMSAY - Peebleshire, Scotland - early 1800's

WARBURTON - Edinburgh, Scotland - early 1800's

RUTH EVANS NORRIS was born on a small ranch near Exeter, California. In 1922 the family left the ranch because of her father's health. She was accepted at UC Berkeley and attended one year. Scarce funds led to her job in the laboratory of a chemical company.

A few years later, a steel company began sending a young man to the lab to pick up the samples of river water they tested. Her cousin asked that man to take her over to see Ruth. Ruth and that man have just celebrated their 50th wedding anniversary at a large family party in Oregon!

A letter addressed to her grandfather, long after his death, was the start of Ruth's genealogical search.

Some of her areas of work:

EMORY - St. James, Missouri - 1881

EVANS - Contra Costa Co., California - 1878

EVANS - Tulare Co., California - 1910

HELEN and MORTON NOBLE will be opening and closing the library for us. Helen was born near Detroit, while Morton was born in Detroit.

Helen is from an artistic family, which has led to her work with print making. Persistent encouragement from her husband brought her to genealogy work.

Morton's interest started in the 1930's when his father and two aunts started work on an eight generation fan chart. Since retirement, Morton has been busy taking up where his father left off. He is a direct descendant of Thomas Noble. Gledhill Library has a book about Thomas. Morton is a family name from his mother's side.

Changing names for Helen include:

COLBORNE - London, England - 1635

COLBURN - Ipswich, Massachusetts - 1654

COBURN - Chelmsford, Massachusetts - 1696

Names Morton has worked with include:

MORTON - Hatfield, Massachusetts - 1676

NOBLE - Springfield, Massachusetts - 1662

BUKLELEY - Co. Bedford, England - 1583

3RD GENEALOGY FAIR

October 18, 1986

Research - Speaker - Beginner Class - Sales

Mark Saturday, October 18 on your calendar!! Instead of the regular October meeting, our Santa Barbara County Genealogy Society is planning its 3rd GENEALOGY FAIR for this date. It will be held at the United Methodist Church, Anapamu and Garden Streets from 10 am to 4 pm.

Come prepared to do research! We will have tables arranged by geographical area and staffed by people familiar with each area. Many members are loaning books from their personal libraries to be available to you for your research. These will be complemented by other books selected from our substantial Society Library. (It's an excellent opportunity for you to use materials not generally available!) Representatives of patriotic societies have been invited to staff a table. We are endeavoring to have someone to demonstrate genealogical computer software.

Bette Root, former president of our Society, is to be the featured speaker. She is presently the librarian of the California State Genealogical Society and the northern California representative for the California State Genealogical Alliance. Her topic will be "Ten Major Genealogical Indexes." And, for those new to this sport, there will be a short Beginner Class.

Another feature for your pleasure will be our Sales Table. It will have books, supplies and genealogy-related materials available for purchase (with discounts given to Society members). In addition, there will be some items of genealogical interest that can only be acquired by participating in the Silent Auction.

For those of you who believe food is still a necessity (even with all the books inviting your perusal), plan on bringing a sack lunch or eating at one of the nearby establishments. We will have coffee, tea and "goodies" for sale.

Proceeds from this event will benefit our Society in many ways - additions to our library, special speakers, general operating expenses, and the like.

Offers of assistance or questions should be directed to the General Chairman for this affair, Jerry Shepherd (963-5034 evenings and weekends).

This is an opportunity not to be missed -- a chance to do research, to work with others having like interests and to get to know your fellow Society members. We look forward to having you join us.

FEDERATION OF GENEALOGICAL SOCIETIES
P. O. Box 220
DAVENPORT, IOWA 52805

Rabbi Malcolm H. Stern, NARA GIFT FUND NATIONAL CHAIRPERSON urges our members to contribute \$1.00 each to the National Archives Gift Fund and send the donation to the above address. Make payments to FEDERATION OF GENEALOGICAL SOCIETIES. THE MORE FUNDS WE HAVE, THE MORE AND BETTER FINDING AIDS WE CAN PRODUCE.

PROJECT #1: STREET INDEX TO MAJOR CITIES IN 1910 CENSUS This project was chosen first for several reasons: 1) Our fund was very small at the time we approached NARA (National Archives or its Branches) for an idea and this microfiching was done - with copies to all NARA branches - for \$600. 2) 1910 Census touches more American families than any other available to genealogists. 3) The Street Index is much easier to use for the cities it covers than the micro-filmed enumeration districts for 1910. Anyone with an address derived from a 1910 city directory can quickly locate the census enumeration district.

PROJECT #2: The Genealogical Coordinating Committee, after some deliberation, approved a suggestion that our increased funds (now over \$15,000) could be devoted to obtaining for the NARA branches copies of the Index to Ships' Passenger Lists, beginning with the port of New York as America's major port of entry. This suggestion was submitted to NARA staff, who reported that they were attempting to improve the quality of the many illegible index cards on the microfilm. NARA reported that they are still exploring this possibility, but the project we proposed would far exceed our funds. Even for NARA's own microfilming the cost is now \$13 per reel. They then made counter-suggestions one being the reproduction of copies of the microfilms recently discovered acquired by NARA of the immigration and naturalization records for the ports of San Francisco (470 reels) and Galveston (50) reels. The Genealogical Coordinating Committee agreed to this project which is currently being undertaken.

WHAT SHALL BE OUR NEXT PROJECT? Suggested by Shirley Barnes of Wayland, MA: Reproducing for NARA Branches the Index to Compiled Service Records of Volunteer Soldiers who served during the War of 1812 (234 reels), plus the full service record. Among other suggestions: Reproducing the Civil War Naval Widows' pension records. The Mormon Library is beginning to microfilm at Bayonne, NJ, the indexes to immigration records. Possibly securing microfiche copies.

These and any other suggestions will be discussed by the Genealogical Coordinating Committee at one of their scheduled meetings. Any comments or suggestions should be sent as soon as possible to

Rabbi Malcolm H. Stern
NARA GIFT FUND NATIONAL CHAIRPERSON

300 East 71st St., #5-R New York, NY 10021.

LETS ALL SEND A CONTRIBUTION TO THIS MOST WORTHY UNDERTAKING.

HUGUENOT & WALLOON GAZETTE, founded October 1985 All communications to The Hon. Editor 'Malmaison' Church Street Great Bedwyn, Wilts SN8 3PE Hoped to have April and October mailings USA \$10.00 in dollar bills please. Rates cover airmail postage. Information sheet to enable researchers to exchange information, facts and pedigrees about their presumed Huguenot, Walloon or Flemish descent. Primarily intended for those who

- are not sure if they are of Huguenot, Walloon or Flemish descent;
- have been told they are of such descent but lack proof;
- have proof that they are of Huguenot, Walloon or Flemish origin but cannot jump the gap between the 19th and 18th centuries;
- have come across a foreign-looking name in their English pedigree and wonder if it might prove to be Huguenot, Walloon or Flemish.

EARLY 'FREEMEN' IN NEW ENGLAND

An Early Call for Help from the NEHG REGISTER for help in this CORNER STONE of New England History, Jan. 1849, pp. 41-45

Emily Thiess has called attention to the above captioned article, discussing the meaning of FREEMEN, the period of its existence and a list of those admitted in 1677 by the General Court sitting at Boston, from Boston, Braintree, Concord, Dorchester, Dedham, Charlestown, Newbury, Salem, Reading, Hingham, Medfield, Springfield, Waymouth. About 50 names are listed. The practice continued from 1630, when the first General Court was held until "the dissolution of the government, it being repealed, in appearance only, after the restoration of King Charles the Second." 109 were admitted at the first Court in 1630. From 1630 to 1648 1809 freemen were recorded. The intent of the REGISTER was that the most perfect list of FREEMEN possible be obtained to occupy a prominent place in the pages of the REGISTER.

Before a member of society could exercise the right of suffrage, or hold any public office, he must be made a freeman by the general or quarterly court. To become such he was required to produce evidence that he was a respectable member of some Congregational church. In 1664 by Royal order, this regulation was modified to allow individuals to be made freemen who could obtain certification of their being correct in doctrine and conduct from clergymen acquainted with them.

The first General Court in Massachusetts was held on October 19, 1630, not by representatives, but by every one that was free, of the corporation, in person. None had been admitted as freemen since they left England. It was ordered that for the future the freemen should choose the assistants, and the assistants from among themselves choose the governor and deputy governor. The court of assistants were to have the power of making laws and appointing officers. This was a departure from their charter. Among the 109 freemen admitted at this Court were MAVERICK, BLACKSTONE and many more who were not of any of the churches. The next General Court was the court of election for 1631.

The "FREEMAN'S OATH" was the first paper printed in New England. It was printed at Cambridge, by STEPHEN DAYE, in 1639, upon a single sheet, in the manner of a handbill, and without date. It was in these words, as established in 1634: -

" I, (S. B.) being by Gods providence, an Inhabitant, and Freeman, within the Jurisdiction of this Commonwealth; do freely acknowledge my self to be subject to the Government thereof; And therefore do here swear by the great and dreadful Name of the Everlasting God, that I will be true and faithful to the same, and will accordingly yield assistance & support thereunto, with my person and estate, as in equity I am bound; and will also truly endeavor to maintain and preserve all the liberties and privileges thereof, submitting my self to the wholesome Lawes & Orders made and established by the same. And further, that I will not plot or practice any evil against it, or consent to any that shall so do; but will timely discover and reveal the same to lawfull Authority now here established, for the speedy preventing thereof.

" Moreover, I doe solemnly bind my self in doe the sight of God, that when I shall be called to give my voyce touching any such matter of this State, in which Freemen are to deal, I will give my vote and suffrage as I shall judg- in mine own conscience may best conduce and tend to the public weal of the body. So help me God in the Lord Jesus Christ."

HOW TO DATE AN OLD PHOTOGRAPH
 (by Judith Allison Walters
 in the Seattle Gen. Soc. Bulletin, 1983)

1. Daguerreotype, 1839-1860

The oldest of the commercially made photographs; has a shiny, mirror-like appearance. Sometimes appears positive, sometimes negative, depending on the angle by which it is held and viewed. Has a fragile silver surface on a copper plate. Originally enclosed in a case, and still needs that protection.

2. Ambrotype, 1854-1863

A negative image on glass, will appear positive because it will have coating of red or black lacquer applied to the back, or enclosed in a case with black paper or cloth behind it. Hold up to light to make sure. Cannot be distinguished from tintypes unless examined carefully.

3. Tintype or Ferrotype 1856-1915

Can range in size from 3/4 inch to 8 x 10 or larger. Not shiny, not on glass, but an image on thin metal. If in cases or pasted in paper frames, they are probably earlier. . .if slipped into a paper frame, they are likely to be later. Early poses were formal; casual poses or of a group were later. Tintypes were taken in great numbers at fairs and amusement parks. Look on back for signs of paste or paper, or study the clothing fashion for the approximate date.

4. Cartes de Viste, 1860-1910

2 1/2 x 4 1/2, first of the paper photographs; can be found in albums, with or without tintypes and cabinet photographs. The thinnest are the earliest, and the heavier and/or thicker, later. If shiny, they fall into the latter part of the period. Discontinued around 1890 in the U.S., but made later in the British Isles and Scandinavia.

5. The Cabinet photograph, 1875-1910

4 1/2 x 6 1/2, found in albums, wall or cabinet frames. Study the fashions. If the photo is oval, pasted on the card, or if the photo is surrounded by dark or black mount card, it is probably after 1900.

6. The Post Card photo, 1905-1930

Found in great profusion, sometimes mailed.

If a Revenue Stamp is found on the back of the tintype or carte de visite it means the picture was taken at the time of the Civil War, when photographs were taxed.

IDENTIFYING TIME PERIOD BY COSTUMES IN PHOTOGRAPHS

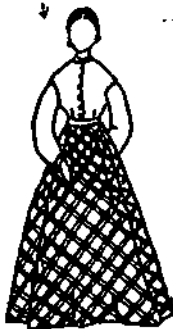
From the WASHINGTON STATE GENEALOGICAL & HISTORICAL REVIEW, Vol 1, No. 4:
 Following are guidelines which can often be used in identifying the time period of a photograph of a woman, based on the styles at the time.

Use the following code:

1. Hair style
2. Collar
3. Shoulder-line
4. Sleeves
5. Waist-line
6. Skirt
7. Other details

1861 - 1870

- 1 Plain, Center Part
- 2 Small
- 3 Low
- 4 Curved
- 5 High, Round
- 6 A-Shape, Flat
- 7 Plain Fabric Very Common



1848 - 1853

- 1 Center Part
- 2 No Collar
- 3 Very Low
- 4 Very Tight
- 5 Low, Pointed
- 6 Soft, Full
- 7 Generally Not Common



1854 - 1860

- 1 Center Part
- 2 Small
- 3 Very Low
- 4 Wide
- 5 Round
- 6 Very Full
- 7 Front Waist Buttoned, Over Hoops

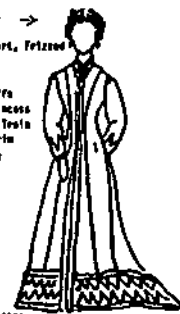
1871 - 1879

- 1 Fancy, High
- 2 Added Trim
- 3 Somewhat Low
- 4 Large Collars
- 5 High, Jacket
- 6 Bunched Collars
- 7 Much Jewelry, Elaborate Dress



1877 - 1881

- 1 Center Part, Frizzed
- 2 Low
- 3 Round
- 4 Large Collars
- 5 Long Princess
- 6 A-Shape; Train
- 7 Fabric Trim Often Big



1882 - 1890

- 1 Plain With Bangs
- 2 Medium
- 3 Very High
- 4 Very Tight, Short
- 5 Pointed, Jacket
- 6 Draped, Bustle
- 7 Two Fabrics Often Used, Often No Skirt Pleated



1891 - 1910

- 1 Plain Or Frizzed
- 2 Medium High
- 3 Very High
- 4 "Kick-ups"
- 5 Jacket-style
- 6 Plain, Round
- 7 Generally Simple Overall



1896 - 1900

- 1 Simple, Frizzed
- 2 High
- 3 High, Wide
- 4 Very Full At Top
- 5 Round, Tight
- 6 Plain, A-Shape
- 7 Tailored Style, Suburbanite Com In

Suburbanite Com In

ANCESTORS TABLE - Chart 51

Kenneth Kosai Prepared by his wife, Carol Marie Fuller
 234 Old Ranch Road Kosai COMMSOFT ROOTS II AHNENTAFEL CHART
 Goleta, CA 93117

-I

1. Kenneth KOSAI, occ. scientist b. 27 Jul 1944 Spokane Co., Spokane, WA, res. in Goleta, CA m.14 Sep 1962 Coeur d'Alene, Idaho

-II

2. Kiso KOSAI, occ. Frk-Lft-Operator, b 10 Oct 1917, King Co., Auburn WA. m. 21 Jan 1944 Missoula, Montana
3. Mary MUKAI, occ. Tailor, b 14 Mar 1920, Kitsap Co., Kingston, WA res. in Auburn, WA

-III

4. Kiichiro KOSAI, occ. Farmer, b 18 Aug 1888 in Shiga Ken, Japan d 6 Apr 1945 in Minidoka, ID. bu. Seattle WA m. 9 Sep 1912 in Shigo Ken, Japan. ref: KOSA1888 (d. in Project Hospital)
5. Sumi TERAMURA, b. 10 Mar 1890 in Hikone, Japan, d. 22 Apr 1937 in King Co., Auburn, WA. ref: TERA1890
6. Otosuke MUKAI, occ. Farmer, b. 20 Jul 1880 in Taji, Wakayama, Japan d. 11 Apr 1972 in Spokane Co., Spokane, WA, bu. 15 Apr 1972 in Spokane Memorial Gardens, im. in Tacoma WA. m. 4 Jun 1910 in Seattle, WA, ref: MUKA1880
7. Sawano ANDA, occ. Housewife, b. 20 Sep 1892 in (See Anda File.) Wakayama, Japan, res. in Spokane, WA. im. in "Minnesota". Smith's Cove WA, ref: ANDA 1892

-IV

8. Shinya KOSAI, b 4 Jul 1862 in Shiga Ken, Japan d. 7 Jul 1919 in King Co., Auburn, WA. ref: KOSA1862 buried Japan.
9. Suma YASUDA, b 19 Feb 1862 in Shiga Ken, Japan, d 17 Jan 1939 in Auburn, WA buried in Japan.
10. Otojiro TERAMURA, b 4 May 1858 in Hikone, Japan, m. before 1883
11. Yasu NATSUHARA, b 17 Mar 1866 in Kyutoku, Japan. d 17 Apr 1913
12. Tomekichi MUKAI, occ. Shipbuilder, b in Taji, Wakayama, Japan, bu. in Taiji, Wakayama, Japan
13. Shizu MUKAI, b in Taiji, Wakayama, Japan. bu. in Taiji, Wakayama, Japan
14. Jisaku ANDA, b in Higash Muro, Wakayama, Japan, bu. in Higash Muro, Wakayama, Japan, ref: ANDA
15. Koishi (Ishii) ANDA b in Higash, Wakayama, Japan

-V

16. Kiroku KOZAI, b in Shiga Ken, Japan, d. before 1872
17. Tuye KOZAI, b. in Japan
18. Hikoji YASUDA, b. 12 Jan 1827 in Shiga Ken, Japan, ref: YASU1827
19. Chie TANEMURA, b 10 Jan 1835
22. Jinzo NATSUHARA, b in Kyutoku, Japan
23. Tetsu TSUCHIDA
24. Kahichi MUKAI

-VI

36. Hikoza YASUDA
46. Tagocho TSUCHIDA, b in Japan

Ed. Note: The Sources, ISBN 0-916489-00-0, p.600 lists 3 types of sources: Household Registers (Koseki) available only to close descendants of the head of the house Buddhist Death Records (Kakocho) kept in Buddhist Temples Buddhist Mortuary Tablets (Ihai) made of wood, lacquered in black and inscribed in gold leaf, most often found in the family but Sudan (household shrine).

JAPANESE GENEALOGY NOTES

Carol Fuller Kosai

Finding Your Roots, Jeane Eddy Westlin, pub. J.P.Tarcher, Inc., Los Angeles, dist. by St. Martin's Press, N.Y., 1977

p.35, Japanese

Until 1890, the Emperor of Japan refused to allow emigration, and those who did emigrate to America were not allowed to return to their homeland. After the edict was rescinded, over 100,000 Japanese quickly boarded ships to escape poverty, ruling class oppressions, and military conscription. Most settled in Hawaii and on the West Coast and became small farmers, cannery workers, and the like. Although 400,000 Japanese immigrants have come to the United States since 1861, there are today only 600,000 Americans of Japanese ancestry.

The Genealogist's Encyclopedia, L. G. Pine, Collier Books, N.Y., 1969, p. 172:

All notifications are entered in the family register of the relevant person by the mayor of the city or head man of the ward, town, or village in charge of family registration. Where a notification has been made to an office other than that of the registered locality it is transmitted to the office of the registered locality for entry in the family register. When entered, the notification is sent to the Legal Affairs Bureau or its branch and kept on file for twenty-seven years, being open to public inspection. Where an entry or record is struck off the family register because of the death of all the persons concerned, it is then transferred to another file (called 'the file of struck-off registers') and kept for fifty years. Thus, the period for which a family register is preserved is from the time it is prepared to the time it is struck off, plus the fifty years for which it will continue to be preserved.

NAME KOSAI/KOZAI Name Kosai appears to be an error by the immigration officials when the family arrived in 1905. Those who went to Canada remain KOZAI. The name is a rare one even in Japan and is probably derived from a place name. Much of the information was developed and provided by Dr. Michael A. Cunningham on a 1978/79 visit to Japan. He visited Ben Kozai in Shiga-ken, Japan, who was then living on the property purchased by Kiichiro Kosai for his mother, (#9 Suma Yasuda). The oldest records found were wooden tablets in the Yasuda house. (The Sources, p.60) Ihai in family butsudai. The compiler has a five-page translation of the original Household Register #93 and a copy made 9 June 1978 and certified by the mayor of Shingaken. This is no different from the original except that the original has some names deleted when the individual died or married into another family. There also are notes as to #9 Household, Teramura confirming the photo marriage 9 Sept 1912 of Kiichiro Kosai and Une Teramura, the separation or annulment 21 April 1913 and the marriage 21 May 1913 of Kiichiro and Sumi, her elder sister, b. 10 March 1890. Many records were transmitted from the United States to Japan of births and deaths via the Japanese Consulate in Seattle, WA. The tale of another photo bride (#7, Sawano Ando, who married #6 Ootosuke Muki) is found in Issai: A History of Japanese Immigrants in North America, by Kazuo Ito, translated and published 1983, Seattle, at page 252

ANCESTOR TABLE

Chart 52

Grace (Downie) Ekvall
3775 Modoc Road, #119, Santa Barbara, CA 93105

	<u>Born</u>		<u>Died</u>	
--I				
1. Grace Elizabeth DOWNIE	1909	WA		
--II				
2. Ralph Ernest DOWNIE	1876	KS	1961	WA
3. Josephine Mae DUNBAR	1882	MI	1964	WA
--III				
4. Henry DOWNIE I	1834	Irl	1914	WA
5. Elisabeth KERR	1836	PA	1917	WA
6. William Henry DUNBAR	1858	MI	1943	WA
7. Catherine Eleanor DOUST	1858	MI	1948	WA
--IV				
8. John DOWNIE I	1804	Irl	1890	KS
9. Mary NIBLOCK I	1805	Irl	1869	KS
10. George KERR I	1805	Irl	1878	PA
11. Mary MARSHALL I	1809	Irl?	1869	PA
12. Charles Smith DUNBAR	1831	NY	1909	WA
13. Orpah Saviah NORTON	1832	NY	1918	WA
14. William DOUST I	1828	Kent-Eng	1885	MI
15. Esther MOORE I	1828	Kent-Eng	1897	MI
--V				
24. Cyrus DUNBAR	1798	MA	1856	MI
25. Mary STARK			1849	NY
26. Hiram NORTON	1810			
27. Emily Jane GROVENBURG				
--VI				
48. Eliab DUNBAR	1771	MA	1844	MA
40. Lavina HAYFORD				
52. Samuel NORTON	1785			
53. Orpah				
--VII				
96. Jesse DUNBAR	1742	MA	1816	MA
97. Azubah CONANT	1739	MA		
--VIII				
192. James DUNBAR	1694	MA		
193. Experience HAYWARD	1701	MA	1776	MA
194. Jeremiah CONANT	1720	MA		
195. Martha PACKARD	1720	MA		
--IX				
284. Peter DUNBAR	1668	MA	1719	MA
285. Sarah THAXTER	1668	MA	+1728	
286. Samuel HAYWARD				
287. Elisabeth				
288. Nathaniel CONANT	1679		1745	MA
289. Elisabeth HAINS (Hinds)				
290. Daniel PACKARD			1732	MA
291. Mary HARRIS	1690		1727	

ANCESTOR TABLE - Chart 52

Grace Downie Ekvall

	<u>Born</u>	<u>Died</u>
--X		
768. Robert DUNBAR	1630-34 Sctld	1693 MA
769. Rose		1700
770. Samuel THAXTER	1641 MA	1725 MA
771. Abigail CHURCH	1647 MA	1677 MA
772. Nathaniel HAYWARD	@1640 MA	
773. Hannah WILLIS		
776. Nathaniel CONANT	1650 MA	
777. Hannah MANSFIELD	@1656 MA	
780. Samuel PACKARD	1646 MA	@1698
781. Elizabeth LATHROP (Lothrop)		
782. Isaac HARRIS		1708
783. Mercy LATHAM	1650	1680
--XI		
1540. Thomas THAXTER I	1590 Eng	1653 MA
1541. Elizabeth (COFFIN?)		1660 MA
1542. Richard CHURCH I	1608 Eng	1668 MA
1543. Elizabeth WARREN I	?1616 Eng	1670 MA
1544. Thomas HAYWARD I	Eng	1681 MA
1545. Susannah (TOWNE?)		1678
1546. John WILLIS (Deacon) I	Eng?	1693 MA
1547. Elizabeth HODGKINS		
1552. Lot CONANT	@1623 MA	1674 MA
1553. Elizabeth WALTON I	bp 1629 Eng	
1554. Andrew MANSFIELD	1623 MA	
1555. Bethiah (Bithia)		
1560. Samuel PACKARD I	Eng	1684 MA
1561. Elizabeth I		?1716 MA
1562. Mark LOTHROP I	bp 1597 Eng	1685 MA
1563. Jane		
1564. Arthur HARRIS I	1602 Eng	1674 MA
1565. Martha LAKE		
1566. Robert LATHAM	@1623	1688 MA
1567. Susannah WINSLOW	1628 MA	-1683 MA
--XII		
3086. Richard WARREN I	Eng ?	1628 MA
3087. Elizabeth I	Eng ?	1673 MA
3104. Roger CONANT I	1592 Eng	1679 MA
3105. Sarah HORTON I	Eng	-1667 MA
3106. William WALTON (Rev.) I	1598 Eng	1668 MA
3107. Elizabeth COOKE I	1610 Eng	1682 MA
3108. Robert MANSFIELD I	Eng	1666 MA
3109. Elizabeth I		1673 MA
3134. John WINSLOW I	1597 Eng	1674 MA
3135. Mary CHILTON I	bp 1607 Eng	1679 MA
--XIII		
6270. James CHILTON I	@1563 Eng	1620 MA
6271. Susanna FURNER I	Eng	1620/21 MA

Note: A great deal of the information in Chart 52 was collected through the efforts of my brother, Dr. Willard A. Downie, of Redlands, CA. - G. E.

COLLAPSING PEDIGREE#3584 GERRIT BANCKER
F OF B D 1691#1792 EVERT BANCKER
F OF B 1665 D 1734#3585 ELIZABETH DIRKSE VAN EPS
M OF B 1623 D 1688#896 CHRISTOPHER BANCKER
F OF B 1695 D 1734#1793 ELIZABETH ABEEL
M OF B 1671 D 1734#448 EVERT BANCKER
F OF B 1721 D 1803

F OF B D

#897 ELIZABETH HOOGLANDT
M OF B 1644 D 1751

M OF B D

ANCESTORS OF

#224 CHRISTOPHER BANCKER
B 1751 D 1803
m. #225 Maria SMITH 1751-1804

F OF B D

#898 ABRAHAM BOELEN
F OF B 1690 D 1741

M OF B D

#449 ELIZABETH BOELEN
M OF B 1728 D 1789

F OF B D

#1798 JOHANNES DE PEYSTER
F OF B D#899 ELIZABETH DE PEYSTER
M OF B 1692 D#1799 ANIA BANCKER
M OF B 1670 D#3598 GERRIT BANCKER
F OF B D 1691
see #3584 above & #7168
for earlier generations#3599 ELIZABETH DIRKSE VAN EPS
M OF B 1623 D 1683
see #3585 aboveP
A
T
E
R
N
A
LM
A
T
E
R
N
A
L

COLLAPSING PEDIGREE

Bea McGrath (Beatrice Mohr McGrath, 4746 Amarosa St., Santa Barbara, CA 93110) submitted the Bancker collapsing Pedigree chart, with the name of data re #225 Maria SMITH 1751-1804 at the bottom left hand corner and without the numbers or notations for #3598 and #3599, the ancestors who are the same as #3584 and 3585. Those details were added by the Editor as indicating the manner in which she makes up such charts.

Bea asks how other members indicate on a pedigree chart ancestors who appear in more than one line, and submitted the preceding chart to illustrate the problem.

Before the formation of SBOGS the editor and a close friend were members of Southern California Genealogical Society, then headquartered in Long Beach, California, and members of a support group in Ventura meeting monthly in Ventura. Among the members of that group were Foster and Winnie (Fuller) Gilbody, now living in Half Moon Bay, CA, and Tom Collins, who later moved to Alexandria or Falls Church, VA and became very active in the National Genealogical Society in Washington, D.C. Your Editor and Tom Collins cooperated in the production of a Six Generation Pedigree Chart, an example of which was cut down to illustrate the problem in this issue.

The theory was to use a new sheet for the first female of each surname and file the sheets by the family surnames alphabetically or to file in sequence according to the numbers. Also to make out family group sheets for each generation. Also to make references and data notes on the reverse side of the pedigree chart.

Bea will welcome suggestions from other members.

MY GET UP AND GO HAS GOT UP AND WENT

How do I know my youth is all spent?
Well, my get up and go has got up and went.
But in spite of it all I'm able to grin
When I think of the places my get has been.

Old age is golden, I've heard it said
But sometimes I wonder when I get into bed
With my ears in a drawer, my teeth in a cop,
My eyes on the table until I wake up.
Ere sleep dims my eyes I say to myself
Is there anything else I should lay on the shelf?
And I'm happy to say as I close my door
My friends are the same or perhaps even more so.

When I was young my slippers were red
I could kick up my heels right over my head.
When I grew old my slippers were blue
But still I could dance the whole night through.
Now that I'm old my slippers are black,
I walk to the store and puff my way back.
The reason I know that my youth is all spent
My get up and go has got up and went.

Buy I really don't mind when I think with a grin
Of all the places my get up has been.
Since I've retired from life's competition
I busy myself with complete repetition.
I get up each morning, dust off my wits,
Pick up my papers and read the bits,
If my name is still missing, I know I'm not dead, so
I eat a good breakfast and go back to bed.

Can anyone refute the fact that this ditty was written by the Editor's sister, Abbie Sophie Mann Reed (Mrs. Albert L.) late of Unity, N.H.?

It was received many years ago with the information it came from the sister's pen.

However, when shown to a SBOGS member, the remark was: "I have seen that before. My father showed it to me years ago."

LAF

ANCESTOR TABLE - Chart 53

Anne Braddock

P. O. Box 30962

Santa Barbara, CA 93130

(805) 687-4228

Gen.

	1.	E. Anne Braddock		
II	2.	Roy L. Braddock	1912 - VA	Living in NC
	3.	B. Elizabeth Powell	1909 - VA	Living in NC
III	4.	Harney R. Braddock	1876 - FL	1963 - TN
	5.	Olive B. Short	1883 - VA	1976 - TN
	6.	J. Lee Powell	1880 - TN	1941 - TN
	7.	Mary F. Moore	1883 - VA	1963 - TN
	8.	J. Sanderson Braddock	1847 - FL	1920s - FL
IV.	9.	Elizabeth N. Braddock	1849 - FL	1940s - FL
	10.	George David Short	1850 - VA	1924 - VA
	11.	Margaret N. Thompson	1858 - VA	1914 - VA
	12.	Tipton Powell	? - TN	? - TN
	13.	Cordelia Baughman	? - TN	? - TN
	14.	Hiram Moore	1838 - VA	ca 1920 - VA
	15.	Elizabeth Trigg Scott	1842 - VA	1910 - VA
V.	16.	John Spicer Braddock	1805 - FL	1863 - FL
	17.	Sarah N. Higginbotham	1813 - FL	? - FL
	22.	Margaret Ann ---	1828 - TN	1900 - TN
VI	32.	John David Braddock	1776 - GA	1841 - FL
	33.	Martha Bluet Christopher	1786 - FL	1861 - FL
	34.	Joseph Alexander Higginbotham	? - GA	? - FL
	35.	Mary Ann (Polly) Pinkham	? - FL	? - FL
VII	64.	John Cutler Braddock, R. S.	1743 - SC	1794 - GA
	65.	Lucy Ann Cook	1750 - GA?	? - FL
	66.	Samuel Spicer Christopher	? - MD?	1811 - FL
	67.	Mary Greenwood	? - GA?	? - FL
	68.	Burroughs Higginbotham	? - GA	? - FL
	69.	Isabella Dona ----	? - FL	? - FL
VIII	128.	Capt. David Cutler Braddock	ca 1717 - MA	1769 - GA
	129.	Mary S. Lyford	ca 1720	? - GA
	130.	James Cook, R. S.	?	1786 - GA
	131.	Sarah -----		
	132.	John Christopher of Maryland		
	133.	Martha Watson of Maryland		
	134.	William Greenwood of VA and London		
	135.	Elizabeth Bryan of GA		
	136.	Elijah Higginbotham of VA and GA		
IX	256.	Capt. John Braddock	ca 1670 -ENG	1734 - MA
	257.	(2) Mary Cutler (my ancestor)	1682 - MA	? - MA
	258.	Capt. William Lyford (Loyalist)		Bahamas
	259.	(1) my ancestor (2) Ann Watt		
	270.	Joseph B. Bryan of SC		
	271.	Mary S. Story		
X	514.	Dr. Johannes de Mesmaker	Holland	? - MA
XI	1030.	Capt. Edward Cowell	ca 1620 - ENG	1690 - MA
	1031.	(1) Margaret ----- (my ancestor) (2) Sarah Hobart		

QUERIES

- HENDERSON** John HENDERSON appears on land records in 1803 for the Steubenville Land Office, Jefferson Co., Ohio. He was the father of five grown children: John, Robert, Mary, Thomas, and William. All of them were born in Ireland. They were most likely from Ulster. Where and when?
- ARMSTRONG HENDERSON** Anne ARMSTRONG married William HENDERSON in 1813, Jefferson Co., Ohio. Her younger brother, William, was born in 1810, Co. Cavan, Ireland. The ARMSTRONG family moved to Jefferson Co., in 1811. William was a tinner at Logan, Hocking Co., Ohio. Who are Anne and William ARMSTRONG'S parents?
- BERGER** The tombstone of Jacob BERGER shows he was born 21 DEC 1745, Germany, and died 25 JAN 1837, Pittsylvania Co., VA. His wife's name was Christina. Who were his parents?
- Mary Leigh Johnston, 837 Margo St.
Santa Barbara, Ca 93109
- COLEMAN YAEGER** Nancy COLEMAN married Jacob YAEGER in Madison Co., Virginia in 1795. They moved to Fayette Co., Kentucky that same year. Who are her parents?
- TOLL** Steven TOLL was in Adams Co., Ohio in the 1790's. He was a miller on Elk Run Creek from Fauquier Co., Virginia. Who are his children? Who was his wife?
- Frances Ramsay, 411 Carlo Drive
Goleta, Ca 93117
- BONNER** Charles S. BONNER lived in Pittsburgh, PA. He was a conductor on the P & LE Railroad. His daughter, Elizabeth, was born in 1865 in Pittsburgh. She died 1891, Youngstown, Ohio. Who was her mother? Is there more information about Charles?
- TOWNSEND** Elbert Bennett TOWNSEND was born about 1806. He was buried in 1866 in Cleveland, Ohio. Where was he born? Who were his parents? Was his father Jonathon TOWNSEND?

Continued next page

Query continued from previous page

- DARBY
WARD William DARBY married Rhoda WARD. Rhoda was born in 1798 and died in 1880. Their daughter, Elizabeth, was born in Freedomia, NY in 1823. Who are the parents of William DARBY and Rhoda WARD? Who is Blanchard DARBY? Is he the brother of Elizabeth or her uncle?
Helen Noble, 1702 Cliff Drive
Santa Barbara, Ca 93109
- BEEBE
NORTON Martha (Patty) BEEBE was born about 1760 in Canaan, CT. She was the wife of Nathaniel NORTON. He was a distiller. They both died in East Bloomfield, NY, in 1807. He was buried in Goshen, CT. Their daughter, Lucretia, was born in 1787 in East Bloomfield. Who are Martha's parents?
- CLARK
TAINTOR Esther CLARK of Colchester, CT was born about 1725. She married John TAINTOR Dec. 12, 1751. A daughter, Betsy, was born 1752 in Colchester. Who were Esther's parents?
- HARVEY Captain Luther HARVEY was born 1789 in Burlington, VT. He died 1878 in Monroe, MI. He sailed a supply vessel on Lake Erie during the war in 1812. He also had a mail route on the coast of Lake Erie. Who were his parents? Was his father Joel, who died 1815, Milan, Ohio?
Morton Noble, 1702 Cliff Drive
Santa Barbara, Ca 93109
- DOUW
SMITH
WILKES In Dutch Ref. Church, NYC, John (Jan) WILKES m. 10 March 1705 Margaretje DOUW. In same church 24 July 1739 their dau. Cornelia WILKES, bpt. 4 Oct 1713 m. Charles (Jeffrey?) SMITH. Wish ancestry for all.
- MILLER
(MUELLER)
DIFLO
(DIFFLOW) Francis (Franz) MILLER m. (1) Dorothy DIFLO ca 1861. She d. ca 1864. m. (2) her sister Catherine ca 1864/5. All from Berne, Switz. Resided NYC. Wish information for both families.
- COURT
(COERTEN)
JANS Barent COURT m. Annetjie JANS 27 Dec 1664 Dutch Ref. Church, NYC. Was Annetjie dau. of Anneke JANS? Wish info both families.
Beatrice Mohr McGrath
4746 Amarosa St.
Santa Barbara, CA 93110

QUERIES

- HAGERTY** Does anyone know anything more of William HAGERTY, wife Sarah (possibly BEATTY); both born in PA. Last we find of William is in 1767 Anson Co., N.C. - a deed of transfer.
- ?BEATTY?**
- TOWNSEND** William must have died in N. C. Sarah and her grown children moved on to GA. My line was their daughter Mary HAGERTY who m. Samuel TOWNSEND, a Rev. soldier. Sarah d. in GA. Mary and Samuel TOWNSEND moved on to ALA.
- ZIMMERMAN** BARNABAS ZIMMERMAN and his son Philip ZIMMERMAN both fought in Rev. Would like to know more on this line.
- TOWNSEND** Philip's daughter, Sarah ZIMMERMAN m. William TOWNSEND, son of Samuel and Mary Hagerty Townsend.
- McKENZIE** Asa McKENZIE (b. 1779) and wife Janet/Genie/Jina ROPER (McKinzie) m. 1799. Their son LACY/Lasa McKENZIE (b. 1801/2 Pulaski Co., Ky. m (1) Sarah MOORE 1822 in Pulaski Co., Ky. She d. soon - only 1 ch, James; (2) he m. Ann COFFER - don't know when or where, prob. Ky. They moved to MO where 4 ch were born. Lacy went on to Texas before wife and children. He was a Texas Ranger at Fort Houston, Anderson Co. in 1838-9, at what is now Palestine; was wounded while fighting hostile Indians. They moved to Travis Co., TX before he died. Would like to know more about these people or earlier ones.
- Mrs. Harriet Goddard
1017 Oak Drive
Liberty TX 77474
- BEAZLEY** Ephraim BEAZLEY, Sr., Essex Co., PA c. 1757, wife Winnifred PLEASANTS Need Ephraim's parents, Birth Date and place.
- MOSELEY** Sgt. Thomas MOSELEY, Rev. War, b. 1756 Prince Edward Co., VA wife Judith Kinney or Finney Need parents, dates, etc.
- TRASK** Samuel TRASK. Need birth date and parents, prob. b. Maine wife, Sarah GIFFORD. Samuel d. Nevada Co., CA., 1851.
- COX,** Melvin Guy COX. Need parents and dates m. Elizabeth Anne BUMPASS Aug. 29, 1831, Nashville, Davidson Co., TENN.
- Dorothy M. Walt
833 Cieneguitas Rd.
Santa Barbara, CA 93110
- DAVIS** In 1742 Jonathan "John" DAVIS b. Wales c. 1730 emigrated to America with brothers James and Dennis, probably landing at Philadelphia; Jonathan was Rev. War soldier from Va. (DAR Patriots Index p. 179) m. Lucy GIBBS, b. 1738, VA, 1756 Philadelphia; c. 1757 moved to Orange Co. Va, where 9 ch were born - have names of 7; c. 1800 moved to Wilkes Co. GA. He d. 1 Mar 1817 Will prob. 1817 divided Davis plantation between 2 sons, Rev. Jonathan and Rev. William DAVIS (both Baptist ministers); Lucy d. 1818; both buried in Davis Family Cem. Wilkes Co., GA. Seek names of Lucy's parents, brothers and sisters, marriage date.
- Evelynne M. Ritter
61 Calla El Halcon
Camarillo, CA 93010

QUERIES

DAVIS Rev. William² DAVIS (Rev. Jonathan "John"¹) 5 Feb. 1789
 EASTON in Philadelphia m. Nancy EASTON, b 1768 ,place unknown.
 Need her parents and exact birth date. Lived for a short
 time in Orange Co., VA before moving to Wilkes Co., GA
 1789-90 12 ch. all b. GA; William ordained 1793; 4
 sons - Rev. William b 8 Dec 1796 m. Joyce JOHNSON
 Rev. Jonathan b 17 Nov 1798 m(1)widow Mary Elizabeth
 Johnson (2) Mary Bledsoe Rev. James b 22 Jan 1805 m.
 Louria HUDSON ; Rev. Jesse Mercer b 25 Jan 1807 m(1)
 widow Sophia BURTON (2) Elizabeth GILBERT All were
 Baptist ministers. Older brother, Rev. John² DAVIS
 b. 1759 m. Mary EASTON Were Mary and Nancy EASTON re-
 late? How? Need death dates for each. Also data
 re brothers and sisters and exact birth date for Rev.^{3m}.
 Family records show William b. 1 July 1765. DAR Patriots
 Index p.181 shows William L. b 1-7-1765 d 31 Oct 1831
 m. Nancy EASTON: Wish to fill in gaps in family history.
 Mrs. Evelynne M. Ritter
 61 Calle El Halcon
 Camarillo, CA 93010

SHAW Seeking ancestors/descendants of "Lizzie" Elliot SHAW
 SHOVE? (SHOVE?) residing in Los Angeles area July 1936.

Jane Potter
 P. O. Box 95
 Linwood MA 01525

ANCESTORS TABLES - Charts 39 - 53 Charts 1 - 38 were listed
 ANCESTORS WEST Vol. 9, No. 3, p. 87 Sept. 1983

Chart No.	Name	ANCESTORS WEST
39.	Muriel Riemer Graham for grandson Graham R. Hildebrandt	1983 Dec. Vol. 9/4 p.129-130
40.	Marie LaBreche	1984 March 10/1 9-11
41.	Norman E. Scofield for bro. Anthony H.	June 10/2 47-51
42.	Isaac & Joy(Tenney) Bonilla for grandchildren - correction	1985 Mar. 11/1 11-12 June 11/2 56
43.	Margaret Savary Shanholtzer(Mrs. Robert S.)	March 11/1 12-14
44.	Morton Noble, Jr.	June 11/2 51-55
45.	Helen Bonner Harper(Mrs. Morton Noble Jr)	11/2 56
46.	Janet Gibson Cloud (Mrs. Preston)	Sept. 11/3 102-104
47.	W.D. "Sandy" Sanford	Dec. 11/4 139
48.	Harold J. Thelin 1986 March	12/1 18-20 (not 188-188)
49.	Janet Flewell Thelin(Mrs. Harold J.)	20-21 (not 188-189)
50.	Carol Fuller Kosai (Mrs. Kenneth)	1986 June 12/2 52
51.	Kenneth Kosai	this issue 12/3 96
52.	Grace (Downie) Ekvall	" " 98-99
53.	Anne Braddock	" " 102
No. 2	Helen Murray Miller, revised and enlarged	Dec '83 125-128

CONTRIBUTIONS BY MEMBERS OLDER IN AGE may include

1. EXPERIENCE in life, travel, leadership, diversity of interests
2. ABILITY TO COMMUNICATE by word of mouth and writing
3. CONTACTS with others having similar interests
4. ENTHUSIASM for Genealogy and History - contagious.
5. SPECIAL ABILITIES of the individual, as a family member, etc.

GLEANINGS

NEWSLETTER No. 50 HAWAIIAN HISTORICAL SOCIETY, organized 1892,
 May 1986 560 Kawaiahao St. Honolulu Hawaii 96813
 Contributed by SBCGS Member Carolyn Crawford, Val Verde #N 27
 900 Calle de Los Amigos, Santa Barbara, CA 93105

ANNUAL MEETING of Membership May 8, 1986 at Queen Emma Summer Palace, 2913 Pali Highway, Nuuanu PROGRAM: THE HISTORY OF HAWAII'S NEWSPAPERS. A slide show presentation and lecture by Helen Geraci-mos Chapin, Ph. D., well-remembered for her comprehensive study of the Greek community in the islands. She is editor of the Hawaiian Journal of History and Associate Vice President and Dean of Special Programs at Hawaii Pacific College

SCOT IN HAWAII - ORAL HISTORY PROJECT The Caledonian Society of Hawaii announces completion of a 10-year oral history project with the recent report "SPEAKING OF SCOTS IN HAWAII". The taped and transcribed interviews of the 26 narrators have been placed in the Hawaiian Historical Society Library for use by scholars. An index of the narrations is being compiled. The study includes immigrants from Scotland between 1880 and 1930. The "Scotch Coast" in the Hamakua district of Hawaii is well-known in the history of the Big Island, but the extent of Scottish influence in other parts of the island and throughout the other islands has come into recognition through this project.

The development of a census of immigrants from Scotland from the arrival of Cook in Hawaii is the new focus of work by the Scot in Hawaii Committee. The names of relatives, friends, and other known Scots who came to Hawaii are solicited by The Scot in Hawaii Project, c/o The Caledonian Society of Hawaii, P. O. Box 4164, Honolulu, Hawaii. 96813.

Illustration and note: The Society's Library is now closed for the duration of the construction project at the Library building. The Hawaiian Mission Children's Society is adding Museum staff offices, a gift shop, Museum storage area, and a multipurpose room to the building, and the library reading room will be remodeled. We expect to reopen in late fall 1986. Researchers with special problems please call the Society office at 537-6271.

Member Carolyn Crawford also supplied a clipping from the April 20, 1986 Honolulu Advertiser. UH PROF TO TRACE HAWAIIAN' LINEAGE THROUGH GENES is the title of a column by Bob Krauss. Analysis of mitochondrial DNA obtained from Hawaiians will be compared in the laboratory in the Biomedical Science Building with that obtained by Dr. Rebecca L. Cann, new associate professor of Genetics of the John A. Burns School of Medicine at the U. of Hawaii from 112 persons who contributed blood samples which she analyzed for her doctor's thesis at the U. of California at Berkeley and with other samples now being taken by other researchers. These samples represent family lines which go back to early Asia, Africa, Europe, America, the Middle East, Australia and New Guinea. The purpose - to determine where modern humans come from. Dr. Cann is fascinated by the ability of Hawaiians (Polynesians) to recite a family line from memory, instead of from written records. One complication in the use of mitochondrial DNA as a genealogical tool is that this particular substance is passed down only through the mother, she said. As a result, it will not trace family lines through the father as do most oral and written genealogies. "Tracing the female genealogy is a lot more accurate."

Note: Your Editor was interested in the reference to the Hawaiian Mission Children's Society, because a friend with relatives in Honolulu gave to that society an 8 x 10 reduction of a 15 1/2" x 23 1/2" map of THE GREAT CRATER OF HALEAKALA FROM Hawaiian Gov't Maps of 1869 and 1884, Scale 1-15840 or 4 ins. = 1 mile, S. E. Mann, Del. Mar. 1884.

NEW IN THE LIBRARY

BOOKS

1. Augusta County, Virginia Marriages 1748-1850 by John Vogt & T. William Kethley, Jr. Donated by Author.
2. Santa Barbara; El Pueblo Viejo. A Walking Guide to the Historic Districts of Santa Barbara by Rebecca Conard & Christopher H. Nelson. Donated by Marjorie Nefstead.
3. The Wuertemberg Emigration Index. Vol. I. Compilers: Trudy Schenk, Ruth Froelke & Inge Bork
4. Polk County, Arkansas 1860 Census by Georgia Helderlein. Donated by Author.
5. Dozens of Cousins. Vol. I. Pub. by Napa Valley, CA Gen. Soc.
6. Richard Ratcliff of Lancashire, England & Talbot Co., MD & His Ancestors & Descendants 1194-1965. by Clarence Ratcliff. Donated by Elaine Dicks.
7. Genealogical Research Essentials by Norman E. Wright & David H. Pratt. Donated by Elaine Dicks.
8. Simplified Genealogy for Americans by E. Kay Kirkham. Donated by Elaine Dicks.
9. Research in American Genealogy by E. Kay Kirkham. Donated by Elaine Dicks.
10. Some Notable Families of America by Annah Robinson Watson. Donated by Dorothy Walt.
11. Early Pennsylvania Births 1675-1875. Charles A. Fisher; Compiler. Donated by Dorothy Walt.
12. 19th Century Tennessee Church Records; Vol. 2 by Byron & Barbara Sistler. Donated by Kathy Maddux.
13. California - Colonial History; Time - Line 1769-1783. Donated by Kathy Maddux.
14. North Carolina "The Goodliest Land". Donated by Kathy Maddux.
15. Cockpit of the Revolution. The War of Independence in New Jersey by Leonard Lundin. Donated by Kathy Maddux.
16. North Carolina Marriages and Deaths. 1826-1845 by Carrie L. Broughton. Donated by Kathy Maddux.
17. Pennsylvania Oaths of Allegiance by William Henry Egle. Donated by Kathy Maddux.
18. The Lexington Presbytery Heritage by Howard McKnight Wilson. Donated by Kathy Maddux.
19. Pennsylvania Marriages Prior to 1790. Compiled by John B. Linn.
20. Directory of Scots Banished to the American Plantations 1650-1775 by David Dobson. Donated by Priscilla Gladwin.
21. Vital Records of Acton, Massachusetts to the year 1850. Donated by Priscilla Gladwin.
22. The Natchez Court Records 1767-1805 by May Wilson McBee. Donated by Priscilla Gladwin.
23. History of the Town of Acton, Massachusetts by Harold R. Phalen. Donated by Priscilla Gladwin.

NEW IN THE LIBRARY

24. Tennessee Divorces 1797-1858 by Gale W. Bamman, C. G. & Debbie W. Spero. Donated by Evelyn Fetter.
25. Summer Soldiers by James C. Neagles.
26. The Organization & Administration of the Union Army 1861-1865 by Fred Albert Shannon. Vol. I & II.
27. Delaware. A Guide to the First State.
28. Of Plymouth Plantation 1620-1647 by William Bradford.
29. Pasadena, California, Historical & Personal by J.W. Wood.
30. Frontier Living by Edwin Tunis.
31. Surname 1985. Genealogical Friends of the Pasadena Public Library. Donated by Carol Hamilton.
32. The Complete Peerage of England, Scotland, Ireland, Great Britain & the United Kingdom. Edited by Hon. Vicary Gibbs. Parts in Xerox copies. Vol. 2. in Binders. Donated by Dorothy Walt.
33. Ancestor Charts submitted by members of the Gen. Soc. of Monroe Co., Michigan. Donated by Morton Noble.
34. Marriage, Census and other Indexes for Family Historians. Jeremy Gibson; Editor. England.

FAMILY HISTORY PERIODICALS

1. Ballew: Ballew Family Journal, April 1986.
2. Coryell: Coryell Newsletter. July 1986. Donated by Burr Coryell.
3. Green: Green Family Quarterly, June 1986. Donated by Harry Titus.
4. Huxford: Huxford Gen. Soc. Magazine. June 1986. Donated by Harry Titus.
5. Martin: Martin Family Quarterly. Feb., May 1986. Donated by Harry Titus.
6. Warren: Warren Family Historian. Feb. 1986. Donated by Ruth Scollin.

NEW EXCHANGE

SCOTLAND: Aberdeen & North-East Scotland Fam. Hist. Soc. Winter 1985 & Directory of Members Interests Dec. 1985.

EXCHANGES AND QUARTERLY DONATIONS

ALABAMA: Alabama Fam. Hist. & Gen. News. Vol.7;2,3, 1986

ARIZONA: Sun City Genealogist. Summer 1986, Surname Index Vols 1-5.

AUSTRALIA: Ancestral Searcher. March 1986.
Generation, March 1986

BELGIUM: Vlaamse Stam, May 1986

CALIFORNIA: Annual Directory of California Genealogical Societies. 3rd Edition. May 1986. Compiled California State Gen. Alliance.
Ash Tree Echo. Jan., Apr., July 1986
Calif. Central Coast Gen. Soc. Vol.19:2
Calif. Gen. Soc. Newsletter. Apr., June 1986

NEW IN THE LIBRARY

- Heartland Quarterly May 1986
 Leaves & Saplings. Vol. 14:1,2, 1986
 Lifeliner. June 1986
 Marin Kin Tracer. Summer 1986
 Noticias. Spring 1986. Donated by Ruth Scollin.
 Orange Co. Quarterly. June 1986.
 Rabbit Tracks. Winter 1985, Spring, Summer 1986.
 Redwood Researcher. May 1986.
 Root Digger Quarterly. Spring, Summer 1986.
 Santa Maria Valley Gen. Soc. & Library. Fall-
 Winter 1985.
 The Searcher. Vol.23:5,6,7, 1986
 Sonoma Searcher. June 1986.
 So. Humboldt Roots & Trails. April 1986.
 Surname Searcher. 1984 Edition.
- CONNECTICUT: Connecticut Nutmegger. June 1986. Donated
 by Emily Thies.
- ENGLAND: The Banyan Tree. #26, 1986.
 Essex Family Historian #40 + Supplement May
 1986.
 Federation of Family Hist. News & Digest. Apr.
 1986.
 Genealogists' Magazine March 1986.
 Hertfordshire People. Spring 1986.
 International Society for British Genealogy &
 Family History Newsletter. Apr-Jun 1986.
- FLORIDA: Florida Genealogist. Spring 1986. Donated by
 Harry Titus.
 Geneagram. Apr., May, June 1986.
 Rotagene. Jun., July 1986.
- GEORGIA: Ancestors Unlimited Edition. June 1986.
 Central Georgia Gen. Soc. Quarterly. Mar. 1986.
 Genealogy Unlimited. May 1986.
 Georgia Gen. Soc. Quart. Summer 1986. Donated
 by Harry Titus.
- ILLINOIS: Cornsilk. Summer 1986.
 DeWitt Co. Gen. Quarterly. Spring 1986.
 Stalker. Vol.6:1, 1986.
- INDIANA: South Bend Area Gen. Soc. Summer 1986.
- IOWA: The American Genealogist. July/Oct. 1985.
 The Ill-Ia-Mo Searcher. July 1986.
- KANSAS: Kansas Kin. May 1986.
 Midwest Hist. & Gen. Register. Apr-June 1986.
- KENTUCKY: Bluegrass Roots. Vol.XI:1-4, 1984, Vol.XII:1-
 4, 1985. Donated by Marilyn Owen.
 Filson Club History Quart. Jan. 1986.
 Kentucky Ancestors. Vol.20: 3,4, 1985, Vol.21:
 1-4, 1986.
 Longhunter. Summer 1986.
- LOUISIANA: Le Baton Rouge. May 1986.
- MAINE: Downeast Ancestry. April, June, 1986. Donated
 by Ruth Scollin.
 Second Boat. May, July 1986. Donated by Ruth
 Scollin.
- MARYLAND: Maryland Gen. Soc. Bulletin. Winter 1978.
- MASSACHUSETTS: Car-Del Scribe. Mar., May 1986.

IN THE LIBRARY

Sample copies of periodicals recently received by our library are:

GENEALOGY UNLIMITED (2511 Churchill Drive, Valdosta, GA 31602) bills itself as "A society dedicated to family search". This 12-page issue provides an article on "Cousins", notices of workshops, index of a cemetery in Lowndes Co. GA and queries. Individual membership is \$10.00. (Frequency of publication not given.)

M.I.O. CONNECTION (published quarterly by Family Researchers, 6189 S. Belsay Rd., Grand Blanc, MI 48439 - \$7.50 per yr.) contains primarily queries and ancestor charts from subscribers researching in Michigan, Indiana and Ohio. Also listed are "M.I.O. Friends" who will do local research and an article on the Alien County (Pt. Wayne, IN) Public Library which has one of the largest genealogy collections in the country. 20 pages.

THE GENEALOGICAL COMPUTER PIONEER (published monthly by Posey International, P.O. box 338, Orem, UT 84057 - \$25 for 12 issues) announces a new format that purports to include "all the latest news from the genealogical, genealogical computer, and computer worlds". The April/May issue includes software reviews and updates, as well as an article describing one users numbering system used with the Family Roots program. 40 pages.

Also new from the Federation of Family History Societies:

ANNALS OF THE POOR (A McLaughlin Guide pub. by FFHS, \$1.50 airmail overseas) is another delightful English reference booklet written by Eve McLaughlin who makes one feel fortunate to have ancestors that landed on the poor roles. She describes some of the records generated, where they may be found and weaves the whole together with history and humor (humour). 17 pages.

INDEX TO CENSUS REGISTRATION DISTRICTS (by M.E. Bryant Rosier and J.K. Marfleet, pub. by FFHS, price not indicated) is an aid for locating localities more quickly in the English census of 1841-1881. Listed are the Registration Districts found within the counties (not necessarily the parishes, hundreds, etc.). 26 pages.

Also announced by the Federation is a new (second) edition of **MARRIAGE, CENSUS AND OTHER INDEXES** (£1.50 overseas airmail) which has "four extra pages, many more indexes listed, and others with important updates, changes of addresses, new rates, etc."

The last three booklets can be ordered through Ruth Pelch at our Sales Table or from Mrs. Nora Porter, The Federation of Family History Societies, 17 Foxlea Road, Hailey Green, Halesowen, West Midlands B63 1DX.

NEW IN THE LIBRARY

- MISSOURI: Fed. Of Gen. Soc. Newsletter. Jan.-Feb. 1986
Genealogists' Exchange. May, June 1986.
Platte Co. Hist. & Gen. Soc. Bulletin. Spring 1986.
- NEBRASKA: Ancestors Unlimited. May-June, Mar.-Apr. 1986.
- NEW MEXICO: Pecos Trails. May 1986.
- NEW YORK: Suffolk Co. Hist. Soc. Register. Summer 1986.
Donated by Harry Titus.
Tree Talks. Dec. 1982, Dec. 1985, Mar., June 1986. Donated by Wes Kingsley.
- NORTH CAROLINA: Esauw Huppeday. May 1986.
- OHIO: Certified Copy. Winter 1985, Spring 1986.
On The Trail. Vol.IX:1, 1986.
Our Heritage. Vol.8:1, 1986.
The Palatine Immigrant. Winter/Spring 1986.
Donated by Harry Titus.
- OKLAHOMA: Pontotoc Co. Quarterly. April 1986.
- OREGON: Oregon Gen. Soc. Quarterly. Summer 1986.
Timber Trails. July 1986.
- PENNSYLVANIA: Greene Hills Echo. Winter 1981
Laurel Messenger. May 1986.
- SOUTH CAROLINA: So. Carolina Historical Magazine. April 1986. Donated by Harry Titus.
So. Carolina Magazine of Ancestral Research. Spring 1986. Donated by Harry Titus.
- TEXAS: Austin Gen. Soc., June 1986.
Cypress Basin. April 1986.
Dallas Quarterly. June 1986.
Footprints. May 1986.
The Herald. Summer 1986.
Reflections. Dec. 1985, Mar. 1986.
Victoria Crossroads of So. Texas. Spring 1986.
Yellowed Pages. Vol.XVI:2, 1986
- UTAH: Genealogical Helper. May/June 1986.
- VERMONT: Branches & Twigs. Spring, Summer 1986.
- VIRGINIA: Genealogical Computing. Vol.6:1, 1986.
- WASHINGTON: Bulletin of the Whatcom Gen. Soc. Summer 1986.
Clan Digger. June 1986.
Eastern Wash. Gen. Soc. Bulletin. June 1986.
Seattle Gen. Soc. Bulletin. Spring 1986.
Tri-City Bulletin. Vol. 26:1,2, 1986.
- WISCONSIN: Nuggets. April 1986.

DOZENS OF COUSINS, Vol. One. Napa Valley Gen. Soc. 1979. 8½ x11
419 pp. index-3 columns to a page pp 362-419, consists of Ancestors
Tables of Seminar Participants compiled by Sandra Lyon Ogle and
Jeannette Wilson Reynolds and Zandra Horn.

The Highlander Vol. 24, No. 2A April, 1986, is the 1986 Directory Issue.
In 7 sections. Clan Societies listed alphabetically by clan pp 1-5
St. Andrews and Caledonian Societies listed geographically. Pipe bands
Editorial index of 1985 issues Vendors Miscellaneous Scottish Busi-
ness and Cultural groups in the U. S. and Scotland. Clan Chiefs
pp 53-56 Chiefs of Branch Clans p. 56 THE HIGHLANDER, Editorial and
Advertising Office P. O. Box 397 Barrington, IL 60010 \$10.50 a year.

GLEANINGS

From Charlotte Co. Gen. Soc. GENEAGRAM, Port Charlotte, FL, Vol 11 #2
Feb., 1986, p. 12, p. 12:

SIGNERS OF THE DECLARATION OF INDEPENDENCE FELT WAR'S HARDSHIPS

Have you ever wondered what happened to those men who signed the Declaration of Independence?

Five signers were captured as traitors by the British and were tortured before they died. Twelve had their homes ransacked and burned. Two lost their sons in the Revolutionary War; another had two sons captured. Nine of the 56 fought and died of wounds or the hardship of the Revolutionary War.

What kind of men were they? Twenty-four were lawyers and jurists. Eleven were merchants; nine were farmers and large plantation owners. Men of means and well educated.

They signed the Declaration of Independence knowing full well that the penalty would be death if captured. They signed and pledged their lives, their fortunes, and their sacred honor.

Vandals, soldiers, or both, looted the properties of Ellery, Clymer, Hall, Walton, Gwinnett, Heyward, Rutledge and Middleton. Francis Lewis had his home and properties destroyed. The enemy jailed his wife, and she died within a few months.

Such were the stories and sacrifices of the American Revolution. These were not wild-eyed, rabble-rousing ruffians; they were soft-spoken men of means and education. They had security, but they valued liberty more.

Standing tall, straight and unwavering, they pledged:

"For the support of this declaration, with a firm reliance on the Protections of the Divine Providence, we mutually pledged to each other, our lives, our fortunes, and our sacred honor."

They gave us an independent America. Can we help it?

Robert R. Law, Sr., Jacksonville (Florida)

From Geneagram, Vol 11, No. 3, March 1986: p. 12

PENMANSHIP OF EARLY CENSUS ENUMERATORS: Deciphering hand writing of the early census takes is often a very difficult task. Badly faded pages and perhaps sloppily written names, along with phonetic spellings can result in transcription errors. After considering the normal spelling, consult the table below for alternate letter combinations and possibilities.

<u>ACTUAL LETTER</u>	<u>POSSIBLE TRANSCRIPTION</u>	<u>ACTUAL LETTER</u>	<u>POSSIBLE TRANSCRIPTION</u>
A,a	N,O,o,u	lr,ls	b,h,k
B,b	K,P,R,h,lr,ls,t	M,m	W,in,ne,rn
C,c	E,O,e,i,o	N,n	A,V,ee,u
cl,ct	d	ne	M
D,d	O,cl,ct,el,et	O,o	A,C,D,a,c
E,e	C,c,i,l	P,p	B,R,T,j,ss
ee	N,u	Q,q	Z,g,j,y,z
el,et	D	R,r	B,K,P,i,s,v
F,f	L,T,l,ss	rn	m
Fl	H	rv	w
G,g	T,Y,Z,j,q,y,z	S,s	L,A,r
H,h	Fl,Th,Tl,b,k,ln	ss	f,p
I,i	J,Y,c,e,l,r	T,t	F,G,L,P,b,l
in	m	Th,tl	H
J,j	I,Y,g,p,q,y,z	U,u	V,a,cc,n,v
K,k	B,R,h,le,lr,ls	V,v	N,U,r,u
L,l	F,S,T,Z,e,f,i,t	W,w	M,m,rv
Lc	K,k	Y,y	G,I,J,c,j,z

BOOK REVIEWS

AUGUSTA COUNTY (VA) MARRIAGES, 1748-1850, John Vogt, T. William Kethley, Jr., 1986, Iberian Pub. Co., Athens, GA, ISBN No. 0-935931-23-6, 414 pp. paperback.

In 1738, at its greatest extent Augusta County included the area from its northern border with the newly created Frederick Co. southward to Virginia's southern limits and westward over all the territory claimed by Great Britain to the Mississippi. Ten counties and nearly all of the states of X VA, KY, OHIO and ILL and portions of PA claim derivation from Augusta's further subdivisions-including 1754 Hampshire (W VA) from a northern portion;

1770 Boutetouri (VA) from which 48 counties- VA, W VA and KY were later formed.

During the American Revolution all except one (Bath) of the remaining subdivisions were developed. The last county, Bath, was created in 1791, and left Augusta County in its present form.

At p. 414, an 1850 Virginia County map follows a chart of the origin of Augusta County.

In pp. v-xi of the Introduction an extremely helpful analysis is set out. Part 1, Surname frequency, showing number of Surname Occurrences in the Men's List; Part 2 lists Men's Names Alphabetically, pp 29-220; Part 3 Women's Surnames, pp 221-407. This Women's List opens with ---- and contains over 6 pages (221-227) of unidentified women, with man's name and date given. All but five are licenses only., 5 name one or more bondsmen. Only 2 give women's first names.

Researchers are warned to use creativity in searching all possible variants of a name.

Appendix 1 is a list of Ministers performing marriages as reported in Augusta County clerk returns (pp. 408-413) with their religious affiliations, many with places and dates of service. Where surnames are at odds between the Clerk's recording of the bond and the minister's return, both entries have been retained and a note of variation placed in the marriage record. Also where names are identical but years vary, both dates are shown. In some instances other clues appear such as describing the man or woman as of a place other than the location of the minister.

GENEALOGICAL COLUMN CLIPPINGS OUR KEYSTONE FAMILIES

Currently contributed by Doris Crawford - Many earlier clippings donated by Dorothy Walt.

Address all correspondence to: SCHUYLER BROSSMAN, P. O. Box 43, Rehrersburg, PA 19550 Great diversity of coverage. All queries must have a Pennsylvania connection, include at least one date and should not be more than 150 words. OUR KEYSTONE FAMILIES.

Column 1019 THE HAUFFMAN-TRAUTMAN FAMILIES OF BERKS & LEBANON COS. PA. 6 queries.

1020 LEBANON PA CEMETERY MAP CUMBERLAND CO. PA CEMETERY LIST

FAMILY PERIODICALS 1986 Ed. pub by Merle Ganier 2108 Grace St.

Four Worth TX 76111 \$4.50 174 pp 2' p. list of newspapers

SHADE FAMILY HISTORY Queries, 9 numbered

1021. ZIMMERMAN FAMILY of Berks & Schuylkill Cos. Pa. SURNAME FILE Amarillo TX Gen. Soc. maintained with Amarillo Library. 3 x 5 cards supplied by Society, 1-10 cards \$ASE + 22c; and 30c for 20 cards.

Amarillo Gen Society P.O. Box 2171, Amarillo TX 79189 8 queries.

OUR KEYSTONE FAMILIES (con)

Column 1022 WINT FAMILY of Lehigh and Northampton Cos. PA Reunions Osenreider-Ochsenreiter 25 May 1985 Tulpehocken(Trinity) UCC on old Rt 422 between Myertown and Stouchsburg, PA. For information on Osenreider Book, Clyde Osenreider, from Iowa, with rough draft of supplement, write Mary I. Osenreider 500 E. Quenn St. Cottage 12 Anville, PA 17003 SHEETS, LETMER Reunion 1 June 1986 contact Cleo McBride 2531-B Miller Park Circle Winston-Salem, NC 27103 MORGAN FAMILY 5th annual reunion 22 June 1986 contact Mrs. Paul Morgan Box 164 Pitman PA 17964 SHERK-SHIRK-SHERRICK-SCHURCH ?Family July 4-5, 1986 contact- James W. Sherrick P. O. Box 137 Edenboro PA 16412 Queries 6.

1023 LANCASTER CO. PA QUARTER SESSION RECORDS 1729-1792 3000 names Available from Gary T. Hawbaker P O Box 207 Hershey PA 17023 \$12.50 Pa. residents add 74¢ sales tax. Books for Sale - 2 listed. Judy Farmer 139 E. Cumberland Rd. Enola PA 17025 seeking suggestions as to research re train accident near Rome, GA 1810-1840 in which great uncle was killed. FAMILY NEWSLETTERS MILLER MONITOR, quarterly, \$12. Ed. Stella Hardy 1520 161st Ave. Grand Haven MI 48417

CHARTER CONNECTIONS Charter Family \$10 a year Gary L. Charter 1934 Keith Ct Wichita KS 67212 working on this 15 years; object listing of every Charter and to preserve for future on microfilm -1st reunion. FAMILY NEWTON quarterly newsletter \$12 a year of \$3.50 single copy first issue to be published July 1986 Jim Newton 312 Ross Ave. Hamilton OH 45013. BARNES BULLETIN Maxine E. Pence 911 Moyer ?St. Cheney WA 99004 first issue in 1986 29 pp. every name index. \$5. per issue.

THE KERLIN LINE Albert Edwards Box 586 Kahaheo HI 96741 first issue 28 pp free as long as supplies last. on "as needed" basis numerous spellings Keslin, Kerling, Kirlen, Kurlin, Kurlen; Curlen, Curlin, Curling, Culling, Carlin, Collin etc. Brossman suggested adding Gerling, Gehrling as this name also spelled Kerling-Kerlin. Brossman found own gg grandmother Hannah Gerling, Gehrling b 4 Jun 1774 Exeter Twp. Berks Co. PA d Feb 25 1842 w/o Frantz/Francis Krick III, a vet. of War of 1812 b 8 Feb 1776 d May 19 1863, at N.Y. City Library when looking through Pa. Gen. Mag Vol XXVIII p. 129 in article on the collection of PA German Baptisical Certificates owned by N.Y.C. Library; gave names of parents as Frantz Gerlin/Catherine Schlegel; Queries 6 numbered.

1024 National Gen. Soc. Newsletter Competition being sponsored for newsletters published by genealogical societies during 1986 - deadline Jan. 31, 1987; 3 classes 1) Societies with less than 300 members; 2) 300-1,000 3) over 1,000 members. INSTRUCTIONS FOR BEGINNERS IN GENEALOGY, NGS Research Aid No. 2 \$8. postpaid from NATL GEN. SOC. Education Division 4527 - 17th St. North, Arlington VA 22207.

GENEALOGY CONFERENCE PA Hist. & Museum Commission June 26-27 Holiday Inn, Grantville PA, 15 mi. east of Harrisburg 84 Family Newsletters Bette Butcher Topp, R3, Box 152, Chattaroy, WA 99003 reads column in Spokane WA Library and is a member of Eastern Wash. Gen. Soc. is now compiling new publication called "GERMAN QUERIES" on irregular basis, at least 25 pp for first issue; anyone may send in 5 free queries of not more than 50 words each with name & address. She also publishes 6 surname booklets. - ALEXANDER AGENDA BALDWIN BYLINES BUTCHER BLOCK FISHER FINDINGS STRATTON NOTES send SASE

Also published "A HISTORY OF THE KIDDOO FAMILY in the U. S. 1780 to 1981" 371 pp; illus. allied families; \$30 from Mrs. Topp. 5 Queries.

1025 HERITAGE QUEST MAGAZINE; described at length, as a genealogy technique magazine. Annual cost \$25. Address: Heritage Quest, Drawer 40, Orting WA 98360-0040. BERKS CO. PA MARRIAGES 1730-1800. 190 pp. \$15.+ \$2 postage Pa. sales tax 90¢. HP Pub Co. 4703 Ryan Ct Reading PA 19606. Reunion 7th annual-Clan Bell desc. York, Pa. For info write Irving Bell, PO Box 451, Springfield VT 95156 KERSNER-KARS(C)HNER June 15; Hagerstown, MD. contact Daniel Kershner, RI, Box 423, Falling Waters, WV; another May 25 Larned KS; Jim Kershner 1701 Winne Dr. Manhattan, KS

OUR KEYSTONE FAMILIES (con)

1026 LONB-BASHORE FAMILIES OF LEBANON CO., PA - from Robert W. Long 317 Plaza Apts., Lebanon, PA 17042. PALM-DOLL-WILLIAMS FAMILIES OF LEBANON CO. Questions raised by Elgin P. Kintner P O Box K, Marysville, TN 37801 GENIVY FAMILY NEWSLETTER, ed. Richard Hayden Gentry, 6151 Tompkins Dr., McLean, VA 22101; subscription to Vol V, issues 27-32, \$20 (1984-1986). THE BARNES FAMILY TREE, \$5 per yr. pub by The Family Tree Society, 450 Potter St., Wauseon, OH 43567, Reunions STUDEBAKER FAMILY July 18-20 1986, marks 250th yr since Peter, Clement and Heinrich Studebaker came to America in 1736. SASE for 6-page brochure to Sonia Ewald, 4343 S. State 202, Tipp City, OH 45371 Vol II The Studebaker Family in America, 1736-1986 now available \$40. FORTNA FAMILY reunion 22 June 1985 Lebanon, PA FORTHEY-FORDNEY-FUR-TNEY-FORTNA FAMILY reunion July 26, 1986 Strasburg, PA Dedication of Fortna marker July 27. Info- John E. Fortna, 759 N. Jefferson Ave. Sarasota FL 33577 or Helen Reightler 627 Pine St., Lebanon, PA 17042. CORRECTION OF COLUMN 1020 query from Elinor W. Jackson, 222 Rivera, Wichita KS 67211 name Richard MILLS (not Wills) of h. of Elizabeth Wheatley 6 Queries

1027 HIGGINS ANCESTORS family history pub. by Richard & Kathryn Hott, 10423 Oakhill Ct., Adelphi, MD 20783, hard cover, 250 pp. \$25. Allied Ditzler family, pp 43-87. Other pubs. GOLNER ANCESTORS, \$25 200 p.; HOTT ANCESTORS, 250 pp. \$25. from Richard D. Hott, above. DAUPHIN-LEBANON COUNTY MARRIAGES 1785-1810, . Book shows only that man and woman appear as husband and wife, in a court record. It is not a marriage record. soft-cover, spiral bound, 68 pp, including introduction and maps, Annette K. Burgert, 691 Weavertown Rd. Myerstown, PA 17067, \$13 plus \$1.50 postage. Write her, citing this column, asking for list and prices of other books. Mention this column. Reunions SWOPE FAMILY 18th Jun 29, Tulpehocken UCC, Millard'sville, Contact - Emily Swope Morse, 42 Main Terrace, Bloomfield NJ 07003 TERRELL FAMILY (various spellings) Terrell Soc. P.O. Box 1354, Douglasville, GA 30133; 3 p. history; Tirel from village on Seine River, France; Tyrrell, England and Ireland, New England where name underwent many changes, including McTerrell; Newsletter, Terrell Trails. Queries 3. 1028 SEARCH FOR BENJAMIN REAM Inquiry from Ronald Otto 16828 Willow Ln. Dr., Timley Park IL 60477 Reunions RANCK-RANK Family 258th anniversary in America 19 Jul 1986, Address by Rev. Dr. Byron K. Horne on "Some of the Rancks of Early Lititz, PA", For info write Harriet M. Ranck, 300 Valleybrook Dr Lancaster PA 17601 SHOCKEY Family reunion, Shockesville 6 July 1986. Contact Ralph M. Shockey, R2, Box 1260 Berkeley Springs, WV 25411. KAUFFMAN FAMILY 6th annual reunion 22 Jun 1986 Strausstown, PA - contact Betty Kauffman, R2, Box 513, Mohnton, PA 19540. GEESMAN-SKINNER 88th annual reunion 22 Jun 1986 Monroe, MI. Historian Thelda M. Ralston, 5948 S. Custer, Monroe, MI 48161 Queries 4. Not numbered.

THE EPISTLE, Vol XII, No. 5, July 1986, Bi-monthly magazine for the BATCHELDER, CARPENTER and RICE Families, Rosemary E. Bachelor Ed. P.O. Box 398, Machias, ME 04654, \$15 per year. Article, Was MARY (BAILEY) BEADLE BACHILER TURNER the MODEL FOR HESTER PRYNNE of HAWTHORNE'S "SCARLET LETTER": article reprinted from January, 1980 ed. of THE STAPLES FAMILY HISTORY ASSOCIATION NEWSLETTER, pp 11-13 with permission of James Staples, SFHA, 1570 Waterwich Dr., Orlando, FL 32806. p. 10 Article on Nathaniel Hawthorne (1804-1864), childhood, famous friends, m. Siphia Amelia Peabody 1842, lived in Old Manse, Concord, Mass., move to Salem and job as surveyor for Custom House., Masterpiece "The Scarlet Letter", son Julian. Illus. Old Manse, home "Wayside", Concord, and House of Seven Gables. CARPENTER - The Steuben Co., Indiana, Carpenter Family RICE - Caleb Rice, Pioneer Insurance Executive, First Mayor of Springfield, Mass. (1792-1893)

MORE KEYSTONE FAMILIES INFORMATION -NEWSPAPER GEN.COLUMN DIRECTORY

In **NEWSPAPER GENEALOGICAL COLUMN DIRECTORY**, 2d ed, revised & expanded, Anita Cheek Milner, Heritage Books, Inc. 1985 p. 41 appears:
PENNSYLVANIA LEBANON COUNTY (1) OUR KEYSTONE FAMILIES by Schuyler C. Brossman, Box 43, Rehrersburg, PA 19950, (2) Lebanon, Dauphin, Berks, Lancaster, Schuylkill, York, Northumberland, Juniata, Perry, Cumberland counties. (3) "Lebanon News" (Lebanon County), Lebanon, PA. "Press" and "Journal: (Dauphin County), Middletown, PA (4) Weekly, (5) 1966. (6) Query must have a Pennsylvania connection, include at least one date and not over 150 words. (7) Free, as space permits. Subscribers' queries are run first. (8) Columns are at PA State Library, Harrisburg, PA The full set of columns has been photocopied and indexed and is at the Fort Wayne, IND. Library; Columns also at Millersville State College, Millersville, PA.; also, So. Central PA Gen. Society, c/o York Co. Historical Soc., York, PA has made an every name index. (9) Historical map of Berks Co. by George Meiser, IX is \$1.75 and shows about 800 historical sites. An earlier issue of NGC Directory explains the numbers used as: 1) By-line and Address 2) Research area (counties covered) 3) Papers in which column appears 4) Frequency 5) Date column first published 6) Requirements for a query 7) Charge for query 8) Availability of back issues, indexes 9) Publications sold by columnist re interest area 10) Other info.

Contents of Columns 1033, July 30, 1986, 1034 Aug 6 1986

Interim columns and earlier ones available to SBOGS Library

1033 **MORE VIRGINIA LAND ABSTRACTS** Vol. III rec'd :Abstracts of VA'S Northern Neck Warrants & Surveys - Dunmore, Shenandoah, Culpeper, Prince William, Fauquier & Stafford Cos.- 1710 to 1780" Pub. 1986, 217 pp. soft cover, perfect binding, price \$25, including postage & handling. Send orders to compiler, Peggy Shomo Joyner, 5008 Dogwood Trail, Portsmouth, VA 23703. Book tells of some of work of first U.S. Pres. George Washington as a surveyor. 1718 abstracts. Vol. II (Frederick) had 1523 abstracts. Abstracts of remaining records of Northern Neck will be pub. in Vol IV, probably by 1987 and will include Hampshire, Berkeley, Loudoun, Fairfax, King George, Westmoreland, Richmond, Northumberland and Lancaster Co., as well as surveyor, Guy Broadwater's "Field Notes"; also will have place index to all 4 volumes. Rec. **CRAWFORD COUNTY, OHIO, MARRIAGE CONSENTS** from Crawford Co. Chapter of OHIO GEN SOC, lists brides under 18 and Grooms under 21 from 1832-1838 where consent given by parents, 62 pp. 672 consents. Also **NATURALIZATION RECORD ABSTRACTS FROM VOL. ONE, PROBATE COURT**, Jan. 1860-Sept 1884, 13 pp. alphabetical order, about 455 abstracts. Price stated at 50¢ plus large 4 1/4" x 9 1/2" envelope, if ordered separately. Column suggests sending \$1.00 Contact Society re copies not Probate Court; requests corrections if errors found. Handwriting difficult to read. Order from Mary L. Fox 931 Marion Rd. Bucyrus, OH 44820. Column also has 4 Reunion Notices. No Queries.

1034 Info re **GENERAL SOCIETY OF COLONIAL WARS**, 840 Woodbine Ave. Glendale OH 45264, membership 4,200 1980; active societies 29 states. Ancestor lists great source of info re male ancestors before Revolution. **WOLF-WOLFE-WOLFFE FAMILY OF BERKS & LEBANON COS., PA** Ray Wolf, Wolf Family Tree Assn 18 West 55th St., New York, NY 10019 trying to find all Wolfs, past and present in U.S. Details on 7 sought. 3 Reunions; Correction. Matilda (not Martha) Hettinger g-grandmother of Col. 1028 Franklin Lupton, 4776 Jason Dr. Ft Wayne, IN 46835. Addtl info re Lewis, s/o George Laubscher. Queries- 7, not numbered.

SARA MEGLITSCH, 2107 NW 128th St., Vancouver, WN 98685 organizer of **THE LITTLE WELLS & THEIR CONNECTIONS**, seeking list of people researching **WELLS** and **MADDEN (MADDIN?)** names.

		1913 Oct.- Dec.			Marriage		
Bride or Groom	Age	Residence	(Born)	Groom or Bride	Age	Residence	(Born) Date/Place
BANISTER, Winnifred Louise	28	S. B.	(N. Y.)	George Blankman	36	S. B. (CA)	26 Nov 1913 S. B.
ANNIR, Annir	16	Casmalia (Azores)		Frank GULARTE	24	Santa Maria (CA)	21 Dec S. B.
John Borges, father of bride, consenting							
BROWN, Marten Leon	25	S. B.	(KAN)	Alice Sarah KEOGH	22	S. B. (WISC)	31 Dec S. B.
BUNNER, Clarence Eugene	26	S. B.	(ILL)	Marian Teresa UFFKEN	23	S. B. (CA)	20 Dec S. B.
BUNCE, Charles A.	39	Sta. Maria (CA)		Ava Pearl WIMMER	37	Sta. Maria (CA)	22 Dec S. B.
CARRANZA, Eva Josie	21	Sisquoc (CA)		Henry Eugene DUTCHER	28	Sisquoc (CA)	8 Dec Sta. Maria
CAVALLI, Aurora	18	S. B.	(Italy)	Natalie VARNI	19	S. B. (CA)	28 Nov S. B.
CAVALLI, Constance	19	S. B.	(Italy)	Vittore GHENO	23	S. B. (Italy)	6 Dec S. B.
CECCATO, Francisco	30	Goleta (Italy)		Ester PAULETTO	24	Goleta (Italy)	8 Nov Montecito
CELICIO, Antonio Manuel	21	S. B.	(Mexico)	Felicita GONZALIS	15	S. B. (Mexico)	28 Nov S. B.
Emilio Gonzalis, father of bride, consenting							
CENDEJAS, Ramon	38	S. B.	(Mexico)	Delores VALDES	40	Long Beach	22 Dec S. B.
COLWELL, Jessie Mae	22	S. B.	(ILL)	Robert Bruce MITCHELL	21	S. B. (ILL)	27 Nov S. B.
CORDERO, Jessie	18	Ventura (CA)		James GAUX	22	S. B. (CA)	8 Dec S. B.
Frances Cordero, mother of bride, consenting							
CORDERO, Josephine	25	S. B.	(CA)	Murele COX	24	S. B. (OR)	20 Oct S. B.
COTA, Manuel Julius	28	S. B.	(CA)	Presentation ROBLES	27	Montecito (CA)	26 Nov S. B.
COX, Murele	24	S. B.	(OR)	Josephine CORDERO	25	S. B. (CA)	20 Oct S. B.
DELAINI, Mary	19	S. B.	(Italy)	Enrico PERINI	25	S. B. (Italy)	12 Dec S. B.
DOUGLAS, Roy Cornelious	24	S. B.	(ILL)	Alice STUWESKA	23	S. B. (Poland)	25 Dec S. B.
DUTCHER, Henry Eugene	28	Sisquoc (CA)		Eva Josie CARRANZA	21	Sisquoc (CA)	8 Dec S. Maria
FIELD, George Blankman	36	S. B.	(CA)	Winnifred Louise BANISTER	28	S. B. (N.Y.)	26 Nov S. B.
FLORES, Leo	26	S. B.	(CA)	Soladad M. RUIZ	27	S. B. (CA)	16 Nov S. B.
GARCIA, Camillo	23	Sta. Maria (CA)		Stella SOTTO	21	Sta. Maria (CA)	18 Dec S. Maria
GARCIA, Thomas	42	Sta. Maria (CA)		Maria Jesus MOSS	42	Sta. Maria (CA)	18 Dec S. Maria
GAUX, James	22	S. B.	(CA)	Jessie CORDERO	18	Ventura (CA)	8 Dec S. B.
GHENO, Vittore	23	S. B.	(Italy)	Constance CAVALLI	19	S. B. (Italy)	6 Dec S. B.
GILBERT, Mary Ann	23	Buckner, Jackson Co., MD	(MD)	Thomas Winslow HUDSPETH	38	Sacramento (MD)	3 Dec S. B.
GLEASON, Lu'na Edna	26	S. B.	(MA)	George Roland HEWES	27	S. B. (CA)	15 Nov S. B.
GONZALIS, Felicita	15	S. B.	(Mexico)	Antonio Manuel CELICIO	21	S. B. (Mexico)	28 Nov S. B.
GULARTE, Frank	24	Sta. Maria (Azores)		Annir BORGES	16	Casmalia (CA)	21 Dec S. B.
John Borges, father of bride, consenting							
GUNNINGHAM, Owen Howard	28	Greeley, Anderson co. Kans.	(KA)	Ida Grace McNEIL	27	S. B. (IND)	20 Nov S. B.

Bride or Groom	1913 Oct - Dec			Marriage		
	Age	Residence (Born)	Groom or Bride	Age	Residence (Born)	Date/Place
HERRINGTON, Claude H.	25	San Francisco (TEX)	Maria STOVALL	16	Sta. Maria (CA)	1913 8 Dec S. B.
Mary Whitaker, mother of bride, consenting						
HEWES, George Roland	27	S. B. (CA)	Lulu Edna GLEASON	26	S. B. (MA)	15 Nov S. B.
HUDSPETH, Thomas Winslow	32	Sacramento (MO)	Mary Ann GILBERT, 23, Buckner, Jackson Co. Mo. (MO)			3 Dec S. B.
JAMES, Harold Levis	29	S. B. (CA)	Mabel May LEWIS	24	S. B. (NEB)	27 Nov S. B.
JANSSSENS, Marie Antoinette	24	S. B. (CA)	Arthur W. O'CONNOR	23	Los Angeles (WA)	20 Dec S. B.
KEOGH, Alice Sarah	22	S. B. (Wisc.)	Marten Leon BROWN	25	S. B. (Kansas)	31 Dec S. B.
LANE, William Walter	36	Los Angeles (ILL)	Marie Elizabeth PEYRAM	29	Long Beach (OH)	28 Mpv S. B.
LEWIS, Mabel May	24	S. B. (NEB)	Harold Levis JAMES	29	S. B. (CA)	27 Mpv S. B.
LIBBEY, Dede Alide	22	S. B. (CA)	Frank PEPPER	44	Sta. Rosa Island (CA)	27 Nov S. B.
LIBBY, Clarence Joseph	40	S. B. (CA)	Mary Alice MALONE	17	S. B. (COLO)	23 Nov S. B.
Ada Russell, mother of bride, consenting						
LOGIE, Samuel Jamison	64	Long Beach (Canada)	Amelia Seabrook O'ERIEEN	64	Long Beach, LA co (CAN)	10 Dec S. B.
LORTON, John	22	Lompoc (CA)	Mary OLIVERA	21	Lompoc (CA)	21 Nov Lompoc
McNEIL, Ida Grace	27	S. B. (IND)	Owen Howard GUNNINGHAM	28	Grealey, Adderson Co. KA (KA)	20 Nov S. B.
MALONE, Mary Alice	17	S. B. (COLD)	Clarence Joseph LIBBY	40	S. B. (CA)	23 Nov S. B.
MERRIMAN, Mary Augusta	23	S. B. (ILL)	James Roderick THOMPSON	32	S. B. (Wash. State)	25 Oct S. B.
MITCHELL, Frank Edward	31	S. B. (N.Y.)	Ethel Bell VAN NATTS ^{of Van Natta}	31	S. B. (ORE)	24 Nov S. B.
MITCHELL, Robert Bruce	21	S. B. (ILL)	Jessie Mae COLWELL	22	S. B. (ILL)	27 Nov S. B.
MOSS, Maria de JESUS	42	Sta. Maria (CA)	Thomas Gavino GARCIA	42	Sta. Maria (CA)	18 Dec Sta. Maria
O'ERIEEN, Amelia Seabrook	64	Long Beach, LA co. (CAN)	Samuel Jamison LOGIE	64	Long Beach LA co (CAN)	10 Dec S. B.
O'CONNOR, Arthur W.	23	Los Angeles (WASH)	Marie Antoinette JANSSSENS	24	S. B. (CA)	20 Dec S. B.
OLIVERA, Mary	21	Lompoc (CA)	John LORTON	22	Lompoc (CA)	21 Nov Lompoc
PAULETTO, Esther	24	Goleta (Italy)	Francisco CECCATO	30	Goleta (Italy)	8 Nov Montecito
PEPPER, Frank 44		Santa Rosa Island (CA)	Dede Alide LIBBEY	22	S. B. (CA)	27 Nov S. B.
PERINI, Enrico	25	S. B. (Italy)	Mary DELAINI	19	S. B. (Italy)	12 Dec S. B.
PEYRAM, Marie Elizabeth	29	Long Beach (OH)	William Walter LANE	36	Los Angeles (ILL)	27 Mpv S. B.
RIPLEY, Frank Leroy	28	S. B. (NEB)	Mary Bell VANCE	27	S. B. (CA)	27 Nov S. B.
ROBLES, Presentation	27	Montecito (CA)	Manuel Julius COTA	28	S. B. (CA)	26 Nov S. B.
RODRIGUEZ, Carmelita Josephine	33	S. B. (CA)	Jose Ramon RODRIGUEZ	46	Carpinteria (CA)	16 Nov S. B.
RODRIGUEZ, Jose Ramon	46	Carpinteria (CA)	Carmelita Josephine RODRIGUEZ	33	S. B. (CA)	16 Nov S. B.
RUIZ, Soladad M.	27	S. B. (CA)	Leo FLORES	26	S. B. (CA)	16 Nov S. B.
SCHULER, Isabelle Cyril	24	S. B. (N.DAK)	Raymond SPENCER	28	S. B. (CA)	20 Nov S. B.
SOTTO, Stella	21	Sta. Maria (CA)	Camillo GARCIA	23	Sta. Maria (CA)	18 Dec Sta. Maria

Bride or Groom	Age	Residence	(Born)	1913- Oct-Dec.			Marriage		
				Groom or Bride	Age	Residence	(Born)	Date/Place	1913
SPENCER, Raymond	28	S. B.	(CA)	Isabelle Cyril SCHULER	24	S. B.	(N.DAK)	20 Nov	S. B.
STOVALL, Marta	16	Sta. Maria	(CA)	Claude H. HERRINGTON	25	San Francisco	(TEX)	8 Dec	S. B.
STUVESKA, Alice	23	S. B. (Poland)		Roy Corneilous DOUGLAS	24	S. B.	(ILL)	25 Dec	S. B.
THOMPSON, James Roderick	32	S. B. (Wash.State)		Mary Augusta MERRIMAN	23	S.B.	(ILL)	25 Oct	S. B.
UFFREN, Marian Teresa	23	S. B. (CA)		Clarence Eugene BRUNER	26	S. B.	(ILL)	20 Dec	S. B.
VALDES, Delores	40	Long.Beach(not given)		Ramon CENDEJAS	38	S. B.	(Mexico)	22 Dec	S. B.
VANCE, Mary Bell	27	S. B. (CA)		Frank Leroy RIPLEY	28	S. B.	(NEB)	27 Nov	S. B.
VANNATTS (Van Natta?), Ethel Bell	31	S. B. (OR)		Frank Edward MITCHELL	31	S. B.	(N.Y.)	24 Nov	S. B.
VARNI, Natale	19	S. B.	(CA)	Aurora CAVALLI	18	S. B.	(Italy)	29 Mpv	S. B.
WILKINSON, Jane	20	SanLuisObispo	(CA)	William Alison WRIGHT	27	Lompoc	(CA)	27 Nov	Lompoc
WIMMER, Ava Pearl	31	Sta.Maria	(CA)	Charles A. BUNCE	39	Sta.Maria	(CA)	27 Dec	S. B.
WRIGHT, William Alison	27	Lompoc	(CA)	Jane WILKINSON	20	SLO	(CA)	27 Nov	Lompoc

Volunteers are needed to abstract and transcribe marriage records. Microfilm reader at the County Recorder's office is available, subject to other searcher use, between 10:30 a.m. and 4 p.m. on Tuesdays, Wednesdays and Thursdays.

These records have never appeared in print elsewhere. Consider a project to put them in book form. Arlene Doty's compilation of many early ANCESTORS WEST listings is in the SBOGS Library and should be continued.

Please let us have your comments and suggestions.

ANCESTORS WEST - SANTA BARBARA COUNTY MARRIAGE RECORDS

Year of A. W. Marriage Year		Vol. No.		Page		Number of Marriages		Comments
1850	Dec 1974	1	1	14	14			By grooms' names only
1851				15	22			" " " "
						3		Santa Ynez Mission Indians
1852	Spring 1975	1	2	15	10			By grooms' names only
1852				38	3			" " " "
1853				38	1			" " " "
1854				39	41			" " " "
1854	Summer 1975	1	3	73	26			" " " "
				74	16			" " " "
1855	Fall 1975	1	4	110	25			" " " "
1856	Winter 1975	1	5	8	1			" " " "
	" 1975-76	1	5	9	25			" " " "
1857	Spring 1976	2	1	40	2			" " " "
1858				40	3			" " " "
	Sept 1977	3	3	15	13			" " " "
1859		2	2	14	20			" " " "
1862	Spring 1976	3	3	40	12			" " " "
				41	3			" " " "
1863	Summer 1976	2		71	30			" " " "
1864	March 1977	3	1	12	14			" " " "
1865				12	19			" " " "
				13	4			" " " "
1866				13	15			" " " "
1867				13	23			" " " "
1868	June 1977	3	2	32	7			" " " "
1869				7	5			" " " "
				8	52			" " " "
1870	Sept 1977	3	3	14	52			" " " "
				15	12			" " " "
1871	Dec 1977	3	4	10	18			" " " "
				11	21			" " " "
1872	March 1978	4	1	10	items 53			listed under both bride & groom
				11	" 37			" " " "
	June 1978	4	2	40-41	" 8			" " " "
1873				40-42	" 120			" " " "
1874	Sept 1978	4	3	78-79	" 94			" " " "
1875	Dec 1978	4	4	115-116	" 120			" " " "
1876	Mar 1979	5	1	20-22	" 135			" " " "
				21-22	3			marriages omitted (94 marriages)
1877	June 1979	5	2	42-44	112			(56 marriages)
1878	March 1980	6	1	7 - 9	items 125			(63 marriages)
					1			Omitted TILLMAN, J.P. Margaret BRANIGAN 4 Apr Lompoc

Brides Lists

1859	March 1980	6	1	34	8			Grooms listed in Vol 3 No. 3 p.15
	June 1980	6	2	64	15			" " 3:3:15
1862		6	2	64	15			" " 2:1:40-41
1863				64-65	32			" " 2:2:71
1864				65	14			" " 3:1:12
1865				65	25			" " 3:1:12
1866				65-66	16			" " 3:3:13
1867				66	23			" " 3:1:13
1868				66-67	34			" " 3:2:7
1869				67	42			" " 3:2:7-8
				68	15			" " 3:2:8
1870				68	38			" " 3:3 14-15
				69	26			" " 3:3:14-15
1871				69-70	49			" " 3:4 10-11

ANCESTORS WEST - SANTA BARBARA COUNTY MARRIAGE RECORDS

TABULATION, continued

Year of Marriage	A. W. Year	Vol.	No.	Page	Number Marriages	Comments
1879	March 1980	6	1	9-11	63	(126 items)
1880	June 1980	6	2	43-44	87	items
		6	2	48	56	25 " total 112
1881	Sept. 1980	6	3	77-80	93	186 items
1882		6	3	80-82	74	148 items
1883	Dec 1980	6	4	136-138	76	152 "
1884		6	4	138-141	68	136 "
	June 1980	6	2	70	1	Misc. entries -note
	Dec 1977	3	4	11	1	Declns of Marriage ,Brides
1885	June 1980	6	2	70	1	entry in Vol 3:4:11'-See note there re Declarations
1886	June 1981	7	2	64-66	84	
1887		7	2	66-69		181 items (90/91 marriages)
1888	3 early reels at			Co. Record's office		to be checked/transcribed
1889	March 1981	7	1	27-29	94	
1890	Sept 1981	7	3	85-88	113	
1891		7	3	88-92	157	
	June 1980	6	2	70	1	Decln of Marriage
1892		6	2	70	2	" " "
	Dec 1981	7	4	122-126		281 items(190/191 marriages)
1893		7	4	126-130		259 items(129/130 ")
	June 1980	6	2	70	1	Declaration of Marriage
1894		6	2	70	6	" " "
	March 1982	8	1	21-24	116	
1895	June 1982	8	2	62-66	154	
	June 1980	6	2		1	Declaration of Marriage
1896	Sept 1982	8	3	129-144	174	319 items (154/155 marriages)
1897	Dec 1982	8	4			/ for year 1897
1898	March 1983	9	1	25-28		253 items(126/127 marriages)
1899	June 1983	9	2	49-52		257 " (129/130 marriages)
	INDEX Vol	8	1	25-31		Index to Marriage Records in
				Vol. 6, 7 pages		- double columns
		8	3	97-11		Index to Marriage Records in
				Vol. 7 14 pages		- double columns
1900	June 1983	9	2	52-56		135 marriages
	March 1984	10	1	26		Smith/Bailey 18 June 1900
1901	Sept 1983	9	3	99-103		287 items (143/144 marriages)
1902	Dec 1983	9	4	142-148		149 marriages
1903	Dec 1983	9	4	148-151		257 items (123/124 marriages)
1904	March 1984	10	1	26-34		214 marriages
	no year shown	10	1	26		probably 1904 marriages Garrett-Gott; Mansfield- Gilkeson
	out of state;Newport R.I			p. 26		Stewart Edward White-Elizabeth Calvert Grant
1905	June 1984	10	2	57-66		261 marriages
		10	2	67		9 previous names of brides
1906		10	2	68-76		232 marriages
			2	67		25 previous names of brides
		10	2	67		12 addtl marriages-recorded 1907 and 1 addtl previous name,bride
1907	Sept. 1984	10	3	88-97		275 marriages
1908	Dec 1984	10	4	126-133		221 marriages
1909	Dec 1984	10	4	134-141		867 items(433/444 marriages)
1910	March 1985	11	1	22-38		243 marriages
1911	June 1985	11	2	63-79		287 "
1912	Sept 1985	11	3	114-122		137 marriages thru June (275 items)

SANTA BARBARA COUNTY MARRIAGE RECORDS - 1914 Jan 1-Mar 7

Copied from Microfilm by Doris Crawford

BRIDE/GROOM	AGE	RESIDENCE	(BORN)	MARRIAGE DATE/PLACE
APALATGUI, Frank	24	S. B.	(Spain)	1 Feb S. B.
Margaret MUNRO	23	S. B.	(France)	
ARATA, Aurelia	31	S. B.	(CA)	1 Mar S. B.
Robert Price HESTON	32	S. B.	(KY)	
BALES, Willie Maurice	28	Los Alamos	(MO)	14 Feb S. B.
Effie Elizabeth COX	19	Los Alamos	(CA)	
BARINDELIJ, Antonio	28	Lompoc	(Italy)	8 Feb S. B.
Marie VIGLIENGI	20	Lompoc	(Italy)	
BISBEE, Carl Milton	23	S. B.	(NEB)	20 Jan S. B.
Ruby Barbara MARSH	21	S. B.	(CA)	
BRECKENRIDGE, Paul Spencer	29	Santa Maria	(OH)	2 Feb Sta. Maria
Nora Margaret DONOVAN	22	Santa Maria	(MA)	
BRYSON, Robert	26	S. B.	(WASH)	5 Feb S. B.
Lilla CHAPMAN	30	S. B.	(CA)	
EUCHANAN, Bertha	17	Santa Maria	(PA)	7 Feb Sta. Maria
Harry M. THORNEBURGH	22	Santa Maria	(CA)	
William M. Buchanan, father of bride, consenting				
BURDIS, Margaret Mary	28	ShingleSprings, ELDorado Co.	(CA)	1 Mar
John Bernard HUGHES	29	Comino, ELDorado Co.	(ILL)	S. B.
COLES, Harry E.	25	Los Alamos	(PA)	1 Jan Los Alamos
Lillian SAULSEBURY	16	Los Alamos	(CA)	
Rettie Moore, mother of bride, consenting				
COOK, Leo William	31	S. B.	(NY)	10 Jan S. B.
Elizabeth Veronica MURPHY	31	S. B.	(Scotland)	
CORDERO, Leopoldo	21	S. B.	(CA)	7 Mar S. B.
Esperanza RUIZ	17	S. B.	(CA)	
Ernestine RUIZ, mother of bride, consenting				
COX, Effie Elizabeth	19	Los Alamos	(CA)	14 Feb S. B.
Willie Maurice BALES	28	Los Alamos	(MO)	
DAGNEAUX, Marcel Leon	23	S. B.	(France)	12 Jan S. B.
Bertron Alice DUPUY	32	S. B.	(CA)	
dela GUERRA, Jose Antonio	18	Santa Inez	(CA)	5 Jan Santa Ines
Mary SMITH	16	Santa Inez	(CA)	Mission
Consents of W.C. Gammill, guardian of groom, Ellen Smith, mother of bride				
DIAS, Isabel Concepcion	25	S. B.	(Portugal)	8 Feb S. B.
Manuel Joaquin LARANGO	25	S. B.		
BRECKENRIDGE, Paul Spencer	29	Santa Maria	(OH)	2 Feb Sta. Maria
Nora Margaret DONOVAN	22	Santa Maria	(MA)	
DONDRE, Benjamin Gratton	27	Santa Paula, CA	(VA)	7 Mar S. B.
Virginia NICELY	27	Santa Paula, CA	(CA)	
DUPUY, Bertron Alice	32	S. B.	(CA)	12 Jan S. B.
Marcel Leon DAGNEAUX	23	S. B.	(France)	
GARCIA, William	22	Santa Maria	(CA)	7 Jan Sta. Maria
Mary VILLA	18	Santa Maria	(Mexico)	
HAMMACK, Melville Carson	27	Portland, Multnomah Co.	(OR)(CA)	28 Feb S. B.
Mabelle Marie HART	30	Portland, Oregon	(MICH)	
HAMPTON, Mabel Lee	19	S. B.	(NG)	17 Jan S. B.
Laurence Anthony STAPLES	19	S. B.	(CA)	
Lola Staples, mother of groom, consenting				
HANSEN, Amelia V.	22	Lompoc	(IOWA)	1 Jan Lompoc
William Oscar McGREEN	23	Lompoc	(ILL)	
HANSEN Dora Ann	18	Santa Maria	(CA)	3 Jan Sta. Maria
Clarence Charles THOMPSON	28	Sta. Maria	(CA)	
HART, Mabelle Marie	30	Portland, Oregon	(MICH)	28 Feb S. B.
Melville Carson HAMMACK	27	Portland, Oregon	(CA)	

SANTA BARBARA COUNTY MARRIAGE RECORDS - 1914 Jan 1-Mar 7

BRIDE/GROOM	AGE	RESIDENCE	MARRIAGE		
			(BORN)	DATE/PLACE	
HERMAN, James Andrew	26	Alberta, Canada	(MO)	26 Feb	S. B.
Violet STEWART	27	S. B.	(MO)		
HESTON, Robert Price	22	S. B.	(KY)	1 Mar	S. B.
Aurelia ARATA	31	S. B.	(CA)		
HOLLISTER, Albert Guy	31	Lompoc	(CA)	12 Jan	S. B.
Esther Elvira WELLS	18	Lompoc	(CA)	no year shown but	
marriage was recorded by Rev. Warren D. More, Presbyterian Church					
Feb. 2, 1914					
HUGHES, John Barnard	29	Camino, Eldorado Co. (ILL)		1 Mar	S. B.
Margaret Mary BURDIS	28	Shingle Springs, Eldorado Co. (CA)			
JAMISON, Ethel Mary	19	Carpinteria	(CA)	21 Jan	S. B.
Frank Augustus SANSOME	22	S. B.	(CA)		
JOHANSON, Nell	24	S. B.	(NEB)	25 Feb	S. B.
JAY MARCY	36	Hot Springs, Sheridan Co., Neb	(IOWA)		
KIERMAN, Madge	28	Santa Maria	(CA)	8 Jan	Sta. Maria
Moses Alexander MORRISON	52	Fowler, Fresno Co., CA	(GA)		
LAIR, Fannie E.	19	Lompoc	(CA)	28 Feb	near Lompoc
William John TERRY	25	Half Moon Bay, San Mateo Co., CA	(CA)		
LARANGO, Manuel Joaquin	25	S. B.	(Portugal)	8 Feb	S. B.
Isabel Concepcion DIAS	25	S. B.	(Portugal)		
LORI, Joseph Frederick	25	S. B.	(CA)	19 Feb	S. B.
Nellie Emma MORENO	24	S. B.	(CA)		
McCOY, Maud May	27	Los Angeles	(Mexico)	12 Jan	S. B.
Charles Edward O'HARA	32	San Francisco	(CA)		
McGREW, William Oscar	23	Lompoc	(ILL)	1 Jan	Lompoc
Amelia V. HANSEN	22	Lompoc	(IOWA)		
MAIRANI, Maria	19	Oxnard, CA	(Italy)	10 Feb	S. B.
James MASTAGNI	26	Goleta	(Italy)		
MANN, Matthew Derbyshire	29	S. B.	(NY)	7 Feb	S. B.
Barbara Caroline STEVENS	25	S. B.	(CA)		
MARCY, Homer Andrew	40	San Diego, CA	(MA)	2 Mar	S. B.
Gertrude Cordell SAMPSELL	36	San Diego, CA	(IOWA)		
MARCY, Jay	36	Hot Springs, Sheridan Co., Neb.	(IOWA)	25 Feb	S. B.
Nell JOHANSEN	24	S. B.	(NEB)		
MARSH, Ruby Barbara	21	S. B.	(CA)	20 Jan	S. B.
Carl Milton BISBEE	23	S. B.			
MASTAGNI, James	26	Goleta	(Italy)	10 Feb	S. B.
Marie MAIRANI	19	Oxnard, CA	(Italy)		
MILLER, Agnes Dorothy	19	S. B.	(TEX)	1 Jan	S. B.
Milo Anthony OLIVERA	22	S. B.	(CA)		
MONK, Lloyd William	23	S. B.	(Canada)	18 Jan	S. B.
Jennie Elizabeth NARDI	19	S. B.	(CA)		
MOREHOUSE, Charles Lester, Jr.	23	Goleta	(ILL)	5 Feb	S. B.
Ida Augusta ROGERS	23	Goleta	(IOWA)		

SANTA BARBARA COUNTY MARRIAGE RECORDS - 1914 Jan 1-Mar 7

BRIDE/GROOM	AGE	RESIDENCE	(BORN)	DATE/PLACE	MARRIAGE
MORENO, Nellie Emma	24	S. B.	(CA)	19 Feb	S. B.
Joseph Frederick LORI	25	S. B.	(CA)		
MORRISON, Moses Alexander	52	Fowler, Fresno Co.	CA (GA)	8 Jan	Sta. Maria
Madge KIERNAN	28	Santa Maria	(CA)		
MUNRO, Margaret	23	S. B.	(France)	1 Feb	S. B.
Frank APALETGUI	24	S. B.	(Spain)		
MURPHY, Elizabeth Veronica	31	S. B.	(Scotland)	10 Jan	S. B.
Leo William COOK	31	S. B.	(NY)		
NARDI, Jennie Elizabeth	19	S. B.	(CA)	18 Jan	S.-B.
Lloyd Williams MONK	23	S. B.	(Canada)		
NEIRNS, Frank Cleveland	25	S. B.	(ILL.)	9 Jan	Solvang
Matilda OVERGARD	21	Solvang	(NEB)		
NICELY, Virginia	27	Santa Paula, CA	(CA)	7 Mar	S. B.
Benjamin Gratton DUNDORE	27	Santa Paula, Ventura Co.,	CA (VA)		
NOETH, Josephine G.	29	Santa-Maria	(MO)	3 Mar	Sta. Maria
Joseph J. SPRIGGS	42	Santa Maria	(WISC)		
O'HARA, Charles Edward	32	San Francisco CA	(CA)	12 Jan	S. B.
Maud May MCCOY	27	Los Angeles	(MO)		
OLIVERA, Milo Anthony	22	S. B.	(CA)	1 Jan	S. B.
Agnes Dorothy MILLER	19	S. B.	(TEK)		
OVERGARD, Matilda	21	Solvang	(NEB)	9 Jan	Solvang
Frank Cleveland NEIRNS	25	S. B.	(ILL.)		
POND, Flavious Lamoine	21	Los Angeles	(OH)	20 Jan	S. B.
Susie Ellen READ	20	S. B.	(CA)		
READ, Susie Ellen	20	S. B.	(CA)	20 Jan	S. B.
Flavious Lamoine POND	21	Los Angeles	(OH)		
REAM, Charles Edmund	37	Douglas, Cochise Co.	AR (OH)	11 Feb	S. B.
Verlie Winifred TEACHEOUT	25	S. B.	(KAN)		
ROGERS, Ida Augusta	23	Goleta	(IOWA)	5 Feb	S. B.
Charles Lester MOREHOUSE, Jr.	23	Goleta	(ILL.)		
RUIZ, Esperanza	17	S. B.	(CA)	7 Mar	S. B.
Leopoldo CORDERO	21	S. B.	(CA)		
Ernestine Ruiz, mother of bride, consenting					
SAMPELL, Gertrude Cordell	36	San Diego, CA	(IOWA)	2 Mar	S. B.
Homer Andrew MARCY	40	San Diego, CA	(MA)		
SANSOME, Frank Augustus	22	S. B.	(CA)	21 Jan	S. B.
Ethel Mary JAMISON	19	Carpinteria	(CA)		
SAULSBURY, Lillian	16	Los Alamos	(CA)	1 Jan	Los Alamos
Harry E. COLES	25	Los Alamos	(PA)		
Rettie Moore, mother of bride, consenting					
SCHULD, Roman John	24	S. B.	(WISC)	1 Feb	S. B.
Alta TOWNE	20	S. B.	(CA)		
SENICH, Alice Elizabeth	22	S. B.	(CA)	25 Jan	S. B.
Girard Owen SEYMOUR	25	S. B.	(CT)		
SEYMOUR, Girard Owen	25	S. B.	(CT)	25 Jan	S. B.
Alice Elizabeth SENICH	22	S. B.	(CA)		
SMITH, Mary	16	Santa Ynez	(CA)	5 Jan	Sta. Ines
Jose Antonio de la GUERRA	18	Santa Ynez	(CA)		Mission
Consents of W.C. Gammill, gdn of groom and Ellen Smith, mother of bride					
SPRIGGS, Joseph J.	42	Santa Maria	(WISC)	3 Mar	Sta. Maria
Josephine B. NOETH	29	Santa Maria	(MO)		

SANTA BARBARA COUNTY MARRIAGE RECORDS - 1914

January 1 - March 7

BRIDE/GROOM	AGE	RESIDENCE	MARRIAGE			
			(BORN)	DATE/PLACE		
STAPLES, Laurence Anthony	19	S. B.	(CA)	17 Jan	S. B.	
Mabel Lee HAMPION	19	S. B.	(NC)			
STEVENS, Barbara Caroline	25	S. B.	(CA)	7 Feb	S. B.	
Matthew Derbyshire MANN	29	S. B.	(NY)			
STEWART, Violet	27	S. B.	(MO)	26 Feb	S. B.	
James Andrew HERMAN	26	Alberta, Canada	(MO)			
TEACHOUT, Verlie Winifred	25	S. B.	(KN)	11 Feb	S. B.	
Charles Edmund REAM	37	Douglas, Cochise Co., AR	(OH)		near	
TERRY, William John	25	Half Moon Bay, San Mateo Co., CA	(CA)	28 Feb	Lompoc	
Fannie E. LAIR	19	Lompoc	(CA)			
THOMPSON, Clarence Charles	28	Santa Maria	(CA)	3 Jan	Sta. Maria	
Dora Ann HANSEN	18	Santa Maria	(CA)			
THORNBURGH, Harry M.	22	Santa Maria	(CA)	7 Feb	Sta. Maria	
Bertha A. BUCHANAN	17	Santa Maria	(CA)			
William M. Buchanan, father of bride, consenting						
TOWNE, Alta	20	S. B.	(CA)	1 Feb	S. B.	
Roman John SCHULD	24	S. B.	(WISC)			
VIGLIENGI, Maria	20	Lompoc	(Italy)	8 Feb	S. B.	
Antonio BARINDELLI	26	Lompoc	(Italy)			
VILLA, Mary	18	Santa Maria	(Mexico)	7 Jan	Sta. Maria	
William GARCIA	22	Santa Maria	(CA)			
WELLS, Esther Elvira	18	Lompoc	(CA)	12 Jan	S. B.	
Albert Guy HOLLISTER	31	Lompoc	(CA)	no year given on record but recorded 2 Feb 1914 by Rev. Warren D. More, Pastor, Presbyterian Church		

NOTE: The format of the 1914 tabulation was altered due to the fact that the computer program used would not print-out the horizontal tabulation used for 1913 and some earlier years. Carol Kosai computerized the PROFILES and some QUERIES and it is our hope to be able to produce an index to the text and the marriage records - possibly with the marriages in a separate supplemental pamphlet - at least by 1987

COMMENTS ARE SOLICITED.

The balance of the early entries on 3 reels have not been completed. A member volunteered to do this, but thus far has not delivered anything to the Editor.

Santa Barbara County Marriage Records are now only available on microfilm at the office of the County Clerk/Recorder. More volunteers for copying (abstracting) are urgently needed. Hours are between 10:30 a.m. - 4 p.m. Tuesdays, Wednesdays and Thursdays. Reader is available during those hours unless other researchers appear and wish to use the reader. The records cover the period from 1850 to 1923. Microfiche records for later years supplied by the Dept. of Vital Statistics at Sacramento are available for reference, but not for copying. These are alphabetized or entered chronologically by years. There is no continuous index.

Your Editor prepared a listing through June, 1912, but did not have available pages in earlier issues of ANCESTORS West. The tabulation follows:

EASTERN WASHINGTON GENEALOGICAL SOCIETY

P. O. Box 1826

Spokane, Washington 99210

MEMBERSHIP: \$6. per yr. Couples \$8. Get big 50 page Quarterly "BULLETIN". Includes Northwest data, National and International features. FREE QUERIES to members. Offers to swap for similar equal value: TOMBSTONE INSCRIPTIONS, Stevens County, Washington, \$6.50; Adams and Pend Oreille County, Washington, \$5.00; Lincoln Co., Washington \$6.50; Whitman Co. 3 vols. each \$5.00

* * * * *

SOUTHEAST TEXAS GENEALOGICAL AND HISTORICAL SOCIETY

P. O. Box 3827

Beaumont, TEXAS 77704

Membership \$7.50 per year includes 4 issues - YELLOWED PAGES
Offering: Jefferson Co., Texas Marriages 1837-1899 \$10.50
Hardin County, Texas Cemeteries (272 pp) 15.50
Yellowed Pages, Vols. 1 through V, each \$8.00

* * * * *

SOUTH PACIFIC COUNTY GENEALOGICAL SOCIETY P. O. Box 1024 LONB BEACH, WA 98631

Monthly Publication
CLAN DIGGER

* * * * *

SEATTLE GENEALOGICAL SOCIETY

Box 549, Seattle WA 98111

HOW-TO FLYER to include your pre-1850 New England - New York ancestors in planned 1983 published register. Send SASE to Seattle Genealogical Society P. O. Box 459 Seattle, WA 98111. Up-date. This work is now published and available.

* * * * *

SOUTHEASTERN COLORADO GENEALOGICAL SOCIETY

P. O. Box 4086, Pueblo, CO 81003

Welcome new members. Quarterly issued Spring, Summer, Fall, Winter. FREE QUERY per quarterly. Area covered: The original five counties of southeastern Colorado: now Baca, Bent, Crowley, Custer, Fremont, Huerfano, Kiowa, Otero, Prowers and Pueblo. Membership dues: Individual \$7.00, Family \$10.00, Senior Citizen/Student \$5.00 Organization \$15.00 and Life \$100. One publication per membership.

* * * * *

ROTA-GENE

INTERNATIONAL GENEALOGICAL MAGAZINE Bi-Monthly -- 32 Pages

FREE Queries --- News --- Book Reviews --- Genealogical

TIPS - - - Historical Data- \$15.00/Yr -- Sample \$2.50

Charles D. Townsend

I.F.R. Genealogy, 5721 Antietam Drive

Sarasota, Florida 33581

* * * * *

SANTA BARBARA COUNTY GENEALOGICAL SOCIETY

The first county historical or genealogical society in the United States to become affiliated with the International Federation of Family History Societies; is also a member of the American federation. There is a complete file of ANCESTORS WEST in the Library of Congress and in the Allen County Public Library, Fort Wayne, IND. Also from March 1979 at NEHGS, 101 Newbury St., Boston, Mass.

Still available- Notesheets, Royal Presidio of Santa Barbara

Forms and charts to assist in research projects

VOLUNTEER YOUR SERVICES AND MAKE SUGGESTIONS.



SANTA BARBARA COUNTY

One of California's 27 original counties. While the county was actually created in 1850, the history of the area dates back to 1542. In that year Juan Cabrillo discovered the Santa Barbara Channel and later, according to legend crossed to San Miguel Island, where he died and was buried. A second Spanish explorer, Sebastian Vizcaino, entered the channel on the Feast Day of Saint Barbara in 1602 and named the area accordingly. Fr. Junipero Serra founded the Santa Barbara mission in 1786. Santa Barbara Royal Presidio, established April 21, 1782, was the last of four royal presidios in Alta California - San Diego, Monterey, San Francisco and Santa Barbara. Santa Barbara had all three Spanish Presidios before the Mexican Revolution. The 1873 Ventura County was established from the southern portion of the original Santa Barbara area.

SANTA BARBARA COUNTY GENEALOGICAL SOCIETY
 P. O. BOX 1303 GOLETA CA 93116-1303
 Return Postage Guaranteed

NON-PROFIT ORG.
 U. S. Postage
 PAID
 Santa Barbara, CA
 Permit No. 682